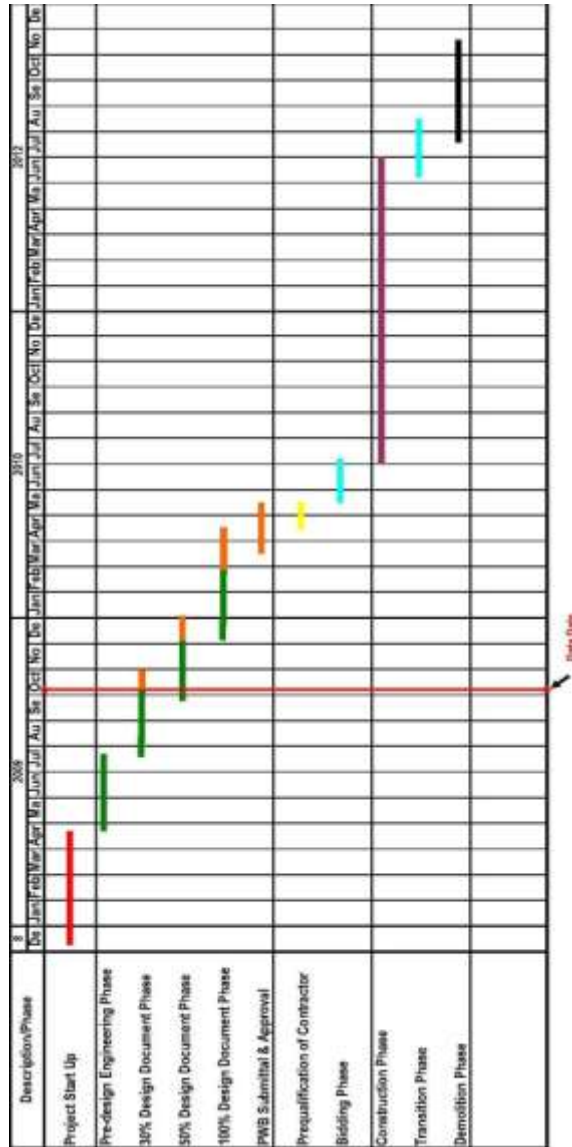


**Project Schedule**



**Project Team:** Art Lytle, Lead Project Manager; Bill Johal, Construction Manager; Ignacio Ramirez, Project Engineer  
**Owner:** County of Calaveras/ **Tenant:** Calaveras County Sheriff’s Department  
**Construction Manager:** Kitchell  
**Architect:** PSA-Dewberry Inc.  
**General Contractor:**  
**Inspector:**  
**Testing and Materials Laboratory:**



**Calaveras County  
 Adult Detention Facility**

**October 2009  
 Issue 8**

**Executive Summary**

PSA-Dewberry has submitted their 30% Design Documents and reviews are to be complete by November 2<sup>nd</sup>, 2009. We have scheduled reviews with the County, Kitchell, Corrections Standards Authority, and California State Fire Marshall.

EDAW/AECOM has completed their delineation report and has advised the County that in their opinion our New Adult Detention Facility can remain in the area originally planned and connected to the Courthouse. We will be presenting the delineation report to the Army Corps of Engineers and asking for their concurrence with EDAW’s findings.

We are scheduling review and coordination meetings with the Administrative Office of the Courts (AOC) to review infrastructure and building connection points. Our next meeting will be the week of November 2<sup>nd</sup>, 2009

**Project Description/Scope**

The project includes the design and construction of a new, fully operational detention facility to house 240 inmates and support services for administration, intake/booking, medical, food service, laundry and staff areas, totaling 87,000-sf. This includes:

- ❑ 80 cells housing 160 beds and support and program facilities for 160 inmates, paid for by AB900 Lease Revenue Bonds. 65,800 square feet.
- ❑ A dormitory housing 80 beds and support program facilities paid for by County bond funds. 21,200 square feet.

In addition to the new Detention Facility, the project includes a new Sheriff’s Administration Building with a 911 Dispatch Center and Emergency Operations Center consisting of approximately 48,000-sf. This site is located directly north of the Animal Services Buildings and adds 57 acres to the existing Government Center, 11.5 acres for the New Adult Detention Facility and 6.5 acres for the New Courthouse.

The site layout will accommodate the present project, as well as a new Superior Court Building to be funded and built by the State of California. It is anticipated that construction of the court facility will be concurrent with that of the Detention Center and Sheriff’s Administration Building.

## Project Progress

Since we kicked off the project in mid



### Project Progress

PSA-Dewberry has submitted their 30% design documents. Reviews are presently under way with Corrections Standards Authority (CSA), State Fire Marshall (CSFM), County Departments and Kitchell the review period will end November 2<sup>nd</sup>, 2009. The County and Kitchell will conduct specialized meetings for life cycle costing, value engineering and cost estimate review and reconciliation. During the review period PSA-Dewberry will continue working and will incorporate comments from the reviewing agencies during 50% Design Documents.

EDAW has completed their delineation report. Our next step is to submit the delineation report to the Army Corp of Engineers (ACE) for their review and acceptance of EDAW's findings. We are looking toward mitigating the wetlands as part of the Nationwide Permit program by contributing to an approved mitigation bank.

The County has directed Kitchell to include the Mountain Ranch Road mitigation improvements as part of the project and has recommended we consider using the drawings prepared by Hawkins & Associates Engineering. We are presently in discussions with Rodrick Hawkins on scope of work and professional fees.

### Project Issues

- Traffic mitigation issues under discussion and reconsideration.
- Tree Mitigation draft report is under review.
- Water Main – PSA-Dewberry is presently laying out the routing and points of connection for the new water main to serve both the New Courthouse and New Adult Detention Facility. The proposed routing will be reviewed with Calaveras Public Utility District (CPUD) for their approval.
- Wetlands Delineation – submit to the Army Corps of Engineers for mitigation of the permanent loss of waters of the US.
- CSA/CDCR Project Approvals – For the New Adult Detention Facility to be a recognized project for submittal to the State Public Works Board the county need to complete the following:
  - “Project Delivery and Construction Agreement” which the state is still preparing.
  - Department of Finance has to complete their review of the County’s paperwork on matching funds.
  - Property Due Diligence – The property boundary survey, records search, unrecorded rights search, and title search is under review. After Kitchell and the County have completed their review the Due Diligence package will be submitted to the California Department of General Services for their review at an anticipated cost of \$30,000 to \$50,000.

### Recent Project Activities

- Continued updating the Project Master Schedule.
- Continued updating Cost Control Report.
- Architect/Engineer continuing design Phase.
- Wetlands delineation report complete.
- A/E completed 30% Design Documents.
- Preliminary project presentations to County Departments, Corrections Standards Authority, State Fire Marshall.
- Masonry costs estimating meeting.
- Medical design review meeting.
- Evidence storage design review meeting.

### Anticipated October Activity

- A/E firm is working on 50% Design Document Phase
- Coordination with AOC.
- Working with CPUD to develop water service to the complex
- Anticipate a presentation to the Board Early November.
- Project review with Corrections Standards Authority and State Fire Marshall.
- Cost estimate reconciliation meeting
- Life cycle costs review meeting.
- Value engineering review meeting.

### Project Schedule

<b>Design Schedule:</b>	April, 2009 to June, 2010
<b>Bidding Schedule:</b>	June, 2010 to July 2010
<b>Construction Schedule to Occupancy:</b>	August, 2010 to September, 2012
<b>Demolition &amp; Site Restoration:</b>	September, 2012 to November 2012

### Project Budget

<b>Original Project Budget:</b>		<b>\$56,954,639.00</b>
AB 900	\$26,387,591.00	
Measure J	\$30,567,049.00	
<b>Encumbered to Date:</b>		<b>\$ 8,866,349.00</b>
AB 900	\$ 0.00	
Measure J	\$ 8,866,349.00	
<b>Balance to Finish:</b>		<b>\$48,088,290.00</b>