

**CALAVERAS COUNTY  
PARKS AND RECREATION TASK FORCE**

---

27 April 2007

Calaveras County Board of Supervisors

Dear Supervisors,

The purpose of this letter is to transmit the Final Report of the Calaveras County Parks and Recreation Task Force for action by the Board of Supervisors. This report was adopted by unanimous vote at its April 16, 2007 meeting.

We wish to thank you for your leadership in establishing the Task Force. By that action, it is obvious that you recognize the pressing problems that our communities are facing with organizational and funding issues for the delivery of parks and recreational facilities and the struggles of county government in resolving those problems.

We all recognize the crisis in providing active recreational facilities to meet the needs of our children, our families, and specialized segments of our population such as seniors and the disabled. The problem is especially acute for our children and teens. The lack of a geographically distributed system of sports facilities for soccer, baseball, softball and other active sports programs is well known.

By moving forward with the recommendations presented in our report, Calaveras County can provide the necessary park services while developing a long term and secure funding basis for the operation and maintenance of these facilities in the future.

It is due to the sacrifice and hard work of volunteers in our Veterans Districts, School Districts, other local districts, and non-profits that the County has any acceptable recreation program to date. The time is overdue for county government to augment these efforts with a focused plan to supplement and help fund their hard work. It is also up to the development community to become a part of the solution as their projects add to the demand for parks and recreation.

The Task Force members are counting on the continued leadership of the Board of Supervisors in overcoming our park funding deficiencies and for the provision of new facilities to meet our future needs.

We look forward to answering your questions at the May 15, 2007 Study Session on this report.

Designated spokesmen for the Task Force,

Mason Goodale  
Pat McGreevy  
Jim Cutler

# CALAVERAS COUNTY PARKS AND RECREATION TASK FORCE

---

April 16, 2007

TO: Calaveras County Board of Supervisors

FROM: Parks and Recreation Task Force

SUBJECT: Final Report

## I. RECOMMENDATIONS AND CONCLUSIONS

More than 25 years ago, a visionary Calaveras County Board of Supervisors enacted an ordinance that reflected the following principle:

*"The Board of Supervisors finds that with the ongoing growth and development of community areas in the county, there is a need to provide a means to acquire, develop and maintain lands for the purposes of public parks and recreation facilities."*<sup>1</sup>

That principle was translated into Goal V-8 of the 1986 county General Plan, where the board committed to:

*"Provide adequate local parks and recreation facilities to serve the county's population."*

We, the Parks and Recreation Task Force, call on the board to affirm that vision, which was memorialized in County Code and General Plan, and to take those actions necessary to fulfill those commitments. Accordingly, the Parks and Recreation Task Force requests and recommends that the Calaveras County Board of Supervisors adopt the attached resolution authorizing the following six actions:

### **1. Modify Calaveras County Code Chapter 16.24 Park and Recreation Facilities, Dedications, Fees**

Modify provisions of *Calaveras County Code Section 16.24.030 Implementation* to empower entities other than a "Parks and Recreation District, formed pursuant to state law."

---

<sup>1</sup> Calaveras County Code Chapter 16.24 Park and Recreation Facilities, Dedications, Fees, Ordinance 1523, 1982.

## **2. Establish Calaveras Parks and Recreation Agency**

Establish an agency to be known as the Calaveras Parks and Recreation Agency (CPRA). CPRA would be a county General Fund Department reporting directly to the Calaveras County Board of Supervisors

## **3. Appoint Parks and Recreation Commission**

Appoint a Parks and Recreation Commission that will assure countywide representation and advocacy while offering advice to the Board of Supervisors, provide guidance to agency staff, and facilitate direct communication with recreation providers.

## **4. Adopt the CPRA Mission Statement**

Adopt the Calaveras Parks and Recreation Agency Mission Statement that provides for immediate and ongoing park and recreation needs while working on a permanent self-sufficient park program (refer to Attachment A). The goal is to establish a financially self-sufficient and independent entity, e.g., special district, within three to five years.

The Mission Statement of the Recreation Agency will include a direction to become financially self-sufficient in three years, and attain Special District status independent of the county Board of Supervisors within five years.

## **5. Create and Fill Recreation Agency Manager Position**

Hire an agency manager who will assume the leadership role in fulfilling the CPRA mission statement. The Recreation Manager shall take policy direction from the Board of Supervisors. The proposed scope of responsibilities and job description for the manager position is presented in Attachment B.

## **6. Adopt Interim Calaveras County Parks and Recreation Plan**

Adopt an Interim Parks and Recreation Plan that will serve as the basis for funding and project development. A proposed interim plan has been drafted pursuant to County Code Section 16.24.030 and is presented in Attachment C.

Each of these recommended actions are discussed in the following sections.

## **II. DISCUSSION**

### **A. ROLE AND GOALS OF TASK FORCE**

By action of the Calaveras County Board of Supervisors on September 18, 2006, the Parks and Recreation Task Force was formed for the purpose of determining the recreational needs of Calaveras County residents. The Task Force is

composed of five members from each of the five supervisorial districts, all appointed by their district supervisor. At the time of Task Force formation, the following goals were established:

1. Identify All Recreation Providers
2. Identify All Recreation Programs
3. Determine All Available Facilities
4. Identify Service Delivery Costs
5. Review Structural Options with Financial Considerations
6. Review Sensitivities of Existing Local Organizations

## **B. EFFORTS OF THE TASK FORCE**

The Task Force convened a series of meetings beginning on October 10, 2006 and continuing through April 2007. Deliverables were identified at each meeting and were subject to completion by the following meeting. Each subsequent meeting was intended to provide an opportunity to review deliverables associated with each of the above cited tasks. Through this process the group gathered solid information that served as content for a series of lively discussions, allowing this collection of committed volunteers to share perspectives and learn from each other's experiences. We had visitors that provided still more guidance, and are confident that our conclusions are well founded and will serve as a foundation for the extensive work to follow. The following is a summary of Task Force activities and results organized by the board-established goals or tasks.<sup>2</sup>

### **1. Task No. 1: Identify All Recreation Providers**

Task No. 1 was a relatively simple data collection task. Relying on input from the members of the Task Force, recreation providers were identified in the County. These results were compiled and are presented in Table 1.

---

<sup>2</sup> It was recognized that the "goals" established by board Minute Order creating the Parks and Recreation Task Force on Sept. 18, 2006 were not goals in planning vernacular and have been re-phrased as "tasks" for the purposes of this report.

## **2. Task No. 2: Identify All Recreation Programs**

Task No. 2 was a relatively simple data collection task. Relying on input from the members of the Task Force, recreation programs were identified in the County. These results were compiled and are also presented in Table 1.

Although no recreation programs are currently operated by county government, it is important to note that the county *is responsible* for a recreation program. As a condition of the Proposition 40 Grant funding agreement for the Mark Twain Gymnasium and the Bret Harte Angels project, Calaveras County agreed to provide oversight and management of the public use hours of those facilities. To date, the county has yet to find a way to implement this program. As this program does not yet exist, it is not listed in our database of existing programs.

## **3. Task No. 3: Determine All Available Facilities**

Task No. 3 was a relatively simple data collection task. Relying on input from the members of the Task Force, recreation facilities were identified in each of the five supervisorial districts. These results were compiled and are presented in Table 2. Note that the only recreation facility owned by the county is Murphys Park. The Murphys Park is operated by the Murphys Community Club. While the county insures the facility and provides legal and administrative support, all improvements and maintenance are funded by private donations and user fees.

Ownership of other public recreation facilities in the county is divided among a wide variety of public agencies and private foundations/clubs. On the surface, none of these facilities appear to be at risk of closing, but there is a common struggle among many to maintain enough volunteers to operate and maintain the sites. Insurance costs are also frequently raised as an operational issue and have been a primary factor in the relinquishment of several facilities by the Ebbetts Pass Veterans Memorial District.

## **4. Task No. 4: Identify Service Delivery Costs**

Where available, service delivery costs were discovered from willing facility owners/operators, with the maintenance and insurance costs documented on Table 3.

The only county-owned park and recreation facility is Murphys Park. While the county has insured the facility, it has never financed any improvements or maintenance. The park is operated by the Murphys Community Club and operationally funded by user fees and donations. In Fiscal Year 2007, Calaveras County budgeted \$15,000 for the park, which has been used to

fund the utilities and a small improvement project to provide sewer to the Hut. The costs of the county Administrative Office pursuing various grant opportunities to fund park expansion are not included in this table.

It was determined that the effort to discover service delivery costs for recreation programs was premature and had little relevance unless and until an entity assumed responsibility for operating and managing recreation programs. Accordingly, that research was postponed.

The information discovery and the building of the database encompassing Task Nos. 1 through 4 will be useful as a recreation master plan is developed for the county.

## **5. Task No. 5: Review Structural Options with Financial Considerations**

A review of structural options with financial considerations was deemed to be the most vital component of the Task Force efforts. From the outset, nearly all Task Force members held a common view that an entity must be created to advocate for recreation in Calaveras County. This entity could effectively apply for and manage state and federal grant funding such as Proposition 40. This entity could be a mechanism for assessing needs and designing the parks for new residential development. This same entity could reverse the trend of duplication of services being provided by public agencies and volunteer groups. And indeed with the projected population growth of Calaveras County likely overwhelming key aspects of the existing ad-hoc structure, this entity could step in to manage new and existing facilities and develop programs to help preserve our quality of life.

Many on the Task Force were aware of the recent developments in Amador County. At one of our sessions we were given a presentation by Tracey Towner-Yep, the director of the Amador County Recreation Agency. She summarized the Joint Powers Authority (JPA) model they have proceeded with over the past few years, which is a transitional structure that has been developed using the government resources available in their county. The County of Amador had initially funded the eighty-eight thousand dollars necessary to put the group together and fund the first year of operation, which Tracey noted was well below what was actually needed. A collage of interests combined to form the JPA. The members include the county, all five incorporated cities and the countywide school district. Each member contributes financially to support the agency, while the director is responsible for responding to each of their specific interests. The JPA then funded the creation of the Amador County Recreation Master Plan, which cost thirty-thousand dollars. Ms. Towner-Yep worked hard to negotiate a rate they could afford, and actually got the Nexus Study included within the same contracted amount. At this time, the director spends the bulk of her

time attending meetings of the different JPA Member bodies, and raising money from outside sources to keep the Recreation Agency solvent. The long term plan is to form a county-wide Recreation District. In the meantime they still have an entity qualified to apply for grant money, and run facilities and programs on a small scale. Tracey emphasized that the creation of the transitional JPA model has allowed their fledgling agency to show a track record of achievement which has helped garner a network of support, allowing the Recreation Agency to grow. She is confident that very soon they will be ready to pass a measure needed to form an effective independent Recreation District.

Our Task Force was also visited by LAFCO rep John Benoit. He provided a breadth of information about the difference between county department and special district models, compared the oversight of commissions versus boards of directors, and answered inquiries from members regarding how we can best proceed. He also discussed other funding options and structures such as Landscape & Lighting Districts, and emphasized the difficulty in passing ballot measures. The key to gaining LAFCO Approval is to eliminate “duplication of services” between government agencies such as the veterans districts who have taken on the role of recreation providers, and any proposed new entity. He emphasized that if any model, whether transitional or permanent, is to proceed with LAFCO approval, a Recreation Plan is required.

From our research, forming an independent countywide recreation district pursuant to Government Code Section 66477 is agreed upon as the best model to directly serve the public good. The County of Calaveras has limited financial resources each year, and adding a recreation department into the existing government structure would be ill advised, and not politically feasible long term. While there will be some support regarding the creation of a special district, as with Amador it is very unlikely that the voting public will support a measure without a clear idea of what the agency can accomplish. A proven track record and a good plan are needed.

In order for the path to be developed that will lead us to a countywide Recreation District a transitional agency is required. Like Amador, we too have a desperate need to manage the issues at hand while progressing to the best structure. There must be an agency to qualify and apply for grant monies, and to effectively communicate a consistent message that recreation is a vital component in maintaining our quality of life. The county government needs to fulfill its obligations while moving as quickly as possible to get out of the recreation business. This will take a concerted effort. The transitional agency will by necessity be separate from the county government structure so as to keep its focus and to gain autonomy from the county government as it grows. This model can effectively accomplish the immediate tasks while building toward a more positive future.

## **6. Task No. 6: Review Sensitivities of Existing Local Organizations**

The diversity of our Task Force allowed for the expression of the differing perspectives of the existing stakeholders in each of our discussions. This is a process that must continue. Without question, the existing governmental agencies and volunteer groups will need to be involved in the ongoing dialogue as the governance models are created. As a Parks and Recreation Master Plan is developed, the existing providers must play a key role. The Task Force determined that we needed not just to “review the sensitivities” of the existing local organizations, but to include them as the ongoing structure is developed. These local organizations include but are not limited to the facilities providers such as San Andreas Recreation District, Jenny Lind Veterans Memorial District, Valley Springs Teen Center, San Andreas Senior Center, Calaveras County Historical Society, Calaveras County Arts Council, West Point Veterans Memorial District, West Point Benefit Club, Blue Mountain Coalition for Youth, Blue Mountain Players, American Legion Calaveras Post 376, Mountain Ranch Community Park, Mokelumne Hill Veterans Memorial District, Copperopolis Park and Recreation Association, Calaveras Children’s Repertory Theater, Angels Camp Veterans Memorial District, the City of Angels Camp, Bret Harte Angels, Inc., Calaveras County Fairgrounds, AMA Boosters Club, Feeney Park Foundation, Murphys Community Club, Black Bart Players, Ebbetts Pass Veterans Memorial District, White Pines Park, and all school districts in the county. Additionally, any recreation program providers such as, but not limited to those listed in Table 1, will be informed as the Recreation Plan is developed and likewise encouraged to participate in the process.

All providers will be “kept in the loop” on all activities and actions of the Recreation Agency through direct communication from their district’s representative on the Recreation Commission and frequent community meetings with the Recreation Manager in attendance. Thus, the new countywide recreation entity can provide augmentation and support wherever possible at the request and with the willingness of those service providers. The necessary track record of success in providing needed services will thus be developed. Partnerships with the local organizations in all five county supervisorial districts will be the key to success for the Calaveras Parks and Recreation Agency.

## **C. NEEDS STATEMENT**

Although a needs statement was not identified in the goals or tasks of the Task Force, it is important to note that each of the task force members cited compelling needs for additional recreational resources in Calaveras County.

In 1982, a visionary Board of Supervisors enacted an ordinance that reflected the principles and policies of the Quimby Act. By that action, the board asserted the need for a stock of public recreational space that grew with development and population. A fundamental principle of the Quimby Act and the local ordinance was the dedication of public recreational space at a rate of 2.5 acres for every 1000 projected new residents. Since that time, dozens upon dozens of subdivisions have been approved by the board creating thousands of new homes and more than ten-thousand new residents. During that period, no new public parks were created. Now we face a critical deficiency in public parks, and immediate action is needed.

## **D. RECOMMENDATIONS**

The Task Force has come to conclude that a series of steps are needed to reach this goal. Meanwhile, there is a crying need to fulfill commitments already made by the county. The following discussion relates specifically to the recommendations previously listed. It uses the same capital letter to refer to the prior recommendations; this section explains how the task force decided what to recommend.

### **1. Establish Calaveras Parks and Recreation Agency**

The county has been in the parks and recreation business for years; however, an administrative structure or staffing program has never been established to implement prior actions of the Board of Supervisors. With the passage of state park bond issues, funding has been provided or programmed to the county or local districts for “permanent” park facilities. These bond issues, such as Proposition 40, have placed the county into a coordinator role for money received within the county. The County Administration Office and County Counsel’s office have, of necessity, been required to handle grant compliance issues funded out of the county’s General Fund.

Residents of the county “expect” these promised grant funds to materialize into tangible facilities. County staff has shouldered the burden to fulfill these efforts without benefit of an administrative or staff structure to clarify the process.

The Parks and Recreation Task Force feel it is time for this to change.

The legal foundation for the staff efforts to date flow from the Calaveras County General Plan (last consolidated in 1996). On page U-20 of that document is found the most relevant policy direction, which is re-stated in the box on the left of page 9.

**Insert A. Excerpt from County General Plan (page U-20, adopted 1996)**

**Goal V-8:** Provide adequate local parks and recreation facilities to serve the County's population.

**Policy V-8A:** Encourage community development and operation of local parks and recreation facilities, especially within and near the County's population centers.

**Implementation Measure V-8A-1:** Actively solicit technical assistance and funding from federal and state sources for the development, maintenance and operation of local parks and recreation facilities.

**Implementation Measure V-8A-2:** Support the efforts of communities which demonstrate the ability to form and properly operate a Recreation and Park District.

**Implementation Measure V-8S-3:** Methods of obtaining local parks for public use include:

- contributions from individual owners and private organizations
- open space dedications of areas being developed
- purchase
- requirement of in-lieu park fee for future purchase

**Policy V-8B:** Review new land subdivisions and other development projects to assure that adequate land is provided for local parks and recreation facilities.

**Implementation Measure V-8B-1:** Require dedication of park land and/or payment of fees for the development and operation of local parks.

**Implementation Measure V-8B-2:** Strive to provide 2 ½ acres of new local park land for every 1,000 resident population."

In furtherance of that policy the Board passed Ordinance 1523, adopted in 1982 in which the Board adopted Calaveras Code Chapter 16-24 to provide local parkland recreation funds by parkland dedication.

*"The Board of Supervisors finds that with the ongoing growth and development of community areas in the county, there is a need to provide a means to acquire, develop and maintain lands for the purposes of public parks and recreation facilities."*

Unfortunately, implementation of this code hasn't occurred over the 25 years since it was adopted. (More on this subject is discussed in section 3 below.)

The results of all this is that the county has backed into the parks and recreation business. Statewide park bond funds are available and are "politically" committed and the public expects that the money will be spent as promised.

We recommend that a Calaveras Parks and Recreation Agency be established to provide the transition to an independent special district and advocate for recreation in the interim.

Obviously, both the CAO and County Counsel's office will need to continue to be involved in this effort. It is anticipated that the Recreation Manager and the support of the Parks and Recreation Commission will relieve day-to-day burdens off both the existing departments. Final control of their efforts will rest with the Board of Supervisors.

It is recommended that the Recreation Commission be a five person body with one member appointed by each supervisor. The members will serve two year terms concurrent with the terms of their appointing county supervisor.

## **2. Approve the Interim CPRA Mission Statement**

This brief document (Attachment A) outlines the purpose and vision of the Calaveras Parks and Recreation Agency. Once the CPRA is established, it will develop a more complete draft mission statement for the Board of Supervisors to consider.

## **3. Create and Fill the CPRA Manager Position**

To focus efforts to implement Proposition 40 and maximize funds from other grant programs as they become available, as well as to efficiently manage all recreation issues for the county, it is necessary to hire a Parks and Recreation Manager. This individual would be a focal point for information, and action on state park bond implementation. A list of major responsibilities is found in the recommendation section of this report. Desirable qualifications for this position will be a background in the field of parks and recreation administration. This will expedite discussions with state staff and be helpful to local agencies and citizen groups. It is critical that the individual hired be solution oriented, have exceptional communications skills, and management creativity. They should be prepared to be personally dedicated to the mission at hand, and available for public meetings and other activities outside regular business hours. Speed in filling this position is EXTREMELY IMPORTANT. The position will be full time.

We request this position be included as a request in the 07-08 Preliminary Budget, and the board direct immediate efforts be initiated to fill this position. We further request an implementation progress report from the County Administrator be scheduled 60 days after the board acts upon this report.

## **4. Park Dedication (Quimby Act) Implementation**

The Task Force feels strongly that it is time to fully implement the Quimby Act. To move forward it is necessary to modify the ordinance text. One clarification should be added to the text which presently identifies only a Parks and Recreation District as the agency to implement a plan. The text should be changed to include the county Board of Supervisors, veteran's districts, local parks and recreation districts or other local agencies. All these agencies are potential recipients of park dedication funds. School districts or any other local agency which will commit to long term use of park facilities should also be eligible. The ordinance needs clarification on eligibility to use parkland dedication funds for land acquisition and facility development.

The board also needs to improve the ordinance by adding specific park dedication fees to be collected for individual (non-subdivision) projects. Considering that County Code 16-24 has not been implemented for years, it is vital that a dedication fee be established immediately so that park development can begin in affected residential areas. The county should prioritize the adoption of interim fees until the Master Parks Plan is developed, whereas a permanent fee can be derived following the plan approval.

## **5. Adopt Interim Calaveras County Parks and Recreation Plan**

Lastly, Attachment C is a draft interim Calaveras County Parks and Recreation Plan that should be adopted concurrently with the modifications to the ordinance code.

The draft plan is derived from three sources, they are:

- The 1996 Calaveras County General Plan;
- The local facility inventory work undertaken by our Task Force; and
- Proposed goals, policies and implementation measures considered by our Task Force to provide interim guidance until a new county General Plan and a separate Calaveras County Parks and Recreation Master Plan can be adopted.

## **III. FISCAL IMPACT**

Adoption of the recommended actions would have significant fiscal impacts, both positive and negative as summarized in following sections.

### **A. ANTICIPATED EXPENSES**

1. *Modifying the Calaveras County Code Chapter 16.24 Parks and Recreation Facilities, Dedications, Fees* would require a nominal one-time expense to draft revised language and process the necessary board action.
2. In and of itself, *establishing the Calaveras Parks and Recreation Agency* would require a nominal one-time expense to draft a board resolution and process the necessary board action. However, it is anticipated that CPRA would be a General Fund department that would have ongoing expenses. Those expenses are dominantly staff-related and are outlined under item no. 5 below.

3. *Appointing the Parks and Recreation Commission* would require a nominal one-time expense to draft a board resolution and process the necessary board action. As committee positions would be strictly voluntary with no compensation, no significant ongoing expenses are anticipated.
4. *Adopting the CPRA Mission Statement* would require a nominal one-time expense to draft a board resolution and process the necessary board action.
5. *Creating and filling the Recreation Agency Manager* position as a General Fund position would have significant short-term impact. While the Task Force realizes the county Human Resources Department will determine the final figure, from our research we estimate the salary and benefits for this position at \$65,000 per year. In addition, expenses would be incurred for associated infrastructure needs, including office space and furniture, telephone and network facilities and access, administrative support, legal counsel, etc.
6. *Adopting an Interim Calaveras County Parks and Recreation Plan* would require a nominal one-time expense to draft a board resolution and process the necessary Board action.

## **B. POTENTIAL REVENUES**

While the Calaveras Parks and Recreation Agency is anticipated to function as a General Fund department, it is anticipated that an increasing proportion of its expenses will be offset by external revenue sources, including corporate sponsorship, grant funding and fundraising events.

1. Proposition 40 Grant funds for administration of those projects.
2. Other grant opportunities
3. Corporate Sponsorships
4. Fundraising Events
5. Developer Fees
6. User Fees
7. Voter Approved Funding

As manifested in the CPRA mission statement, it is the Task Force's goal and intent for the CPRA to be self-sufficient within three years.

### **C. AVOIDED COSTS**

While difficult to quantify, it has repeatedly and widely documented that the availability of park and recreation facilities to the general population confer many benefits, which in the long run save considerable expense to many public services dealing with issues such as:

1. Probation Compliance
2. Juvenile delinquency
3. Substance abuse
4. Crime
5. Health
6. Obesity

### **IV. OTHER DEPARTMENTS**

This final report of the Parks and Recreation Task Force has been prepared in cooperation with the County Administration Office and County Counsel. It is anticipated that formation of the Calaveras Parks and Recreation Agency will place additional burdens on other General Fund departments including County Counsel, Administration, and Auditor.

**ATTACHMENT A.**  
**CALAVERAS PARKS AND RECREATION AGENCY**  
**MISSION STATEMENT**

---

The Calaveras Parks and Recreation Agency (CPRA) has been established by the County of Calaveras to initiate the process of creating an efficient and adequately funded system of parks and recreational programs within Calaveras County.

The CPRA is to provide a supporting role to local governments as well as non-profit and volunteer organizations that provide existing park facilities and programs currently serving county residents. In locations not currently within an agency, CPRA shall be the local provider for new facilities as they are proposed and funded.

The initial year's efforts will be two-fold. The Agency will ensure allocated grant funds for existing proposed projects are finalized and the facilities are built according to the commitments on the use of those funds. Secondly, the parkland dedication program shall be institutionalized and made operational.

The longer term effort (one to three years) will be to work with local government agencies and community organizations on developing a Parks and Recreation Master Plan for the county and on developing a permanent governmental structure that will be capable of implementing the Master Plan.

The Calaveras Parks and Recreation Agency will work to become self-supporting within three years and, following the development of the Recreation Master Plan, become a Special District independent of county government within five years.

**ATTACHMENT B.**  
**CALAVERAS PARKS AND RECREATION AGENCY**  
**RECREATION AGENCY MANAGER POSITION**

---

Responsibilities for this position would be, but not limited to:

1. Administration of Grants from the Proposition 40 California Clean Water, Clean Air, Safe Neighborhood Parks, and Coastal Protection Act of 2002

Oversee all Proposition 40 projects and timelines, ensuring completion and compliance so no loss of previously granted funding takes place. Supervise programs and coordinate with volunteers on completing Proposition 40 projects as mandated by the county and the terms of the grant agreements (i.e. the Mark Twain Gymnasium).

2. Oversight of Existing Proposed Projects.

Represent county staff on the implementation of proposed projects. Among these obligations are to:

- Work with the Murphys Community Club on the Murphys Park expansion and related activities on the adjacent county owned properties. Pursue Grant money such as Proposition 50 Water, Coastal and Beach Protection Act of 2002 funds.
- Work with the Calaveras County Water District on the implementation of the new parks to be built on Highway 26 at Sandy Gulch and in Valley Springs at Cosgrove Creek. Pursue grant monies such as Proposition 84 Clean Water, Parks and Coastal Protection Act in conjunction with CCWD.

3. Develop New Park Projects

Identify potential park and trail projects and work with local agencies and citizens to cause these facilities to be funded and built or improved.

4. Interim Funding

Apply for a 2007 and 2008 Community Development Block Grant application for at least \$30,000 each year for funding to partially underwrite the cost of the CPRA and county staff costs until more permanent financing can be established.

5. Park Dedication Ordinance Compliance

Coordinate on implementation of the Park Dedication Ordinance as recommended in paragraph III.D.4. "Park Dedication (Quimby Act) Implementation".

6. Inter-government Liaison and Citizen Involvement

Within Calaveras County, existing facilities are operated by and largely funded due to the hard work of volunteers and board members of local park organizations and veterans districts. The manager shall work with these groups and strive to assist them in their vital efforts. The manager will provide information to these groups and other recreation program providers on the effort to provide a permanent countywide park and recreation program. The manager will work with the Recreation Commission to provide ample opportunities for these groups to help determine how a countywide agency can SUPPORT their existing programs and help in their funding and project development efforts. The goal is a symbiotic permanent structure that respects and augments the efforts of these citizen volunteers and local agencies.

7. Park Dedication (Quimby Act) Implementation

Immediately (within 60 days) initiate the process to implement the provisions of the Calaveras County Code Chapter 16.24 entitled Park and Recreation, Dedication and Fees. Among the proposed changes to the ordinance are:

- Modify the ordinance to add text that states that the Calaveras County Board of Supervisors and its subunits, a Park and Recreation District, or other eligible districts are eligible to receive park dedication monies.

8. Utilize the Park Dedication Fees

Utilize the Park Dedication Fees adopted by the county as suggested in Section I-1 on page 1 and Section III-1 on page 11 of the Recreation Task Force Final Report.

9. Utilize Attachment C of this report as the Interim Countywide Park Dedication Plan.

# **ATTACHMENT C. CALAVERAS COUNTY PARKS AND RECREATION PLAN**

---

## **I. INTRODUCTION**

A Calaveras County Parks and Recreation Plan is necessary to implement the collection of parkland dedication fees under the Quimby Act. The existing Calaveras County General Plan provides for the implementation of a park dedication fee program. The Calaveras County Ordinance Code 16-24 makes provision for the collection of these fees. That ordinance is being updated to reflect a fee structure. This interim plan provides the basis for the distribution of the fees to serve area residents. It is anticipated that the new Calaveras County General Plan presently under development will include a revised Recreation Section within it. Once that is adopted a parks master plan will be approved based upon the new General Plan which will supersede this interim document.

The Interim Plan background sections are divided into separate sections addressing State Parks, Reservoir Recreation Areas, Federal and State Natural Resource Lands, and Private Recreational Facilities. This discussion is based upon the existing General Plan and it provides a context within which the local park program will operate.

The local parks section provides embryonic guidance on how the parks and recreation function will need to grow and mature as the county increases in population and complexity.

## **II. MAP AND DISTRIBUTION OF MAJOR PARKS AND RECREATION FACILITIES**

The schematic location of state parks, reservoir recreation facilities and major water areas are shown on Figure 1. The Stanislaus National Forest and Bureau of Land Management lands are shown on this map in a single category due to the similarity of their primary purposes, which in most cases is not for recreation. Clearly, however, these are recreational resources as well. Important private recreation facilities are also identified.

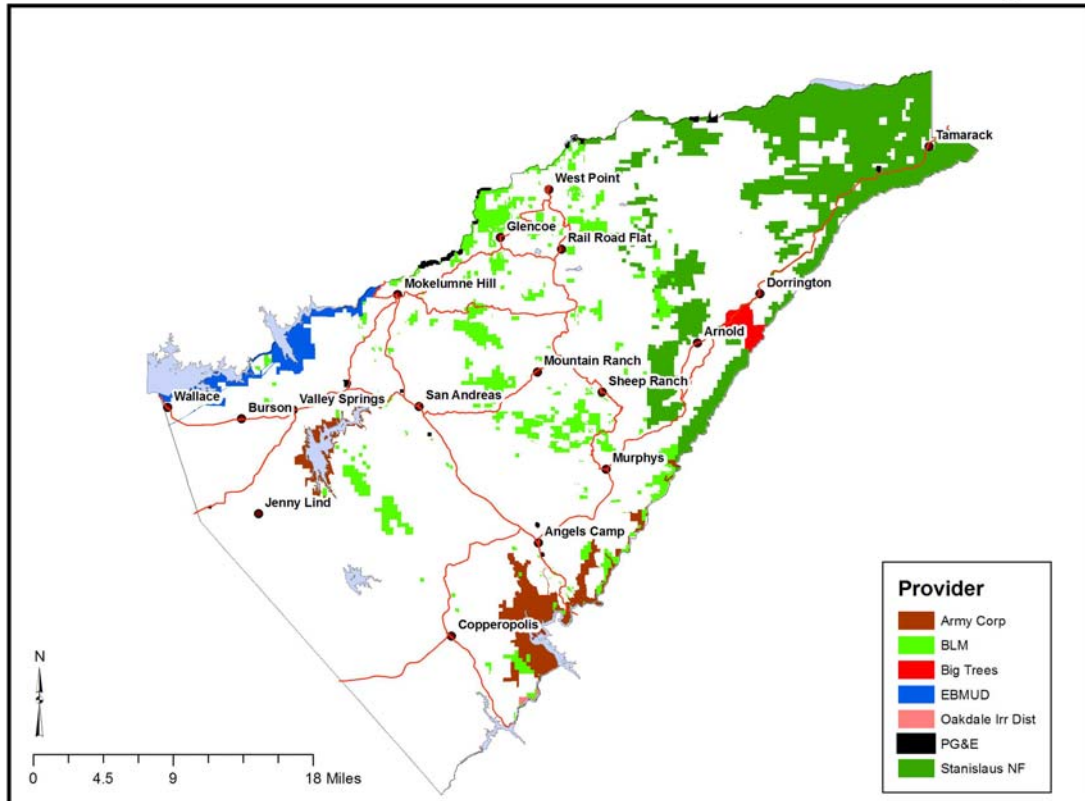
## **III. PARKS AND RECREATIONAL RESOURCES**

The provision of parks and open space areas to serve the developed areas is essential to the physical and emotional well being of all segments of their populations, as these parks form alternatives to the often-intense pace of life. Major parks provide areas where people can enjoy active and passive recreation not otherwise available, such as nature studies, camping, or just observing the natural landscape.

The preservation of lands for outdoor recreation also assists in the conservation of the county's unique natural, scenic, or cultural resources. Such preservation

provides for recreational opportunities while helping to maintain the quality of life for county residents and visitors.

Figure 1



16 Apr 07

Federal, State and District Lands Used or Available for Recreation.

### A. RESERVOIR RECREATION AREAS

Water-oriented recreational opportunities are offered by numerous major reservoirs: Pardee, Camanche, New Hogan, Lake Tulloch, New Melones, Salt Springs, and Spicer.

- Pardee Reservoir is owned and operated by the East Bay Municipal Utility District. As a source of domestic drinking water, recreational use of the area is restricted to non-contact activities such as fishing, camping and picnicking.
  
- Camanche Reservoir is owned and operated by the East Bay Municipal Utility District. Swimming and boating are permitted at the Reservoir, and the area offers a variety of overnight accommodations and recreational activities.
  
- New Hogan Reservoir is owned and managed by the United States Army Corp of Engineers. Although less developed than Camanche in terms of overnight facilities and services, New Hogan receives substantial use, including boating, swimming, fishing, picnicking and camping.

- Lake Tulloch is owned and operated by the Tri-Dam Authority for irrigation and domestic water supply. The Lake is also used for recreation, with boating and swimming permitted.
- New Melones Reservoir is owned and managed by the Bureau of Reclamation. New Melones receives substantial recreational use, including boating, swimming, fishing and camping.
- Salt Springs Reservoir is located within the Stanislaus National Forest along the northeast County boundary with Amador County. Pacific Gas and Electric operates the reservoir for hydroelectric power. Fishing, boating, swimming, rock climbing and camping are permitted.
- Salt Spring Valley Reservoir is located near Copperopolis. Fishing, boating, swimming, hunting and camping are permitted.
- Spicer Reservoir is owned by the Calaveras County Water District. The Northern California Power Agency operates the reservoir for power generation. Recreational facilities are available.

These increasingly popular facilities provide a major recreational resource for the county and serves as the major park system for its residents and visitors. In addition there are numerous smaller reservoirs within the county that also satisfy recreational purposes. Many of the reservoirs operated by the Calaveras County Water District have limited trails and facilities that serve the public.

These recreation facilities are not only important to provide facilities to local residents, but also help to make Calaveras County a destination for the tourism industry.

## **B. FEDERAL AND STATE NATURAL RESOURCE LANDS**

The Federal Government is a major owner of Calaveras County land with approximately 85,000 acres or 13 percent of the land area of the county.

### **1. Bureau of Land Management**

The Bureau of Land Management owns scattered holdings throughout the county of approximately 39,000 acres. The Army Corps of Engineers owns lands in association with the Bureau for operating BLM reservoirs. These are relatively small state owned forestlands in the county. When added together these lands provide additional recreational opportunities to our citizens and protection to our habitat.

The Bureau of Land Management has land holdings scattered across the county of extremely variable size and shape. Their holdings at New Hogan and New Melones Reservoirs were discussed above. There are many other smaller lots that are put to a range of public purposes. These small parcels are important to the quality of life in the county. Residents adjoining these parcels often use them informally for hiking. They serve as refuges for wildlife species and as such are critical to the biological diversity of the county.

## **2. Stanislaus National Forest**

The Stanislaus National Forest covers substantial acreage within the eastern portion of the County. A small portion of the Mokelumne Wilderness Area within that national forest is located within our County. The Forest Service provides camping and recreational facilities widely scattered on its land.

## **3. State Park**

Calaveras Big Trees State Park is bisected by the North Fork Stanislaus River, and straddles the Calaveras-Tuolumne County line, with about 40 percent of the 6,000 acres located in Calaveras County. The two most significant natural features are the North Grove (located in Calaveras County) and South Groves (located in Tuolumne County) of Sierra Redwood (*sequoiadendron giganteum*), commonly know as the giant sequoia. The tallest tree in the park is over 300 feet and some of the older trees are an estimated 3,000 years old.

The park contains two campgrounds and numerous trails and recreational facilities. Some potential for expansion of the park within Calaveras County still exists.

The state also provides campgrounds within the forest along the State Route 4 corridor (Big Trees State Park) and near Salt Springs Reservoir in Amador County.

## **C. PRIVATE RECREATIONAL FACILITIES**

Increasingly, private developments are being considered that provide on-site recreational facilities to serve project residents. These facilities provide project amenities and are effective sales tools. They may limit the effect of new homes on the current lack of public park facilities. This interim plan encourages the placement of such facilities in private developments and encourages the development of pathways that are integrated in location and design with those of adjacent projects, shopping areas and public facilities.

In appropriate locations, the provisions of outdoor recreational facilities, e.g. private campgrounds, could add to the recreational diversity of the county.

Design of such facilities needs to be of a high standard to be compatible with the adjacent rural environment.

There are several outstanding limestone caves that are operating within the county. The three major caves are Mercer Caverns near Murphys, Moaning Cave near Vallecito, and California Caverns at Cave City near Mountain Ranch. Mercer Caves opened to the public in 1887. It contains some of the rarest calcite formations. Moaning Cave has a large chamber accessible from a 100-foot spiral staircase. It also contained the oldest human remains ever found in the Northern Hemisphere. California Caverns, the oldest commercial cave in Calaveras County, has numerous chambers and passageways and lakes up to 200 feet deep. These sites are designated Commercial Recreation on the Land Use Plan map.

There are also private commercial recreation facilities supporting the Sierra's beauty and recreational providence. Cottage Springs and Camp Tamarack are examples.

#### **D. EBBETTS PASS NATIONAL SCENIC BYWAY**

This 61-mile stretch of State Route 4 and 89 in Calaveras and Alpine Counties, includes the area between Arnold and Markleeville in the Sierra Nevada Mountains. The vision behind this designation is to preserve the unique scenic, natural, historical, cultural, archaeological, and recreational resources along this scenic byway. This Scenic Byway designation was granted by the U.S. Department of Transportation on September 22, 2005.

The Ebbetts Pass Scenic Byway Association is working on programs to protect this scenic and recreational resource.

#### **E. OTHER RECREATIONAL FACILITIES**

Frogtown is the site of the annual Calaveras County Fair and Jumping Frog Jubilee, and is owned by the State of California. The fairgrounds are located on a 68-acre site, approximately one mile south of Angels Camp. In addition to the annual Frog Jump, numerous public activities are held at the site throughout the year. Camping is available at the site.

### **IV. LOCAL PARKS AND RECREATION PLAN**

In order to ensure that the recreational needs of present and future residents of the county are provided for during the planning period, the following goals and policies were developed.

#### **A. RELATIONSHIP OF MAJOR FACILITIES TO LOCAL PARKS**

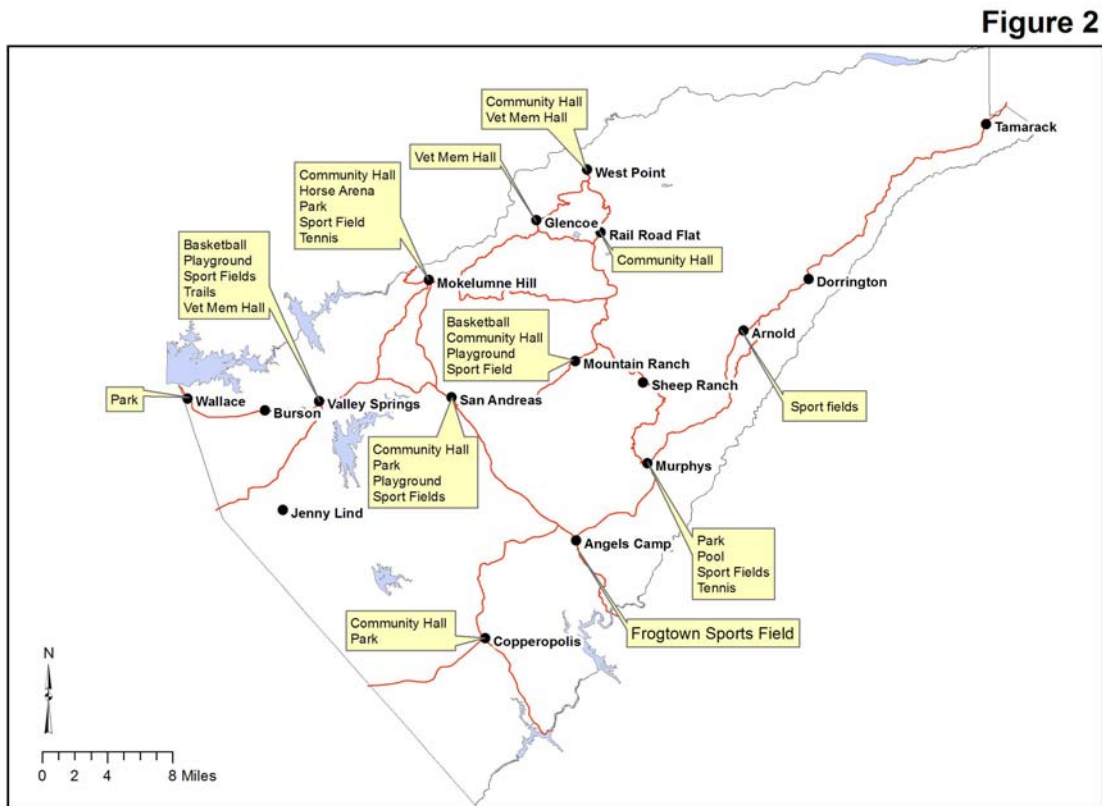
These major facilities are geographically dispersed throughout the county and provide substantial recreational opportunities to our residents and tourists alike.

While they provide a range of activities, they do not adequately meet the needs of more localized small-scale parks and community meeting places. It is the combination of these differing recreational types that will provide a complete recreational system in Calaveras County

**B. EXISTING FACILITIES**

At present, local parks are scattered unevenly across the county. Most are operated and maintained by dedicated citizens and community groups. The county has had a passive involvement in the local parks program. As the county develops, especially in more densely populated areas, there will be an increased need to provide a more organized structure and funding approach in support of those that have been carrying the burden as volunteers.

Table 2 describes the distribution of local parks within the county in 2006. The locations of these existing parks are also shown on Figure 2.

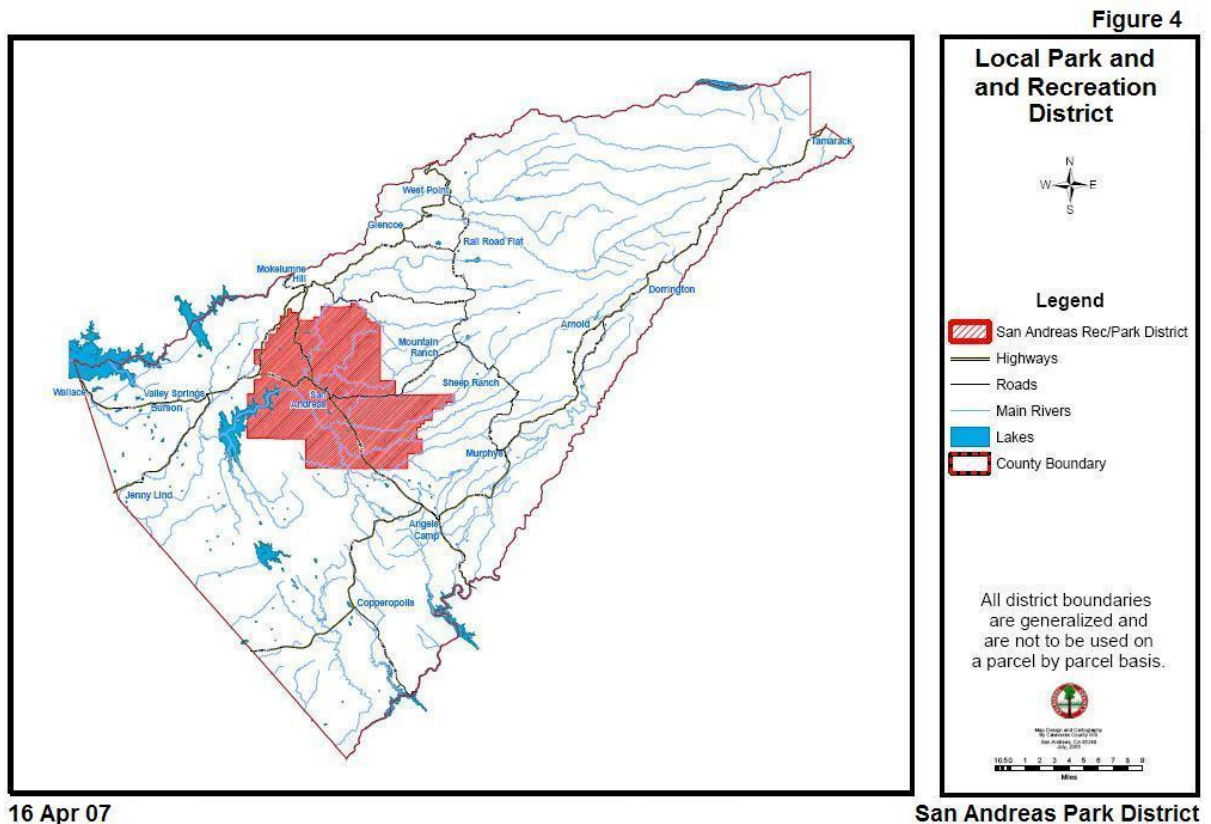
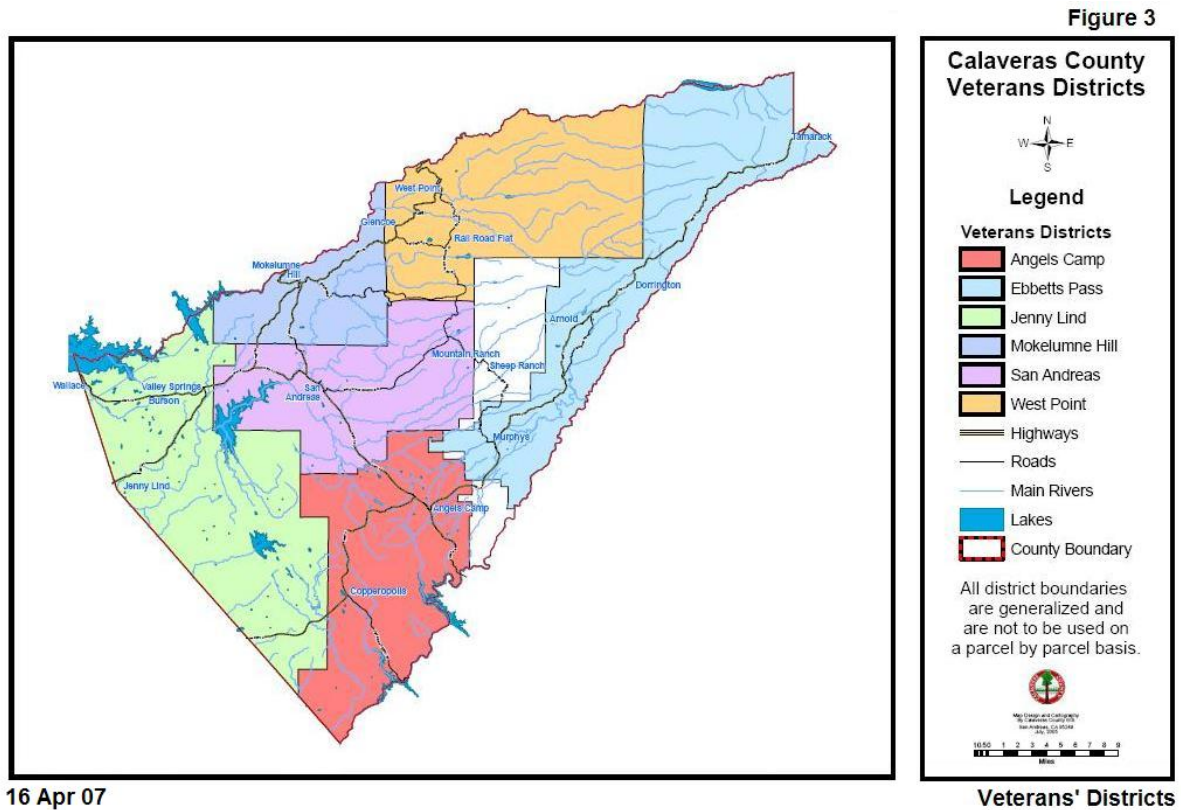


**16 Apr 07 Unincorporated Public Facilities Excluding City of Angels.**

This local parks plan is to provide an Interim Plan that would allow the county to establish parkland dedication fees for the acquisition of local parklands and for the construction of facilities on local parklands.

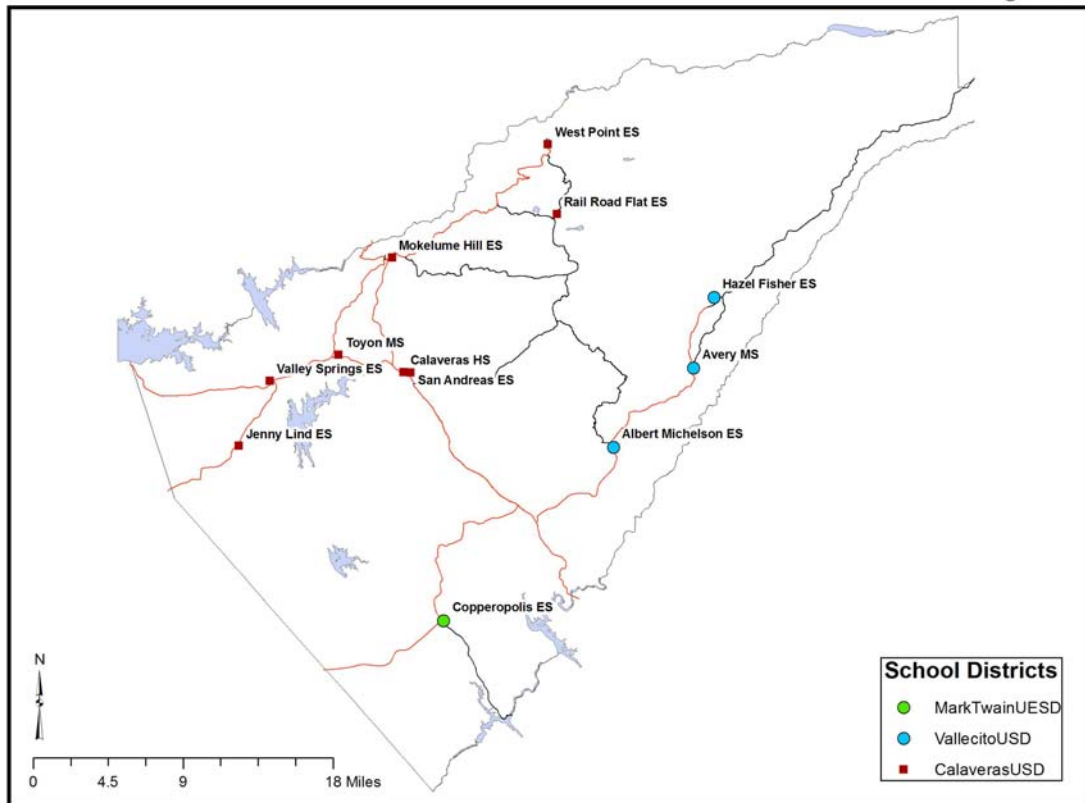
As the county embarks on support of existing efforts, the existing parks will form the initial network of the plan. The facilities operated by the Veterans Districts for their communities form a major component of the local park facilities. The

boundaries of Veterans Districts providing recreational services are shown in Figure 3; the only park and recreation district is shown in Figure 4.



There are additional facilities provided on county owned lands. The one existing county park is located in Murphys. There are community halls located on county land, which are part of the local recreational facilities, e.g. in West Point. The local facilities network also includes the playgrounds provided by elementary, middle and high school sites throughout the county. As shown on Figure 5, these school facilities are found throughout the developed communities within the county and provide some balance to the facilities relative to where the population resides within the county. Other local parks are provided by the San Andreas Recreation and Parks District. The Calaveras County Water District also provides or allows for park facilities on its land holdings and is working on major parks in the West Point area and in Valley Springs.

Figure 5



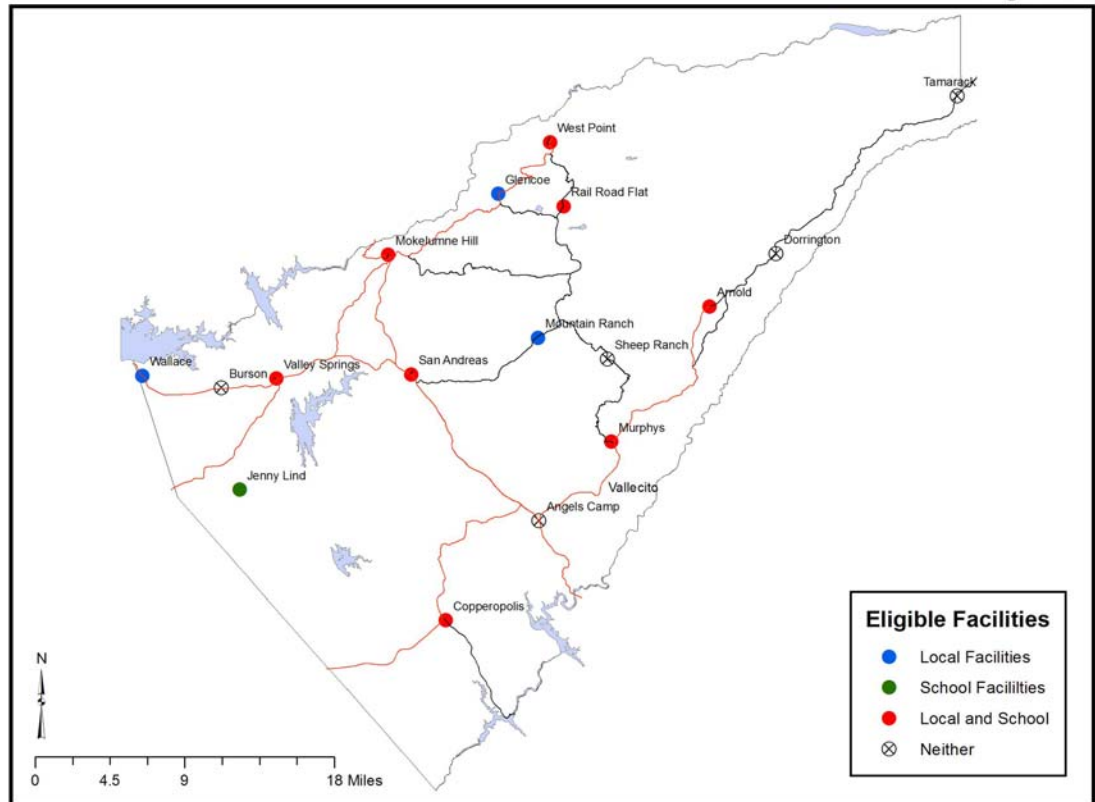
16 Apr 07

Schools with Recreation Facilities Excluding City of Angels.

This collage of local park facilities is all components of the local park plan. These local recreational facilities are shown on Figure 6: the Local Parks Plan. All designated facilities are all potentially eligible to receive parkland dedication fees. Fees can be utilized for acquisition of adjacent land to be added to the park or for the development or improvement of park facilities. The Board of Supervisors is the sole decision-maker on the distribution of these fees. Local agencies can request these funds, as they become available for specific improvements. Park dedication fees collected within the existing district

boundaries of agencies providing parks and recreation services shall be utilized only for facilities within those agency boundaries.

**Figure 6**



16 Apr 07

**Existing Facilities Eligible for Park Dedication Funds.**

### C. IMPLEMENTATION PLAN

As part of this plan, the following goals, policies, and implementation measures are included:

Transform the community will for recreational opportunities into facilities and activities for all ages. Focus our energies on those goals that cannot be readily achieved by individuals or local organizations.

#### 1. Program Goals

- A. Galvanize community support
- B. Foster partnerships
- C. Expand recreational and athletic opportunities for county residents with focus on children
- D. Develop countywide park and recreation plan that will serve as the basis for funding and project development

- E. Secure funding
- F. Provide project management

## **2. Facilities Goals**

- A. To develop a sufficient amount of conveniently located, properly designed park and recreational facilities to serve the needs of all residents with a focus on children and families.
- B. Assure continued park maintenance and operations
- C. Coordinate recreational programs and services
- D. To promote active and passive recreational enjoyment of the county's physical amenities for the continued health, safety and welfare of the citizens of the county.
- E. Conserve national, state and regional recreation areas in the county for habitat protection, health and safety.

## **3. Facilities Policies**

- A. Achieve a level of park facilities of 2.5 acres per 1,000 residents, as per the adopted Calaveras County General Plan.
- B. Create a well-balanced distribution of local parks based on the character and intensity of present and planned residential development and future recreation needs.
- C. Park design shall be appropriate to the recreational needs and access capabilities of all residents in each locality.
- D. Regional-scale public access to scenic areas on the rivers and reservoirs shall be protected and developed, and water-related recreation, such as fishing, boating and picnicking, shall be provided.
- E. Recreational development shall be allowed only in a manner that complements the natural features of the area, including the topography, waterways, vegetation and soil characteristics.
- F. Recreational activity shall be distributed and managed according to an area's carrying capacity with special emphasis on controlling adverse environmental impacts, such as conflict between uses and trespass. At the same time, the regional importance of each area's recreation resources shall be recognized.

- G. Only allow recreational and recreational commercial activities on public reservoirs; other types of uses shall be precluded.

#### **4. Facilities Implementation Measures**

- A. Establish Calaveras Parks and Recreation Agency
- B. Create and fill CPRA manager position to administer a parks and recreation program for the county.
- C. Develop a parks and recreation master plan for the county.
- D. Make recommendations on how to get grants or financial support to acquire land and develop park facilities.
- E. Consider what types of revenue measures might be submitted to voters to establish a permanent funding source for acquisition, operation and maintenance of park facilities and how to distribute the park dedicated funds. A Recreation Agency Commission will be established to advise the Recreation Manager on local park issues.
- F. Prepare and adopt a parkland dedication ordinance to collect funds for acquisition of parklands and construction of park facilities. The fee shall be modified annually to allow for construction inflation costs.
- G. Require that new development meet the park standards by either providing facilities on site or paying the park dedication fee with an amount sufficient to meet the standard. Consideration will be given to requiring all projects over 50 units to provide on-site public recreation facilities.
- H. New local parks can be located elsewhere in the county as part of an on-site development. Park dedication fee credit can be granted for these facilities as long as the park is available for use by the general public. Serious attention should be devoted to adequately fund park maintenance.
- I. Work with local unincorporated communities to determine the means of providing local park services where the need exists, as well as when new development is proposed.
- J. Oppose the sale of BLM on National Forest Lands to non-governmental parties in order to protect the biological diversity of the county. Review all BLM land within the county to determine if it would be suitable for local recreation facilities

**Table 1. Recreation Providers and Programs in Calaveras County**

<u>Provider</u>	<u>Program</u>	<u>Address</u>
<b>District 1</b>		
4H - San Andreas Tri Dam Jenny Lind	Agriculture education Members: SA-12, TriDam-52, JL-60	UC Cooperative Extension 891 Mountain Ranch Rd. San Andreas
FFA	Agriculture education	P.O. Box 607 San Andreas
San Andreas Senior Center	BINGO, bridge, pinochle	956 Mountain Ranch Road San Andreas
Calaveras Youth Basketball Association	Basketball	
Warriors Football and Cheerleading	Football, cheerleading	14 Turner Court
Valley Springs Youth Center	Health education, tutoring, social development, leadership training, self esteem coaching, meals/snacks	201 Pine Street Valley Springs
San Andreas Teen Center	Basketball, punt/pass/kick competition, hip hop classes, pool table, drama classes, arts and crafts	24 Churchill Street San Andreas
Calaveras Youth Soccer League	Soccer for all of western Calaveras	
Calaveras Youth Wrestling	Wrestling	
Foothills Little League	Valley Springs, Jenny Lind, Wallace, Burson, Campo Seco	
Calaveras National Little League	Little League for SA, WP, MH	
Little League District 15 Representative.	Countywide: Foothills/Calaveras National	
Calaveras High Swimming Pool	Public summer swimming	P.O. Box 607 San Andreas, CA 95249
Salvation Army	Summer Camp in Santa Cruz Mountains	
Central San Andreas Library	Summer reading program toddler story time	891 Mountain Ranch Road San Andreas
Calaveras Babe Ruth	Calaveras Reds Traveling baseball team (14 & under)	
Calaveras Babe Ruth	Calaveras Reds Traveling baseball team (18 & under)	
Experimental Aircraft Association District 484	Young Eagles Flying education (Ages 8-17)	

Human Resources Council Head Start	Valley Springs Playgroup	Admin. 1113 Highway 49 San Andreas
Calaveras Saddle Club	Trail rides	
Girl Scouts of Tierra Del Oro	Girl Scouts	
Boy Scouts Golden Heritage District	Boy Scouts	
Army Corps of Engineers New Hogan Lake	Ranger guided walks, campfire programs	2713 Hogan Dam Road Valley Springs CA 95252-9510
East Bay Municipal Utilities District	Bald Eagle Tours Lake Camanche and Pardee	P.O. Box 206 Burson CA 95225
East Bay Municipal Utilities District	Hikes and other programs Lake Camanche and Pardee	4900 Stony Creek Road Ione, CA 95640
Men's Softball	Men's Softball, West Calaveras	
Women's Softball	Women's Softball, West Calaveras	
Co-ed Softball	Co-ed Softball, West Calaveras	
Girls Softball	Valley Springs/San Andreas	
Calaveras Sliders	Competitive girls softball Valley Springs area	
Pony Tail Softball	Angels-Murphys-Arnold Boosters	
Calaveras County Arts Council	Music In The Parks	22 North Main Street San Andreas
Wallace/Burson Association	Bingo, Burson Founders Day	P.O. Box 103 Wallace, CA 95254
Valley Springs Library Association	Melodrama	
?	Square Dancing	
?	Line Dancing	
Mark Twain St. Joseph's Hospital	Various classes and programs	768 Mountain Ranch Road San Andreas, CA 95249
San Andreas Merchants Association	Kite Festival	P.O. Box 811 San Andreas, CA 95249
Valley Springs POW WOW	POWWOW	1290 Paloma Rd. Valley Springs, CA 95252
<b>District 2</b>		
Mokelumne Hill Vets Mem Dist	Meals, ball sports, town events	PO Box 95
Mokelumne Hill Community Trust	Annual History Day	PO Box 375
MH Branch Library	Story hours, computer access, reading, lectures	PO Box 282
Mokelumne Hill Historical Society	Lectures, displays	PO Box 267
Mokelumne Hill Fire Protection Dist	Annual dances and other fundraisers	PO Box 281
Mokelumne Hill Lions Club	Community events, Fourth of July Parade, Bunko, meals	PO Box 710
St Thomas Aquinas Catholic Church	Youth programs	St. Andrews Catholic Church PO Box 550 San Andreas, CA 95249

Mokelumne Hill Community Church	Evening youth programs Town Hall	PO Box
Mokelumne Hill Business Assoc	Oktoberfest	Hotel Leger 8304 Main Street
Calaveras 4-H Wranglers	Horse events	address?
Mokelumne Hill Elementary School	School sports, daily recess	MH Elementary School Highway 26
Mokelumne Hill Elementary School	School sports, daily recess	MH Elementary School Highway 26
<b>District 4</b>		
AMA Athletic Boosters Club	Cheerleading	Box 668 Altaville, CA 95221
AMA Athletic Boosters Club	Girls traveling softball team	Box 668 Altaville, CA 95221
AMA Athletic Boosters Club	Junior bullfrogs football	Box 668 Altaville, CA 95220
AMA Athletic Boosters Club	Ponytail softball	Box 668 Altaville, CA 95221
AMA Athletic Boosters Club	Youth wrestling	Box 668 Altaville, CA 95221
Calaveras American Little League	Calaveras American Little League	Box 358 Copperopolis, CA 95228
Ebbetts Pass Little League	Ebbetts Pass Little League	Box 3264 Arnold, CA 95223
Ebbetts Pass Youth Soccer League	Ebbetts Pass Youth Soccer League	Box 136 Murphys, CA 95247
Ebbetts Pass Youth Soccer League	Soccer camps	Box 136, Murphys, CA 95247
Murphys Dolphins Swim Team	Swim team	
Angels Camp Veterans Mem Dist.	Swimming lessons	
Mountain Aire Tennis Assoc.	Tennis lessons	
California Soccer League	Adult soccer team	
Black Bart Playhouse	Creative dramatics	Box 1180 Altaville, Ca 95221
Black Bart Playhouse	Summer drama workshop	Box 1180 Altaville, Ca 95221
Calaveras Children's Repertory Theatre	Drama Camp	Box 399 Altaville, CA 95221
Calaveras Children's Repertory Theatre	Live Musical Theatre	Box 399 Altaville, CA 95221
Murphys Creek Theatre	"The Mirror Project" Acting Conservatory	Box 603 Murphys, CA 95247
<b>District 5</b>		
Girl Scouts and Boy Scouts Troops		Copperopolis Elementary School Multi-Purpose Room
Lake Tulloch Lions Club	Hot Copper Nights	60 Copper Cove Drive Copperopolis, CA 95228

Lake Tulloch Lions Club	Community Halloween Party	Black Creek Park Copper Cove Lake Tulloch HOA
Poker Flat Lake Tulloch Homeowners Association	Easter egg hunt Bass fishing tournament	Poker Flat Gated Community Lake Tulloch
Saddle Creek Golf Resort	Easter Egg Hunt, Art Walk, Book Club	Saddle Creek Golf Resort
4-H Activities for Youth		Copperopolis Elementary School Multi-Purpose Room
<u>Copperopolis Park &amp; Recreation (CP&amp;R)</u>		PO Box 481 Copperopolis CA 95228 copperparks@yahoo.com

**Table 2. RECREATION FACILITIES IN CALAVERAS COUNTY**

<u>Facilities</u>	<u>Locations</u>	<u>Address</u>	<u>Tax Support</u>
<b>District 1</b>			
Skate park, horseshoes, playground, kitchen, barbecue, restrooms, gazebo	Turner Park	287 Treat Avenue San Andreas	yes
Sports fields	Community Park	999 Park Drive	yes
San Andreas Town Hall	San Andreas Town Hall	24 Churchill Street San Andreas	yes
Lake, campgrounds, trails, marina, tennis courts, basketball courts, volleyball courts, arcade	Lake Camanche, South Shore	Camanche Recreation Company P.O. Box 206 Burson, CA 95225	yes
Reservoir, campgrounds, swimming pool, barbecue, trails, marina	Pardee Recreation Area	East Bay Municipal Utilities District 4900 Stony Creek Road Ione, CA 95640	yes
Trails (21 miles in the Sierra Foothills)	Mokelumne Watershed trails	Mokelumne Watershed and Recreation Division East Bay Municipal Utilities District Campo Seco, CA 95266	
Baseball, soccer and softball fields, barbeque, kitchen, snack bar, picnic area, gazebo, basketball hoop, bathrooms, playground, trails	Jenny Lind Veterans Memorial Park	Daphne Road Valley Springs	no
Hall	Jenny Lind Veterans Memorial Hall	189 Pine Street Valley Springs	yes
Marina, campgrounds, trails, restrooms, parking	New Hogan Lake	Army Corps of Engineers 2713 Hogan Dam Road Valley Springs, CA 95252-9510	yes
Senior Center, meeting rooms	San Andreas Senior Center	956 Mountain Ranch Road San Andreas	no
Teen Center	San Andreas Teen Center	24 Churchill Street San Andreas	no
Library, meeting rooms	San Andreas Library	San Andreas Library 891 Mountain Ranch Rd San Andreas, CA 95249	yes
Library, meeting rooms	Valley Springs Library	Valley Springs Library 240 Pine Street Valley Springs, CA 95252	yes

Meeting rooms	Mark Twain St. Joseph's Hospital	Mark Twain St. Joseph's Hospital 768 Mountain Ranch Road San Andreas, CA 95249	no
Golf course	La Contenta	La Contenta Golf Club PO Box 249 1653 Highway 26 Valley Springs, CA 95252	no
RV Park and Campground	Gold Strike Village	Box 658 1925 Gold Strike Road San Andreas, CA 95249	no
Museum	Calaveras County Historical Museum	Calaveras County Historical Society 30 N. Main Street San Andreas, CA 95249	yes
Museum	The Red Barn Museum	Calaveras County Historical Society Government Center Mountain Ranch Rd. San Andreas, CA 95249	no
Teen Center	Valley Springs Teen Center	201 Pine Street Valley Springs	no
Art Gallery	Calaveras County Arts Council	22 North Main Street San Andreas	no
Pool, track, tennis courts, 2 softball, baseball fields, 2 gymnasiums	Calaveras High School	P.O. Box 607 San Andreas	yes
Fields, gymnasium	Toyon Middle School	Toyon Middle School 3412 Double Springs Rd. Valley Springs	yes
2 softball fields	Claypits	Corner Daphne & Sequoia	no
1 softball/soccer field	Valley Springs Elementary School	Valley Springs Elementary School 240 Pine Street Valley Springs	yes
<b>District 2</b>			
Open space	Mokelumne River Watershed Calaveras River Watershed	BLM Folsom Field Office 63 Natoma Street Folsom, CA 95630	yes
Open space	Mokelumne River Watershed	Calaveras Ranger District Stanislaus National Forest PO Box 500 Hathaway Pines, CA 95233	yes
Little League Ball Field	West Point Elementary School	West Point Elementary School 54 Bald Mountain Rd West Point	yes
All Purpose Room & Gymnasium	West Point Elementary School	West Point Elementary School 54 Bald Mountain Rd West Point	yes
Outdoor Basketball	West Point Elementary School	West Point Elementary School 54 Bald Mountain Rd West Point	yes

Play Ground K-6	West Point Elementary School	West Point Elementary School 54 Bald Mountain Rd West Point	yes
West Point Branch Library	West Point	West Point Branch Library 291 Main St West Point, CA 95255	yes
Computers	West Point	West Point Branch Library 291 Main St West Point, CA 95255	yes
Drop-in Center	West Point	Blue Mountain Coalition for Youth Main St West Point	no
Blue Mountain Theater	West Point	Blue Mountain Players Main Street West Point	no
Community Hall	West Point	West Point Benefit Club 22283 Hwy 26 West Point	no
Veteran's Memorial Hall	West Point	West Point Veterans Memorial District 22273 Hwy 26 West Point	yes
VFW Hall	West Point	Veterans of Foreign Wars Spink Road West Point	yes
Rebekah Lodge	West Point	Main Street West Point	no
Little League Ball Field	Rail Road Flat Elementary School	Rail Road Flat Elementary School Railroad Flat Rd Rail Road Flat	yes
All Purpose Room & Gymnasium	Rail Road Flat Elementary School	Rail Road Flat Elementary School Railroad Flat Rd Rail Road Flat	yes
Play Ground K-6	Rail Road Flat Elementary School	Rail Road Flat Elementary School Railroad Flat Rd Rail Road Flat	yes
Outdoor Basketball	Rail Road Flat Elementary School	Rail Road Flat Elementary School Railroad Flat Rd Rail Road Flat	yes
Community Hall	Rail Road Flat	Rail Road Flat Elementary School Railroad Flat Rd Rail Road Flat	no
Community Hall	Glencoe	American Legion Calaveras Post 376 Upper Doray Rd Glencoe	yes
Little League Ball Field	Mnt Rnch Community Park	Mnt Rnch Rd Mnt Rnch	no
Outdoor Basketball	Mnt Rnch Community Park	Mnt Rnch Rd Mnt Rnch	no
Playground	Mnt Rnch Community Park	Mnt Rnch Rd	no
Drop-in Center	Mountain Ranch	Mnt Rnch	no

Water Recreation	Camanche/Pardee Reservoirs	East Bay MUD 5883 East Camanche Pkwy Campo Seco	no
Pedestrian /Equestrian Trails	Camanche/Pardee Reservoirs	East Bay Municipal Utility District 5883 East Camanche Pkwy Campo Seco	no
baseball field	Mokelumne Hill	Hobbs Field MH Veterans Memorial Lafayette Street	yes
horse arena	Mokelumne Hill	MH Veterans Memorial Lafayette Street	yes
2 tennis courts	Mokelumne Hill	Barry's Courts MH Veterans Memorial Lafayette Street	yes
Town events park	Mokelumne Hill	Shutter Tree Park MH Veterans Memorial Main and Center Streets	yes
Meeting Hall	Mokelumne Hill	MH Veterans Memorial Main and Lafayette Streets	yes
Theatre	Mokelumne Hill	MH Veterans Memorial Main and Lafayette Streets	yes
Kitchen facilities	Mokelumne Hill	MH Veterans Memorial Main and Lafayette Streets	yes
Public Library	Mokelumne Hill	MH Branch Library Main Street	yes
Computers	Mokelumne Hill	MH Branch Library Main Street	yes
meeting room	Mokelumne Hill	MH Branch Library Main Street	yes
History Archive and Displays	Mokelumne Hill	MH Branch Library Main Street	no
All Purpose Room/Gymnasium	Mokelumne Hill	MH Elementary School Highway 26	yes
Grass Practice Field	Mokelumne Hill	MH Elementary School Highway 26	yes
Play Equipment K-6	Mokelumne Hill	MH Elementary School Highway 26	yes
Outdoor Basketball Hoops	Mokelumne Hill	MH Elementary School Highway 26	yes
<b>District 4</b>			
Angels Pool	Tryon Park, Angels Camp	Booster Way Hwy 4 Angels Camp	yes
Outdoor Volleyball Court	Tryon Park, Angels Camp	Booster Way Hwy 4 Angels Camp	yes
Open Park	Tryon Park, Angels Camp	Booster Way Hwy 4 Angels Camp	yes
Baseball Fields	Frogtown Baseball Diamonds	Gun & Club Rd Angels Camp	yes

Murphys Public Tennis Courts	Murphys Public Tennis Courts	School St Murphys	yes
Murphys Pool	Murphys Pool	Church St Murphys	yes
Open Park, Playground	Utica Park, Angels Camp	Utica Lane Angels Camp	yes
Open Park, Playground	Gateway Park, Angels Camp	Greenhorn Creek Rd Angels Camp	yes
Open Park, Playground	Murphys Community Park	Algiers St, Murphys	yes
Football & Soccer Practice fields	Copello Park	Copello Dr, Angels Camp	no
Softball Fields	Copello Park	Copello Dr Angels Camp	no
Soccer Fields	Feeney Park	Pennsylvania Gulch Rd Murphys	no
Baseball Fields	Feeney Park	Pennsylvania Gulch Rd Murphys	no
Skate Park	Feeney Park	Pennsylvania Gulch Rd Murphys	no
Open Park	Feeney Park	Pennsylvania Gulch Rd Murphys	no
Natural Bridges Trail	Natural Bridges Trail	Parrotts Ferry Rd Vallecito	unknown
New Melones Reservoir	New Melones Reservoir	Glory Hole Rd Angels Camp	yes
Soccer Field	Michelson Elementary School	Pennsylvania Gulch Rd Murphys	yes
Baseball field	Michelson Elementary School	Pennsylvania Gulch Rd Murphys	yes
Open Play Area, Playground	Michelson Elementary School	Pennsylvania Gulch Rd Murphys	yes
Soccer Field	Mark Twain Elementary School	646 Stanislaus Angels Camp	yes
Baseball field	Mark Twain Elementary School	646 Stanislaus Angels Camp	yes
Gymnasium	Mark Twain Elementary School	646 Stanislaus Angels Camp	yes
Public Tennis Courts	Bret Harte High School	364 Murphys Grade Rd Angels Camp	yes
Public Basketball Courts	Bret Harte High School	364 Murphys Grade Rd Angels Camp	yes
Gymnasium	Bret Harte High School	364 Murphys Grade Rd Angels Camp	yes
Football Field	Bret Harte High School	364 Murphys Grade Rd Angels Camp	yes
<b>District 5</b>			

Multi-Purpose Room	Copperopolis Elementary School	Mark Twain Union School District Offices 217 School Street Copperopolis, CA 95228	
Blackcreek Park	Copper Cove Lake Tulloch HOA	90 Blackcreek Drive Copperopolis, CA 95228	no
Saddle Creek Golf Resort	Limited to members and guests or approval/sponsor by corporation	Copperopolis	no
Outcast Hall	Poker Flat Lake Tulloch HOA (Limited to members and guests)	Copperopolis	no

**Table 3. RECREATION FACILITIES EXPENSES**

FACILITY	LOCATION	INSURANCE	ELECTRICITY	WATER	TRASH	MOWING	REPAIRS	TOTAL
<b>District 1</b>								
Skatepark, horsehoes, playground, kitchen, barbecue, restrooms, gazebo	Turner Park 287 Treat Avenue San Andreas	\$1,056	\$2,167	\$2,015		\$600	\$500	\$6,338
Sportsfields	Community Park 999 Park Drive San Andreas	\$1,056	\$1,945	\$800	\$300	\$600	\$1,500	\$6,201
Hall	24 Churchill St San Andreas	\$1,056	\$1,025	\$255	\$600	\$600	\$500	\$4,036
Lake, campgrounds, trails, marina, tennis courts, basketball courts, volleyball courts, arcade	Lake Camanche South Shore P.O. Box 206 Burson	\$178,000	\$141,000		\$104,880	\$40,000	\$240,000	\$703,880
Reservoir, campgrounds, swimming pool, barbecue, trails, marina	Pardee Rec Area 4900 Stoney Creek Road Ione							
Trails (21 miles in the Sierra Foothills)	Moke Watershed Campo Seco						\$97,700	\$97,700
Baseball, soccer and softball fields, barbeque, kitchen, snack bar, picnic area, gazebo, basketball hoop, bathrooms, playground, trails	Jenny Lind Vet Mem Park Daphne Road Valley Springs							
Hall	Jenny Lind Vet Mem Hall 189 Pine Street Valley Springs	\$16,700	\$14,150			\$35,500	\$13,900	\$80,250
Marina, campgrounds, trails, restrooms, parking	New Hogan Lake 2713 Hogan Dam Road Valley Springs							
Senior Center Meeting rooms	956 Mountain Ranch Road San Andreas							
Teen Center	24 Churchill St San Andreas							
Library Meeting rooms	San Andreas Library 891 Mountain Ranch Rd San Andreas							

Library Meeting rooms	Valley Springs Library 240 Pine Street Valley Springs				
Meeting rooms	Mark Twain St. Joseph's Hospital 768 Mountain Ranch Road San Andreas				
Golf course	La Contenta PO Box 249 1653 Highway 26 Valley Springs				
RV Park and Campground	1925 Gold Strike Road Box 658 San Andreas				
Historical Museum	Calaveras County 30 N. Main Street San Andreas				
Museum	Red Barn Government Ctr Mountain Ranch Road San Andreas	\$3,757	\$1,601	\$302	\$5,660
Teen Center	201 Pine Street Valley Springs				
Art Gallery	Calaveras County Arts Council 22 North Main St San Andreas	\$3,420			\$3,420
Pool, track, tennis courts, 2 softball, baseball fields, 2 gymnasiums	Calaveras High School P.O. Box 607 San Andreas				
Fields, gymnasium	Toyon Middle School 3412 Double Springs Rd. Valley Springs				
Two softball fields	Claypits Valley Springs				
Softball soccer field combo	Valley Springs Elementary School 240 Pine Street Valley Springs				
<b>District 2</b>					
Open space	Mokelumne & Calaveras Watersheds BLM Folsom Field Office 63 Natoma Street Folsom				

Open space	Mokelumne Watershed Stanislaus National Forest PO Box 500 Hathaway Pines
Little League Ball Field	WP Elementary School 54 Bald Mountain Road West Point
All Purpose Room /Gymnasium	WP Elementary School 54 Bald Mountain Road West Point
Outdoor Basketball	WP Elementary School 54 Bald Mountain Road West Point
Play Ground K-6	WP Elementary School 54 Bald Mountain Road West Point
Library	West Point Branch Library 291 Main St West Point
Computers	West Point Branch Library 291 Main St West Point
Drop-in Center	Blue Mnt Coalition for Youth Main St West Point
Blue Mountain Theater	Blue Mountain Players Main Street West Point
Hall	West Point Benefit Club 22283 Hwy 26 West Point
Hall	Vet Mem District 22273 Hwy 26 West Point
Hall	Veterans of Foreign Wars Spink Road West Point
Rebekah Lodge	Main Street West Point
Little League Ball Field	RRF Elementary School Rail Road Flat

All Purpose Room & Gymnasium	RRF Elementary School Railroad Flat Rd Rail Road Flat								
Play Ground K-6	RRF Elementary School Railroad Flat Rd Rail Road Flat								
Little League Ball Field	RRF Elementary School Railroad Flat Rd Rail Road Flat								
Hall	RRF Community Club Railroad Flat Rd Rail Road Flat								
Hall	American Legion Calaveras Post 376 Upper Dorrway Road Glencoe								
Little League Ball Field	Mnt Rnch Community Park Mnt Rnch Road Mnt Rnch								
Outdoor Basketball	Mnt Rnch Community Park Mnt Rnch Rd Mnt Rnch								
Playground	Mnt Rnch Community Park Mnt Rnch Rd Mnt Rnch								
Drop-in Center	Mnt Rnch Community Park Mnt Rnch Rd Mnt Rnch								
Water Recreation	East Bay MUD 5883 East Camanche Pkwy Campo Seco								
Pedestrian & Equestrian Trails	Camanche/Parde Reservoirs East Bay MUD 5883 East Camanche Pkwy Campo Seco								
Computers	MH Branch Library Main Street								
Meeting room	MH Branch Library Main Street								
All Purpose Room/Gymnasium	MH Elementary School Highway 26								
Hobbs Field: baseball	8615 Lafayette St Mokelumne Hill	\$265	\$390	\$1,750	\$90	\$2,000	\$500	\$4,995	

Horse arena	Lafayette Street Mokelumne Hill	\$155	\$140	\$175	\$50	\$200	\$2,000	\$2,720
Barry's Two Tennis Courts	Lafayette Street Mokelumne Hill	\$440	\$124	\$175	\$50	\$400	\$2,000	\$3,189
Shutter Tree Park	Main & Center St Mokelumne Hill	\$265	\$200	\$530	\$250	\$1,240	\$300	\$2,785
Hall	Main & Lafayette Streets Mokelumne Hill		\$2,000	\$460		\$3,840		\$6,300
Hall: meetings, theatre, kitchen	Main & Lafayette Streets Mokelumne Hill	\$1,080	\$545	\$250	\$400	\$0	\$500	\$2,775
Library & History Archives	MH Branch Library Main Street Mokelumne Hill							
1-6 Grade School: gymnasium, grass practice field, play equipment, outdoor basketball hoops	MH Elementary School Highway 26 Mokelumne Hill							
<b>District 3</b>								
White Pines Park	White Pines Lake Blagen Rd White Pines	\$4,100	\$175	\$1,650	\$1,350	\$500	\$6,500	\$14,275
Independence Hall	Blagen Rd White Pines	\$11,700	\$8,320	\$3,000	\$1,200	\$2,100	\$3,900	\$30,220
Courtwright Emerson Ball Park	White Pines Lake Blagen Rd White Pines	\$2,000	\$250		\$250		\$500	\$3,000
<b>District 4</b>								
Angels Pool	Tryon Park Booster Way & Hwy 4 Angels Camp							
Outdoor Volleyball Court	Tryon Park Booster Way & Hwy 4 Angels Camp							
Open Park	Tryon Park Booster Way & Hwy 4 Angels Camp							
Baseball Fields	Gun Club Rd Frogtown							
Murphys Public Tennis Courts	School St Murphys							
Murphys Pool	Church St Murphys							
Open Park, Playground	Utica Park Utica Lane Angels Camp							
Open Park, Playground	Gateway Park Greenhorn Creek Road Angels Camp							

Open Park, Playground	Murphys Community Park Algiers St Murphys	\$5,000	\$4,400	\$20,621	\$30,021
Football & Soccer Practice fields	Copello Park Copello Dr Angels Camp				
Softball Fields	Copello Park Copello Dr Angels Camp				
Soccer Fields	Feeney Park Pennsylvania Gulch Rd Murphys				
Baseball Fields	Feeney Park Pennsylvania Gulch Rd Murphys				
Skate Park	Feeney Park Pennsylvania Gulch Rd Murphys				
Open Park	Feeney Park Pennsylvania Gulch Rd Murphys				
Natural Bridges Trail	Parrotts Ferry Rd Vallecito				
New Melones Reservoir	Glory Hole Rd Angels Camp				
Soccer Field	Michelson Elementary School Pennsylvania Gulch Rd Murphys				
Baseball field	Michelson Elementary School Pennsylvania Gulch Rd Murphys				
Open Play Area, Playground	Michelson Elementary School Pennsylvania Gulch Rd Murphys				
Soccer Field	Mark Twain Elementary School 646 Stanislaus Angels Camp				
Baseball field	Mark Twain Elementary School 646 Stanislaus Angels Camp				

Gymnasium	Mark Twain Elementary School 646 Stanislaus Angels Camp
Public Tennis Courts	Bret Harte High School 364 Murphys Grade Rd Angels Camp
Public Basketball Courts	Bret Harte High School 364 Murphys Grade Rd Angels Camp
Gymnasium	Bret Harte High School 364 Murphys Grade Rd Angels Camp
Football Field	Bret Harte High School 364 Murphys Grade Rd Angels Camp
<b>District 5</b>	
Multi-Purpose Room	Copperopolis Elementary School 217 School St Copperopolis
Blackcreek Park	Copper Cove Lake Tulloch HOA 90 Blackcreek Dr Copperopolis
Saddle Creek Golf Resort	Copperopolis
Outcast Hall	Polker Flat Lake Tulloch HOA Copperopolis
<b>Total</b>	<b>\$230,050      \$174,032      \$15,460      \$109,420      \$87,580      \$391,223      \$1,007,765</b>