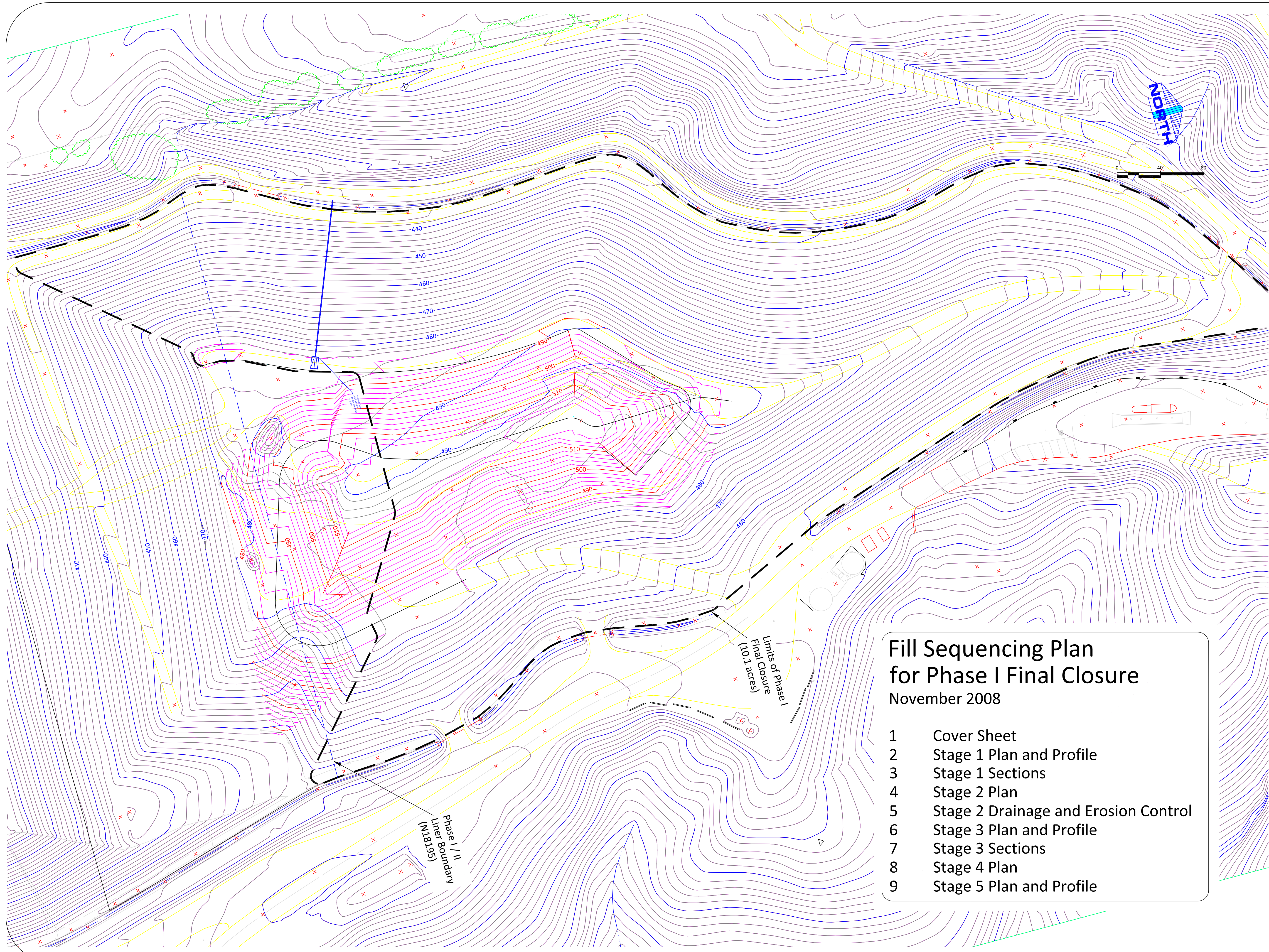


final closure grades.dwg



General Notes

Existing grades are shown as blue contours.
Proposed grades reference top of 1' thick interim earth cover and are shown as red contours.

Topographic mapping provided by:
KELLOGG AERIAL SURVEYS
4200 N. FREEWAY BLVD, SUITE 3
SACRAMENTO, CA 95834
PH: 916/649-0557 FAX: 916/649-0559
CONTOUR INTERVAL: 1'
PHOTO DATE: 8-4-08
PHOTO SCALE: 1:3000
SURVEY GROUND CONTROL PROVIDED BY: KASL Engineers
* MAP MUST BE PROPERLY FIELD CHECKED AND VERIFIED BEFORE USE, ALTERATIONS SERVICED PROMPTLY.
* DASHED LINES MAY NOT MEET MAPPING ACCURACY STANDARDS.
* SHOWN CONTROL POINT ELEVATIONS ARE AT GROUND LEVEL UNLESS OTHERWISE INDICATED.

No.	Revision/Issue	Date

Firm Name and Address
Veras Resources, Inc.
Post Office Box 2753
Murphys, CA 95247
209.728.0253
www.VerasResources.com

Project Name and Address
**Fill Sequencing
Phase I Final Closure
Rock Creek Landfill
Calaveras County, CA**

Project Fill Sequencing Plan	Sheet 1
Date November 24, 2008	
Scale As noted	

Fill Sequencing Plan for Phase I Final Closure November 2008

- 1 Cover Sheet
- 2 Stage 1 Plan and Profile
- 3 Stage 1 Sections
- 4 Stage 2 Plan
- 5 Stage 2 Drainage and Erosion Control
- 6 Stage 3 Plan and Profile
- 7 Stage 3 Sections
- 8 Stage 4 Plan
- 9 Stage 5 Plan and Profile