

# ROCK CREEK SOLID WASTE FACILITY FACILITY DEVELOPMENT PLAN

CALAVERAS COUNTY, CALIFORNIA

MARCH 1995

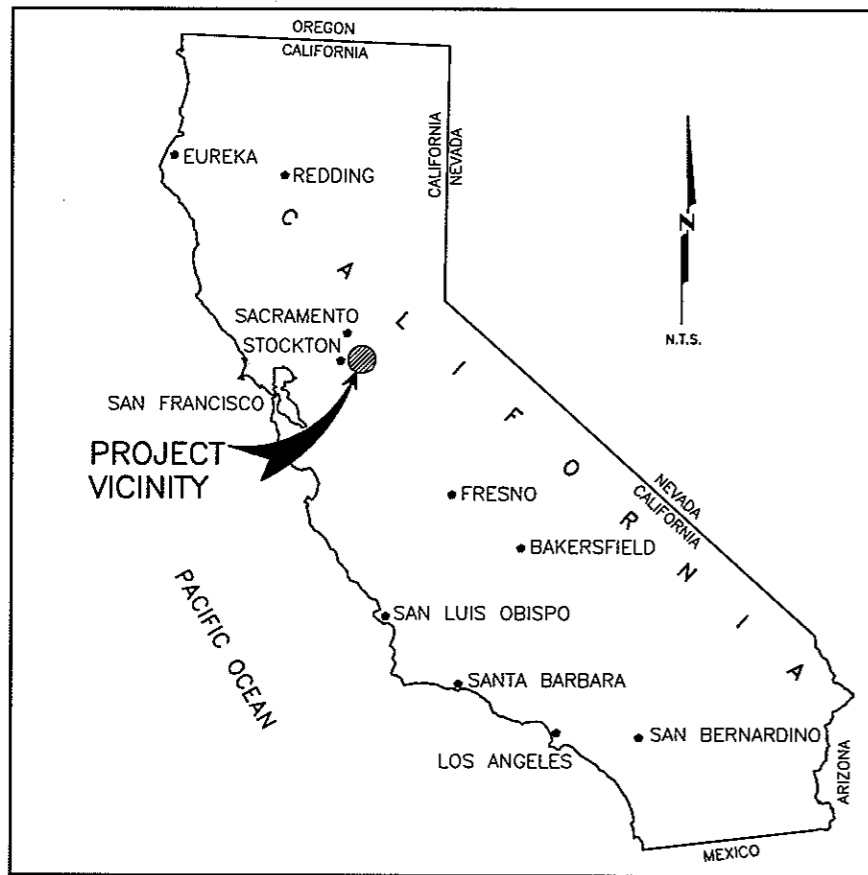
## ENGINEER



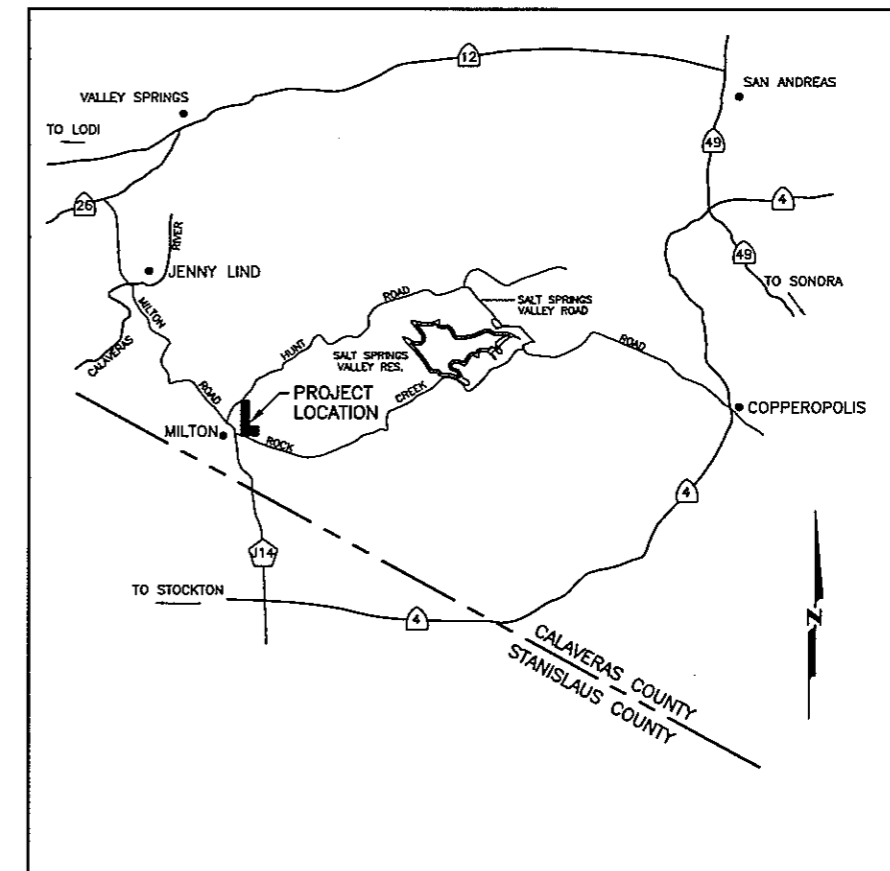
**HARDING LAWSON ASSOCIATES**  
3247 RAMOS CIRCLE  
SACRAMENTO, CALIFORNIA 95827  
PHONE (916) 364-0793

## CLIENT

**CALAVERAS COUNTY**  
DEPARTMENT OF PUBLIC WORKS  
891 MOUNTAIN RANCH ROAD  
SAN ANDREAS, CALIFORNIA 95249



VICINITY MAP  
NOT TO SCALE



LOCATION MAP  
NOT TO SCALE

## SHEET INDEX

DRAWING NUMBER	DESCRIPTION
C1	TITLE SHEET
C2	NOTES, LEGEND AND ABBREVIATIONS
C3	SITE PLAN
C4	MONITORING PLAN
C5	FINAL GRADING PLAN
C6	BASE LINER PLAN
C7	BASE LINER PLAN - PHASE II
C8	CLASS II IMPOUNDMENT
C9	LEACHATE TRANSFER PIPE - PLAN AND PROFILE
C10	PUBLIC UNLOADING AREA
C11	FILL SEQUENCING PLAN - PHASE II
C12	CLASS II IMPOUNDMENT SECTIONS AND DETAILS
C13	CROSS SECTIONS
C14	CROSS SECTIONS - PHASE II
C15	SECTIONS AND DETAILS
C16	SECTIONS AND DETAILS
C17	SECTIONS AND DETAILS

95 PERCENT SUBMITTAL  
NOT FOR CONSTRUCTION  
DATE: 03-10-95



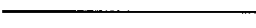

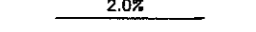

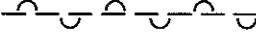

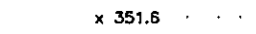

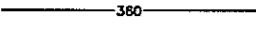
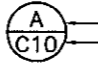
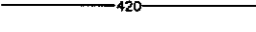
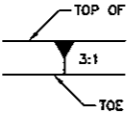
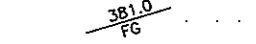
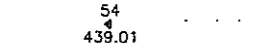
**GENERAL NOTES:**

1. CALAVERAS COUNTY, CALIFORNIA, DEPARTMENT OF PUBLIC WORKS PROVIDED MAPPING PERFORMED BY KELLOGG AERIAL SURVEYS AT 1"=200' SCALE AND 4-FOOT CONTOUR INTERVAL TO HARDING LAWSON ASSOCIATES (HLA). THE PHOTO MAPPING DATE WAS FEBRUARY 23, 1994. MAPPING DOES NOT REPRESENT EXISTING TOPOGRAPHY FOR PHASE I AND STOCKPILE AREAS. THE MAPPING IS REFERRED TO AS "THE BASE MAP TOPOGRAPHY".
2. ITEMS DESIGNATED AS PROPOSED MAY BE CONSTRUCTED WITHIN FIVE YEARS AND BEYOND. ITEMS DESIGNATED AS FUTURE ARE PLANNED FOR CONSTRUCTION BEYOND FIVE YEARS.
3. LIMITS DESIGNATED AS "OPERATIONAL" CORRESPOND TO MAXIMUM VERTICAL FILL EXTENT ASSOCIATED WITH THE DESIGNATED PHASE.
4. ADDITIONAL NOTES AND LEGEND ENTRIES ARE INCLUDED ON OTHER DRAWINGS WITHIN THE SET.


**ABBREVIATIONS**

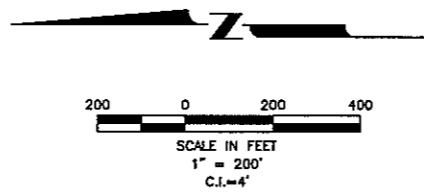
ABAND. . . . .	ABANDONED	FL . . . . .	FLOW LINE
A.B. . . . .	AGGREGATE BASE	FT. . . . .	FOOT/FEET
AC. . . . .	ACRES	G.B. . . . .	GRADE BREAK
A.C. . . . .	ASPHALT CONCRETE	GR. . . . .	GROUND
AGGR. . . . .	AGGREGATE	HDPE. . . . .	HIGH DENSITY POLYETHYLENE
APPROX. . . . .	APPROXIMATE	HORIZ. . . . .	HORIZONTAL
ASPH. . . . .	ASPHALT	H.D. . . . .	HORIZONTAL DISTANCE
⊕ . . . . .	AT	I.D. . . . .	INSIDE DIAMETER
B.C. . . . .	BEGIN CURVE	I.E. . . . .	INVERT ELEVATION
B.H.C. . . . .	BEGIN HORIZONTAL CURVE	IN. . . . .	INCH
BLDG. . . . .	BUILDING	INT. . . . .	INTERSECTION
B.M. . . . .	BENCH MARK	LCS . . . . .	LEACHATE COLLECTION SYSTEM
B.V.C. . . . .	BEGIN VERTICAL CURVE	L.F. . . . .	LINEAR FEET
CAP. . . . .	CAPACITY	MATL. . . . .	MATERIAL
CHD. . . . .	CHORD	MAX. . . . .	MAXIMUM
C.I. . . . .	CONTOUR INTERVAL	MH. . . . .	MANHOLE
C.L. OR $\epsilon$ . . . . .	CENTER LINE	MIN. . . . .	MINIMUM
C.M.P. . . . .	CORRUGATED METAL PIPE	MISC. . . . .	MISCELLANEOUS
C.O. . . . .	CLEAN OUT	N . . . . .	NORTH
CONC. . . . .	CONCRETE	NO. . . . .	NUMBER
CONST. . . . .	CONSTRUCT	N.T.S. . . . .	NOT TO SCALE
CONT. . . . .	CONTINUOUS	O.C. . . . .	ON CENTER
COR. . . . .	CORNER	O.D. . . . .	OUTSIDE DIAMETER
CPEP . . . . .	CORRUGATED POLYETHYLENE PIPE	OZ. . . . .	OUNCE
CP . . . . .	CONTROL POINT	P.C. . . . .	POINT OF CURVE
CTR. . . . .	CENTER	P.C.C. . . . .	PORTLAND CEMENT CONCRETE
CU. FT. OR C.F. . . . .	CUBIC FOOT	PERF. . . . .	PERFORATED
CU. IN. . . . .	CUBIC INCH	P.I. . . . .	POINT OF INTERSECTION
CU. YD OR C.Y. . . . .	CUBIC YARD	P . . . . .	PROPERTY LINE
C.V. . . . .	CHECK VALVE	P.P. . . . .	POWER POLE
D . . . . .	DEGREE OF CURVE	P.S.I. . . . .	POUNDS PER SQUARE INCH
DET. . . . .	DETAIL	P.T. . . . .	POINT OF TANGENT
D.I. . . . .	DROP INLET	P.U.E. . . . .	PUBLIC UTILITY EASEMENT
DIA. OR $\phi$ . . . . .	DIAMETER	P.V.I. . . . .	POINT OF VERTICAL INTERSECTION
DISCH. . . . .	DISCHARGE	R . . . . .	RADIUS
DIST. . . . .	DISTANCE	S . . . . .	SLOPE
DWG. . . . .	DRAWING	S.D. . . . .	STORM DRAIN
$\Delta$ . . . . .	DELTA (CENTRAL ANGLE)	S.D.R. . . . .	STANDARD DIMENSION RATIO
E . . . . .	EAST	SF. . . . .	SQUARE FEET/SQUARE FOOT
EA. . . . .	EACH	STA . . . . .	STATION
E.C. . . . .	END OF CURVE	STD. . . . .	STANDARD
E.H.C. . . . .	END HORIZONTAL CURVE	T.S. . . . .	TOE OF SLOPE
ELEV. . . . .	ELEVATION	TYP. . . . .	TYPICAL
E.P. . . . .	EDGE OF PAVEMENT	U.D. . . . .	UNDERDRAIN
E.V.C. . . . .	END OF VERTICAL CURVE	V . . . . .	VALVE
E.W. . . . .	EACH WAY	V.C. . . . .	VERTICAL CURVE
EX. OR EXIST. . . . .	EXISTING	VERT. . . . .	VERTICAL
F.G. . . . .	FINISH GRADE	W . . . . .	WATER
F.H. . . . .	FIRE HYDRANT	W/ . . . . .	WITH

**LEGEND**

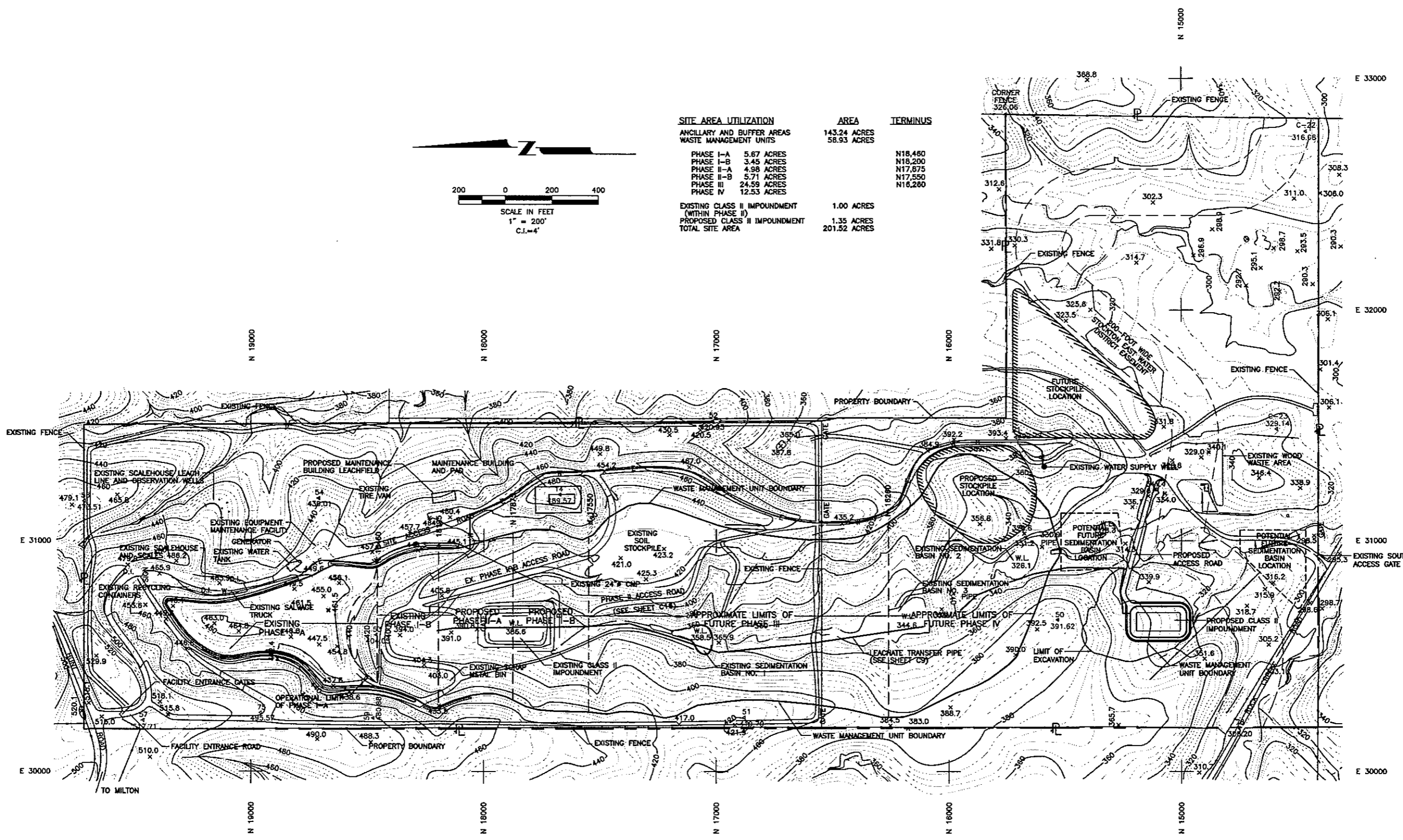
	PROPOSED/FUTURE FEATURES		VEGETATIVE LAYER
	BASE MAP FEATURES		FOUNDATION LAYER
	SLOPE INDICATOR		OPERATIONS LAYER
	GRADE BREAK		DRAINAGE LAYER
	BASE MAP TOPOGRAPHY SPOT ELEVATION		LOW PERMEABILITY LAYER ( $K \leq 1 \times 10^{-7} \text{CM/SEC}$ )
	BASE MAP TOPOGRAPHY CONTOUR ELEVATION		DETAIL OR SECTION NUMBER SHEET NUMBER WHERE DETAIL OR SECTION CAN BE FOUND
	PROPOSED FEATURE CONTOUR ELEVATION		SLOPE INDICATOR
	PROPOSED GRADE		
	EXISTING SURVEY MONUMENT		

95 PERCENT SUBMITTAL  
NOT FOR CONSTRUCTION  
DATE: 03-10-95

DRAWN: RLR		PROJECT NO.:	FILE NAME: DURANLA	 <b>Harding Lawson Associates</b> Engineering and Environmental Services 3247 Roman Circle Sacramento, California 95827 (916) 364-0793	<b>NOTES, LEGEND AND ABBREVIATIONS</b>	DRAWING: C2
ENGINEER: JWJ		SCALE:	NO SCALE			SHEET: 2 OF
CHECKED: JWJ		APPROVED:				REVISION NUMBER:
NO.	DATE	REVISIONS	BY			CHK



SITE AREA UTILIZATION		AREA	TERMINUS
ANCILLARY AND BUFFER AREAS		143.24 ACRES	
WASTE MANAGEMENT UNITS		58.93 ACRES	
PHASE I-A	5.67 ACRES		N18,480
PHASE I-B	3.45 ACRES		N18,200
PHASE II-A	4.98 ACRES		N17,875
PHASE II-B	5.71 ACRES		N17,550
PHASE III	24.59 ACRES		N16,280
PHASE IV	12.53 ACRES		N16,280
EXISTING CLASS II IMPOUNDMENT (WITHIN PHASE II)		1.00 ACRES	
PROPOSED CLASS II IMPOUNDMENT		1.35 ACRES	
TOTAL SITE AREA		201.52 ACRES	



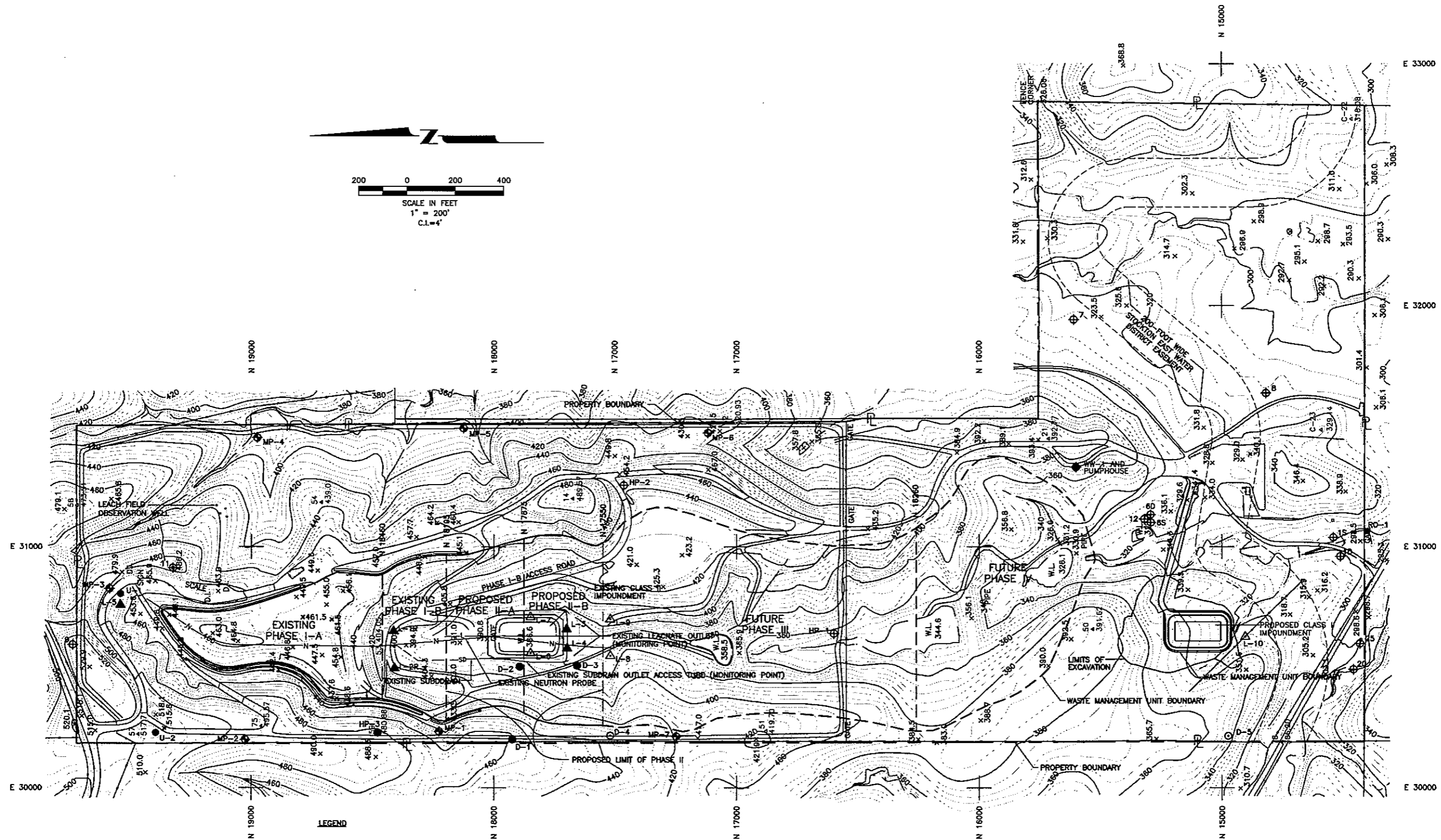
**SITE PLAN LEGEND**

	PROPERTY BOUNDARY
	APPROXIMATE WASTE MANAGEMENT UNIT BOUNDARY
	APPROXIMATE LOCATION OF EXISTING ELECTRICAL LINE
	APPROXIMATE LOCATION OF EXISTING WATER LINE

- NOTE:**
1. TOPOGRAPHIC INFORMATION PREPARED BY KELLOGG AERIAL SURVEYS. THE PHOTO DATE WAS FEBRUARY 23, 1994.
  2. ALL PROPERTY LINES SHOWN ARE APPROXIMATE AND ARE SUBJECT TO VERIFICATION BY A LICENSED LAND SURVEYOR.
  3. LOCATIONS OF EXISTING UTILITIES AND OTHER FACILITIES SHOWN ON THIS DRAWING ARE FROM BEST AVAILABLE INFORMATION, BUT ARE NOT GUARANTEED.
  4. PHASE I-B GRADES SHOWN ARE PRIOR TO 1994 LINER CONSTRUCTION. PHASE I-B DESIGN SUBGRADE ELEVATIONS ARE SHOWN ON DRAWING C6.

95 PERCENT SUBMITTAL  
 NOT FOR CONSTRUCTION  
 DATE: 03-10-95

	DRAWN: RLH,MAE	PROJECT NO.: 28018.2	FILE NAME: ROCKSITE.DWG		<b>Harding Lawson Associates</b> Engineering and Environmental Services 3247 Ramos Circle Sacramento, California 95827 (916) 364-0793	<b>ROCK CREEK SOLID WASTE FACILITY</b> <b>FACILITY DEVELOPMENT PLAN</b> CALAVERAS COUNTY DEPARTMENT OF PUBLIC WORKS 891 MOUNTAIN RANCH ROAD SAN ANDREAS, CALIFORNIA 95249	<b>SITE PLAN</b>	DRAWING: C3
	ENGINEER: RAW	SCALE: 1"=200'	APPROVED: [Signature]					SHEET: 3 OF 17
	CHECKED: GSL	DATE: 03-10-95	DATE:					REVISION NUMBER:
NO. DATE	REVISIONS	BY	CHK					DATE:



- LEGEND**
- U-1 EXISTING GROUNDWATER MONITORING WELL LOCATION
  - ▲ L-3 EXISTING VADOSE ZONE MONITORING LOCATION
  - ▲ L-6 PROPOSED LYSIMETER LOCATION
  - ◆ MP-1 PROPOSED LANDFILL GAS MONITORING PROBE LOCATION
  - D-4 PROPOSED GROUNDWATER MONITORING WELL
  - EXISTING OBSERVATION WELL
  - ⊕ 11 EXISTING PIEZOMETER
  - ◆ WW-1 EXISTING WATER SUPPLY WELL
  - RO-1 EXISTING SURFACE WATER SAMPLING LOCATION

- SD — EXISTING SUBDRAIN
- — — APPROXIMATE BOUNDARY OF EXISTING AND PROPOSED WASTE MANAGEMENT UNIT
- — — APPROXIMATE BOUNDARY OF FUTURE WASTE MANAGEMENT UNIT
- N — EXISTING NEUTRON PROBE ACCESS TUBING
- L — EXISTING LEACHATE PIPE
- ▲ 75 EXISTING SURVEY MONUMENT
- ▲ 495.57

**NOTE:**

1. TOPOGRAPHIC INFORMATION PREPARED BY KELLOGG AERIAL SURVEYS. THE PHOTO DATE WAS FEBRUARY 23, 1994.
2. ALL PROPERTY LINES SHOWN ARE APPROXIMATE AND ARE SUBJECT TO VERIFICATION BY A LICENSED LAND SURVEYOR.
3. LOCATIONS OF EXISTING UTILITIES AND OTHER FACILITIES SHOWN ON THIS DRAWING ARE FROM BEST AVAILABLE INFORMATION, BUT ARE NOT GUARANTEED.
4. PHASE I-B GRADES SHOWN ARE PRIOR TO 1994 LINER CONSTRUCTION. PHASE I-B DESIGN SUBGRADE ELEVATIONS ARE SHOWN ON DRAWING C8.

95 PERCENT SUBMITTAL  
 NOT FOR CONSTRUCTION  
 DATE: 03-10-95

NO.	DATE	REVISIONS	BY	CHK

DRAWN:	RLH, MAE	PROJECT NO.:	28018.2	FILE NAME:	ROCKMCIPI.DWG
ENGINEER:	RAW	SCALE:	1"=200'		
CHECKED:	GSL	APPROVED:			
DATE:	03-10-95	DATE:			



Harding Lawson Associates  
 Engineering and Environmental Services  
 3247 Ramos Circle  
 Sacramento, California 95827  
 (916) 364-0793

**ROCK CREEK SOLID WASTE FACILITY  
 FACILITY DEVELOPMENT PLAN**

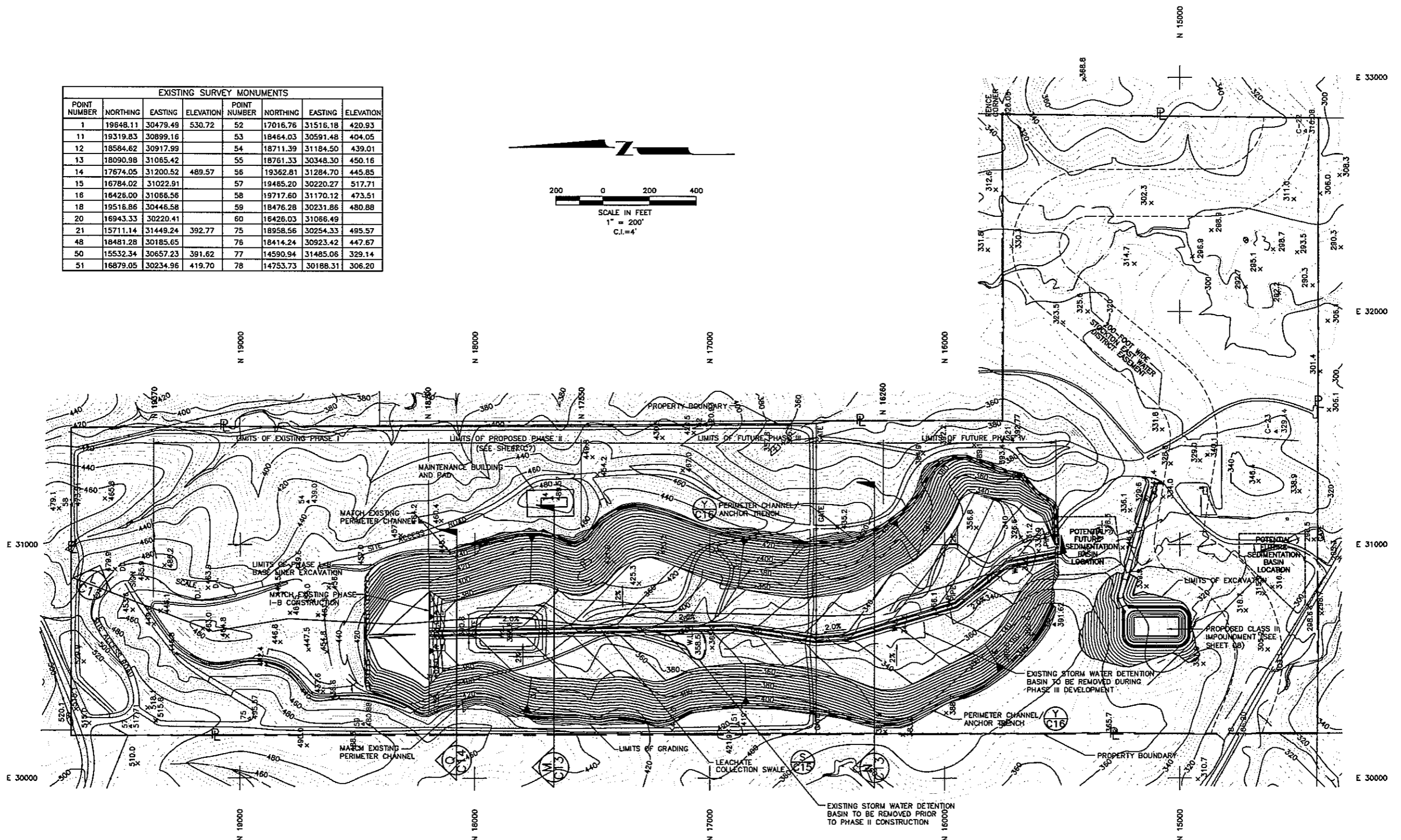
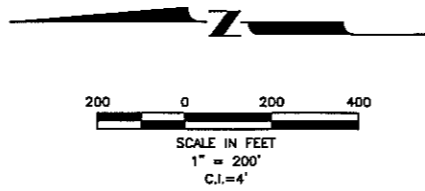
CALAVERAS COUNTY  
 DEPARTMENT OF PUBLIC WORKS  
 891 MOUNTAIN RANCH ROAD  
 SAN ANDREAS, CALIFORNIA 95249

**MONITORING PLAN**

DRAWING:	C4
SHEET:	4 OF 17
REVISION NUMBER:	
DATE:	



EXISTING SURVEY MONUMENTS							
POINT NUMBER	NORTHING	EASTING	ELEVATION	POINT NUMBER	NORTHING	EASTING	ELEVATION
1	19648.11	30479.49	530.72	52	17016.76	31516.18	420.93
11	19319.83	30899.16		53	18464.03	30591.48	404.05
12	18584.62	30917.99		54	18711.39	31184.50	439.01
13	18090.98	31065.42		55	18761.33	30348.30	450.16
14	17674.05	31200.52	489.57	56	19362.81	31284.70	445.85
15	16784.02	31022.91		57	19485.20	30220.27	517.71
16	16426.00	31066.56		58	19717.60	31170.12	473.51
18	19518.66	30446.58		59	18476.28	30231.86	480.88
20	16943.33	30220.41		60	16426.03	31066.49	
21	15711.14	31449.24	392.77	75	18958.56	30254.33	495.57
48	18481.28	30185.65		76	18414.24	30923.42	447.67
50	15532.34	30657.23	391.62	77	14590.94	31485.06	329.14
51	16879.05	30234.96	419.70	78	14753.73	30188.31	306.20



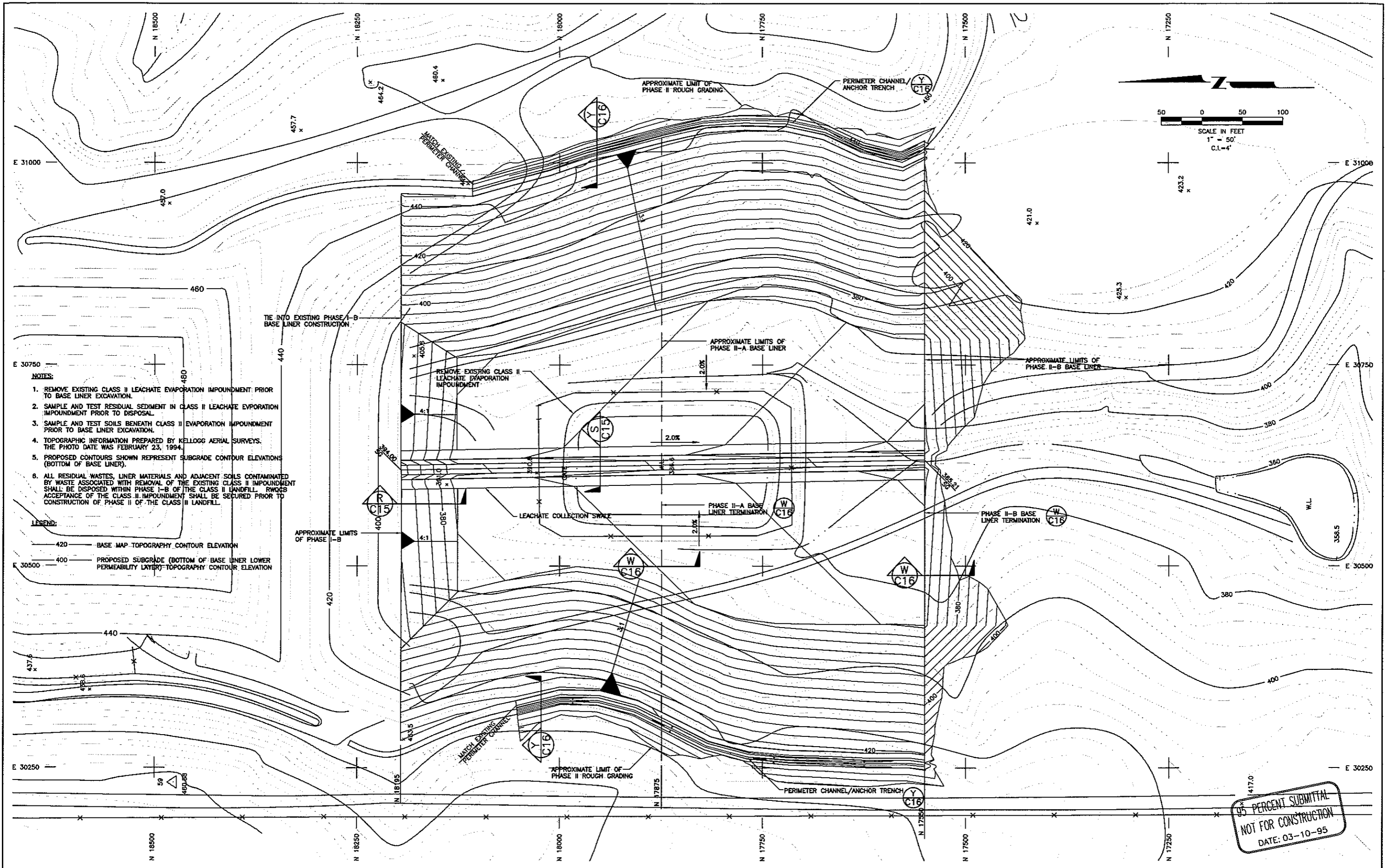
**LEGEND**

	480	EXISTING BASE TOPOGRAPHY
	480	PROPOSED TOP OF SUBGRADE TOPOGRAPHY

- NOTES:**
- TOPOGRAPHIC INFORMATION PREPARED BY KELLOGG AERIAL SURVEYS. THE PHOTO DATE WAS FEBRUARY 23, 1994.
  - ALL PROPERTY LINES SHOWN WITHIN PHASE I-B THROUGH PHASE IV ARE APPROXIMATE AND ARE SUBJECT TO VERIFICATION BY A LICENSED LAND SURVEYOR.
  - CONTOURS SHOWN REPRESENT TOP OF SUBGRADE (BOTTOM OF BASE LINER LOW PERMEABILITY LAYER).
  - PHASES II THROUGH IV MAY BE DEVELOPED IN SUB-PHASES.
  - CONTOURS SHOWN FOR THE CLASS II IMPOUNDMENT REPRESENT FINISH GRADE OF IMPOUNDMENT.
  - ALL RESIDUAL WASTES, LINER MATERIALS AND ADJACENT SOILS CONTAMINATED BY WASTE ASSOCIATED WITH REMOVAL OF THE EXISTING CLASS II IMPOUNDMENT SHALL BE DISPOSED WITHIN PHASE I-B OF THE CLASS II LANDFILL. RWQCB ACCEPTANCE OF THE CLASS II IMPOUNDMENT SHALL BE SECURED PRIOR TO CONSTRUCTION OF PHASE II OF THE CLASS II LANDFILL.

**95 PERCENT SUBMITTAL  
NOT FOR CONSTRUCTION**  
 DATE: 03-10-95

	DRAWN: RLH	PROJECT NO.: 28018.2	FILE NAME: ROCKBLP.DWG		<b>Harding Lawson Associates</b> Engineering and Environmental Services 3247 Ramos Circle Sacramento, California 95827 (916) 384-0793	<b>ROCK CREEK SOLID WASTE FACILITY FACILITY DEVELOPMENT PLAN</b> CALAVERAS COUNTY DEPARTMENT OF PUBLIC WORKS 891 MOUNTAIN RANCH ROAD SAN ANDREAS, CALIFORNIA 95249	<b>BASE LINER PLAN</b>	DRAWING: C6
	ENGINEER: RAW	SCALE: 1"=200'						SHEET: 6 OF 17
	CHECKED: GSL	APPROVED:						REVISION NUMBER:
NO. DATE	REVISIONS	DATE: 03-10-95	DATE:					DATE:

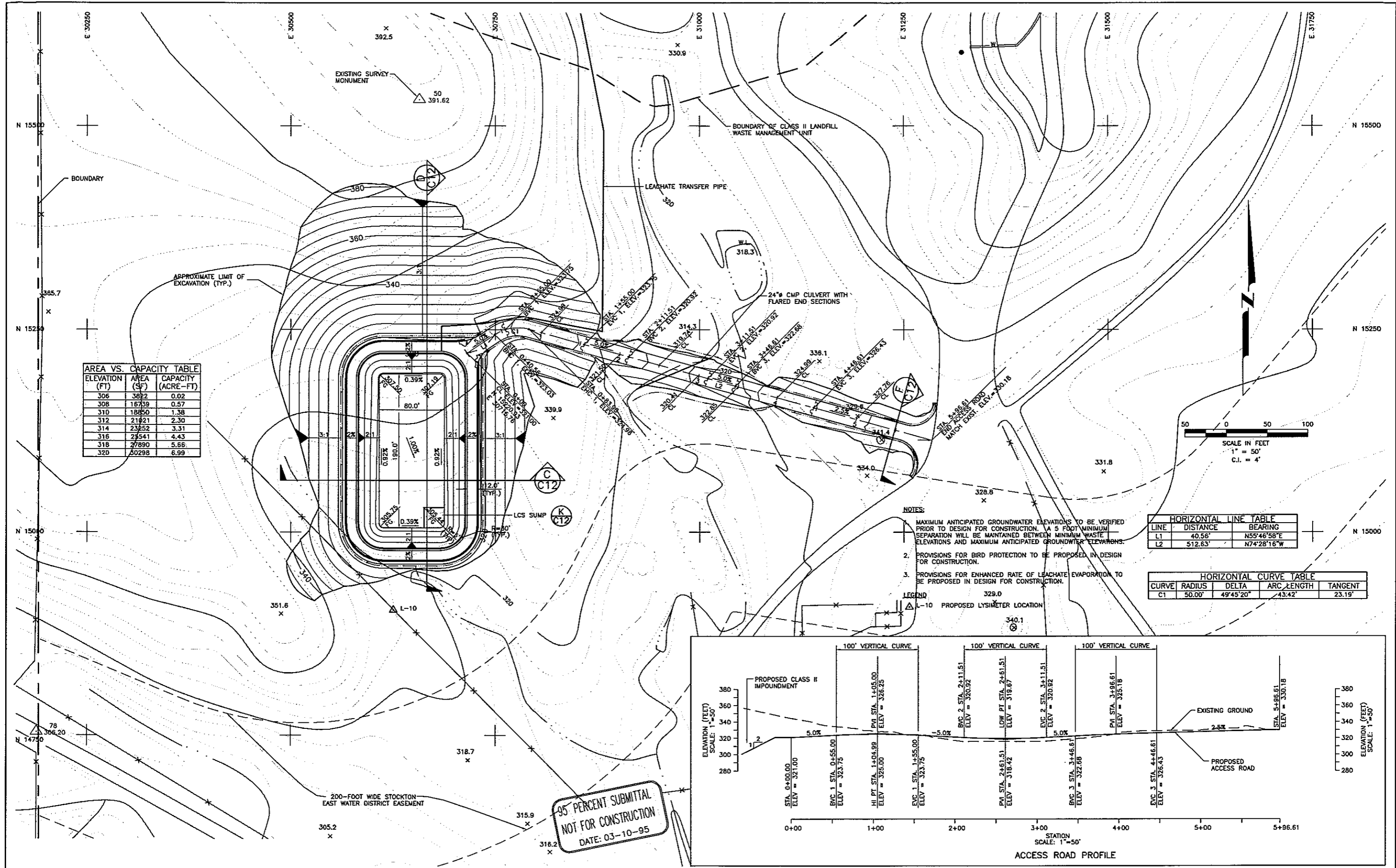


- NOTES:**
1. REMOVE EXISTING CLASS II LEACHATE EVAPORATION IMPOUNDMENT PRIOR TO BASE LINER EXCAVATION.
  2. SAMPLE AND TEST RESIDUAL SEDIMENT IN CLASS II LEACHATE EVAPORATION IMPOUNDMENT PRIOR TO DISPOSAL.
  3. SAMPLE AND TEST SOILS BENEATH CLASS II EVAPORATION IMPOUNDMENT PRIOR TO BASE LINER EXCAVATION.
  4. TOPOGRAPHIC INFORMATION PREPARED BY KELLOGG AERIAL SURVEYS. THE PHOTO DATE WAS FEBRUARY 23, 1994.
  5. PROPOSED CONTOURS SHOWN REPRESENT SUBGRADE CONTOUR ELEVATIONS (BOTTOM OF BASE LINER).
  6. ALL RESIDUAL WASTES, LINER MATERIALS AND ADJACENT SOILS CONTAMINATED BY WASTE ASSOCIATED WITH REMOVAL OF THE EXISTING CLASS II IMPOUNDMENT SHALL BE DISPOSED WITHIN PHASE I-B OF THE CLASS II LANDFILL. RWQCB ACCEPTANCE OF THE CLASS II IMPOUNDMENT SHALL BE SECURED PRIOR TO CONSTRUCTION OF PHASE II OF THE CLASS II LANDFILL.

- LEGEND:**
- 420 — BASE MAP TOPOGRAPHY CONTOUR ELEVATION
  - 400 — PROPOSED SUBGRADE (BOTTOM OF BASE LINER LOWER PERMEABILITY LAYER) TOPOGRAPHY CONTOUR ELEVATION

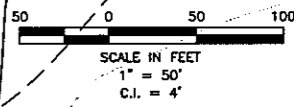
95 PERCENT SUBMITTAL  
 NOT FOR CONSTRUCTION  
 DATE: 03-10-95

DRAWN: RLH		PROJECT NO.: 28018.2	FILE NAME: ROCKBLP2.DWG		<b>Harding Lawson Associates</b> Engineering and Environmental Services 3247 Romas Circle Sacramento, California 95827 (916) 364-0793	<b>ROCK CREEK SOLID WASTE FACILITY</b> FACILITY DEVELOPMENT PLAN CALAVERAS COUNTY DEPARTMENT OF PUBLIC WORKS 891 MOUNTAIN RANCH ROAD SAN ANDREAS, CALIFORNIA 95249	<b>BASE LINER PLAN</b> PHASE II	DRAWING: C7
ENGINEER: RAW		SCALE: 1"=50'	APPROVED:					SHEET: 7 OF 17
CHECKED: GSL		DATE: 03-10-95	DATE:	REVISION NUMBER:	DATE:			
NO.	DATE	REVISIONS	BY	CHK				



**AREA VS. CAPACITY TABLE**

ELEVATION (FT)	AREA (SF)	CAPACITY (ACRE-FT)
306	3822	0.02
308	16739	0.57
310	18850	1.58
312	21021	2.30
314	23252	3.31
316	25541	4.43
318	27890	5.66
320	30298	6.99



**HORIZONTAL LINE TABLE**

LINE	DISTANCE	BEARING
L1	40.56'	N55°46'58"E
L2	512.63'	N74°28'16"W

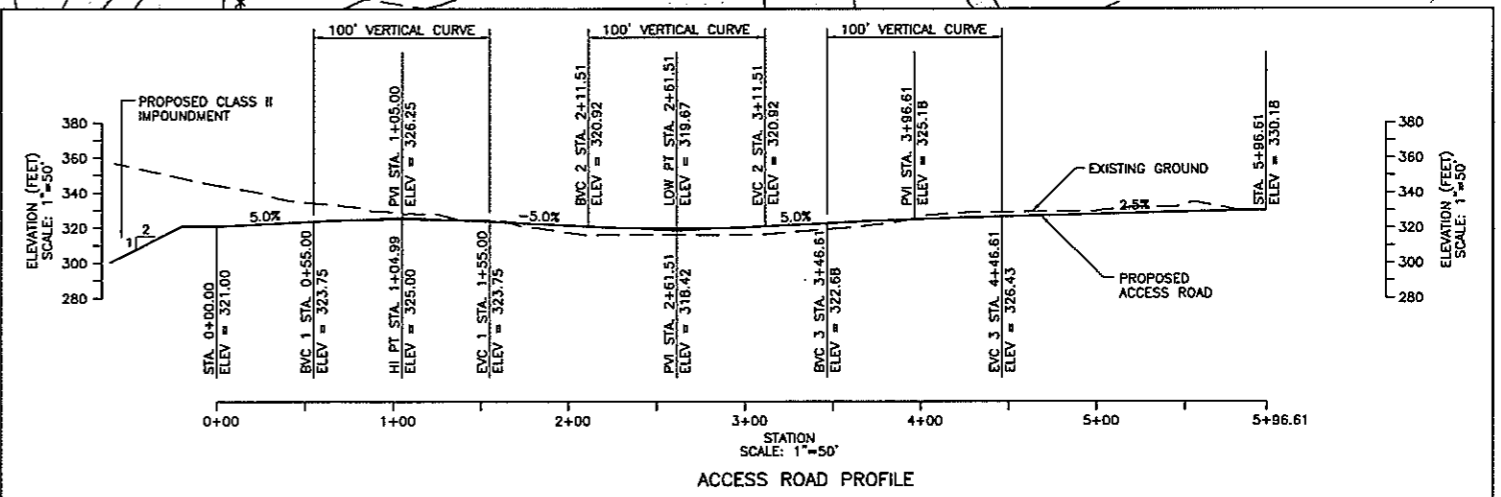
**HORIZONTAL CURVE TABLE**

CURVE	RADIUS	DELTA	ARC LENGTH	TANGENT
C1	50.00'	49°45'20"	43.42'	23.19'

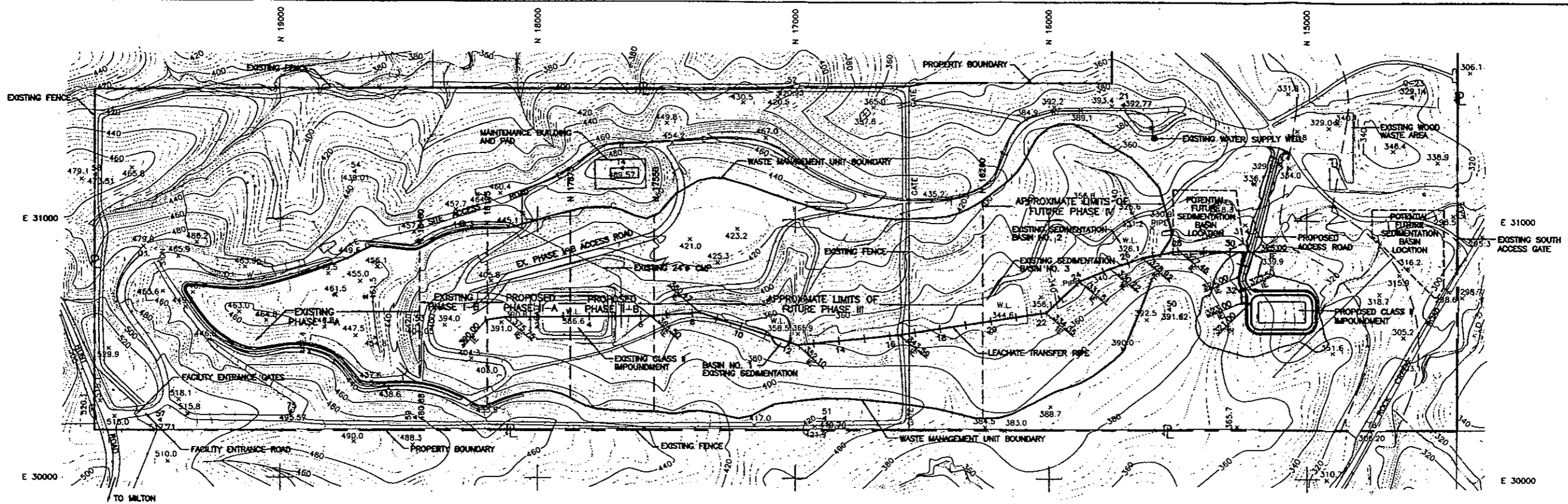
- NOTES:**
- MAXIMUM ANTICIPATED GROUNDWATER ELEVATIONS TO BE VERIFIED PRIOR TO DESIGN FOR CONSTRUCTION. A 5 FOOT MINIMUM SEPARATION WILL BE MAINTAINED BETWEEN MINIMUM WASTE ELEVATIONS AND MAXIMUM ANTICIPATED GROUNDWATER ELEVATIONS.
  - PROVISIONS FOR BIRD PROTECTION TO BE PROPOSED IN DESIGN FOR CONSTRUCTION.
  - PROVISIONS FOR ENHANCED RATE OF LEACHATE EVAPORATION TO BE PROPOSED IN DESIGN FOR CONSTRUCTION.

**LEGEND**

△ L-10 PROPOSED LYSIMETER LOCATION

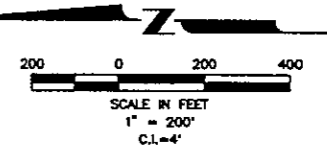


**95 PERCENT SUBMITTAL**  
**NOT FOR CONSTRUCTION**  
DATE: 03-10-95

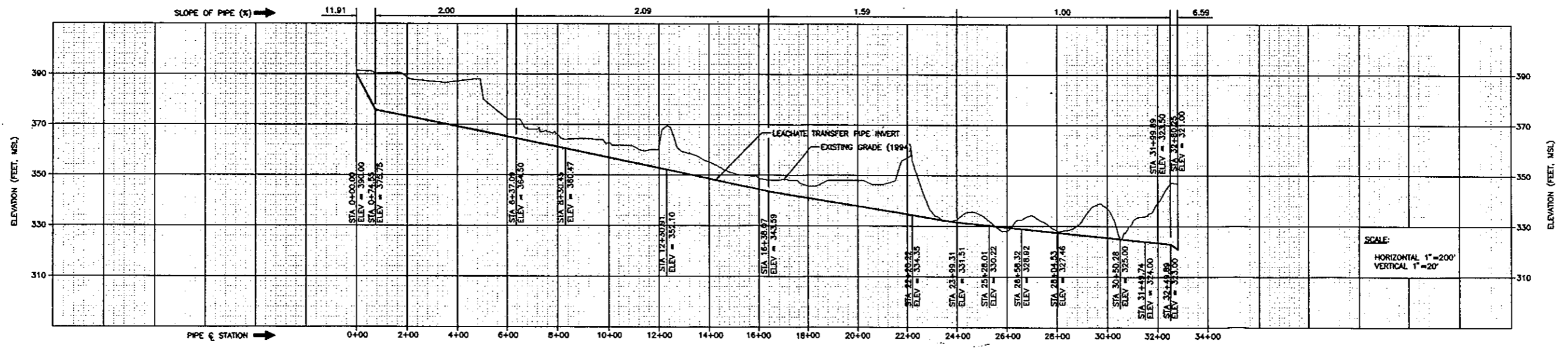


LEACHATE TRANSFER PIPE PLAN

- SITE PLAN LEGEND**
- PROPERTY BOUNDARY
  - APPROXIMATE WASTE MANAGEMENT UNIT BOUNDARY
  - APPROXIMATE LOCATION OF EXISTING ELECTRICAL LINE
  - APPROXIMATE LOCATION OF EXISTING WATER LINE



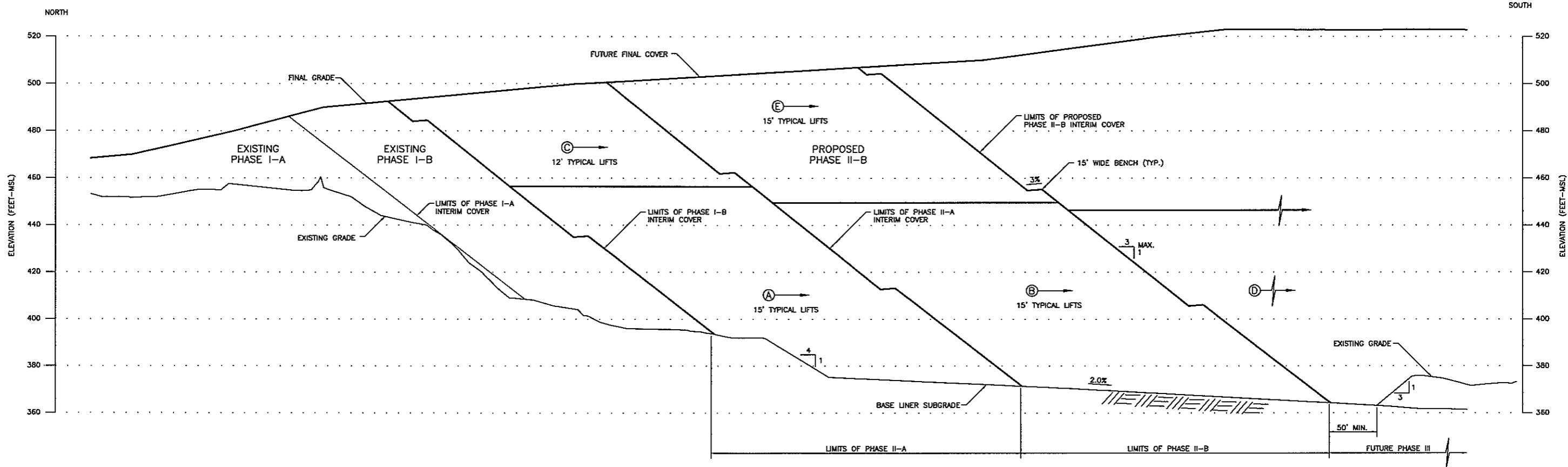
**95 PERCENT SUBMITTAL  
NOT FOR CONSTRUCTION  
DATE: 03-10-95**



LEACHATE TRANSFER PIPE PROFILE

	DRAWN: RLH,MAE	PROJECT NO.: 28018.2	FILE NAME: ROCKLCS.DWG	<p><b>Harding Lawson Associates</b> Engineering and Environmental Services 3247 Ramon Circle Sacramento, California 95827 (916) 364-0793</p>	<p><b>ROCK CREEK SOLID WASTE FACILITY FACILITY DEVELOPMENT PLAN</b></p> <p>CALAVERAS COUNTY DEPARTMENT OF PUBLIC WORKS 891 MOUNTAIN RANCH ROAD SAN ANDREAS, CALIFORNIA 95248</p>	<p><b>LEACHATE TRANSFER PIPE PLAN AND PROFILE</b></p>	DRAWING: C9
	ENGINEER: RAW	SCALE: AS SHOWN			SHEET: 9 of 17		
	CHECKED: GSL	APPROVED:			REVISION NUMBER:		
NO. DATE	REVISIONS	BY	CHK		DATE: 03-10-95	DATE:	





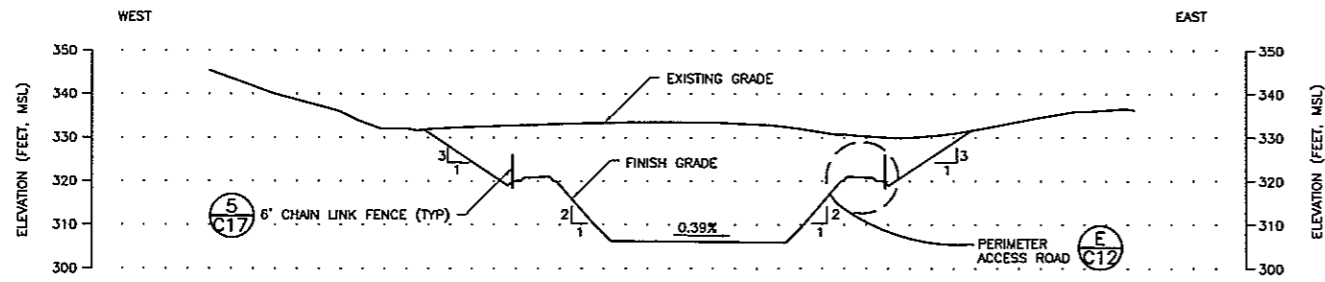
SECTION **B**  
 SCALE: HORIZONTAL 1"=50'  
 VERTICAL 1"=20'  
 C11

**NOTE:**  
 1. PHASE II-A WILL BE CONSTRUCTED AND MAY BE OPERATED PRIOR TO PHASE I-B REACHING CAPACITY. PHASE II-A WILL BE PARTIALLY FILLED AND THEN OPERATIONS WILL PROCEED TO PHASE II-B. THE PARTIALLY FILLED PHASE II-B WILL PROVIDE A BUTTRESS FOR STABLE LANDFILLING OF PHASE I-A TO CAPACITY. PHASE III WILL BE CONSTRUCTED AND BEGIN OPERATION WHEN PHASE II-B IS PARTIALLY FILLED. THE PARTIALLY FILLED PHASE III WILL PROVIDE A BUTTRESS FOR STABLE LANDFILLING OF PHASE II-B TO CAPACITY.

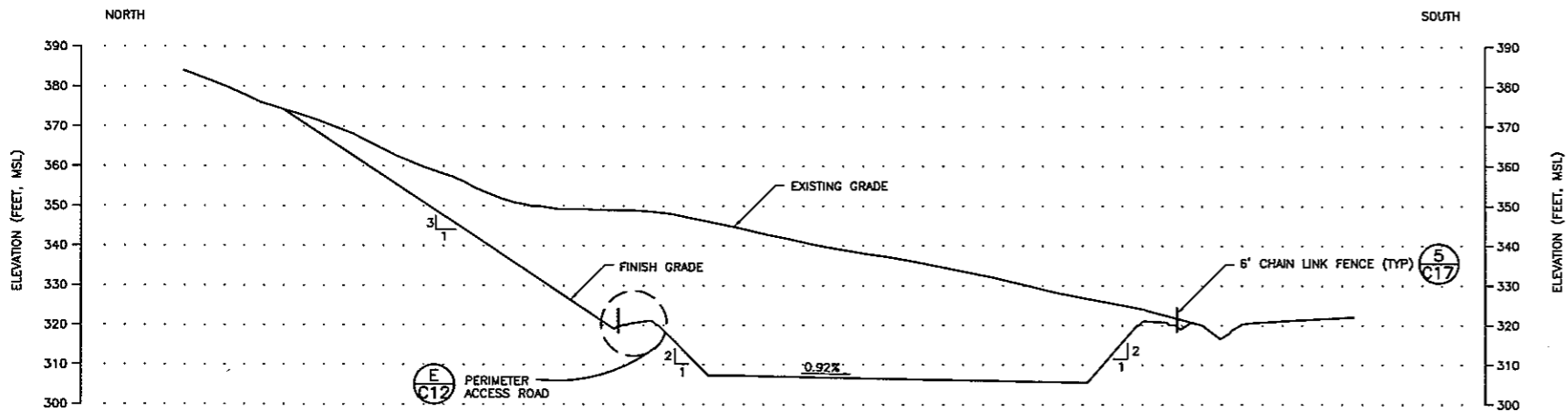
**LEGEND**  
 (B) → FILL SEQUENCING AND GENERAL DIRECTION OF FILL

95 PERCENT SUBMITTAL  
 NOT FOR CONSTRUCTION  
 DATE: 03-10-95

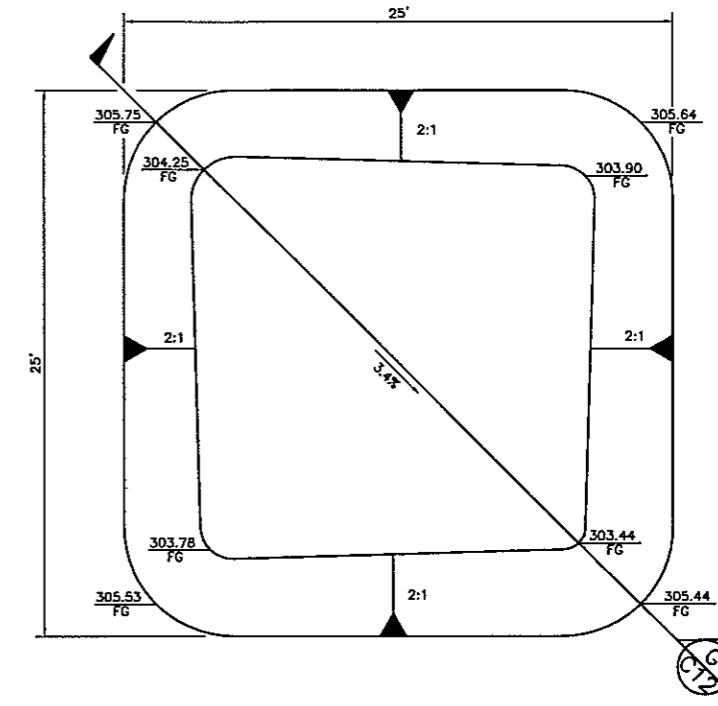
DRAWN: MAE,RLH		PROJECT NO.: 28018.2	FILE NAME: ROCKFILL.DWG	<p>Harding Lawson Associates          Engineering and Environmental Services          3247 Ramos Circle          Sacramento, California 95827          (916) 364-0793</p>	<p>ROCK CREEK SOLID WASTE FACILITY          FACILITY DEVELOPMENT PLAN</p> <p>CALAVERAS COUNTY          DEPARTMENT OF PUBLIC WORKS          891 MOUNTAIN RANCH ROAD          SAN ANDREAS, CALIFORNIA 95249</p>	<p>FILL SEQUENCING PLAN          PHASE II</p>	DRAWING: C11
ENGINEER: RAW		SCALE: AS SHOWN					SHEET: 11 OF 17
CHECKED: GSL		APPROVED:					REVISION NUMBER:
NO.	DATE	REVISIONS	BY				CHK
					03-10-95		



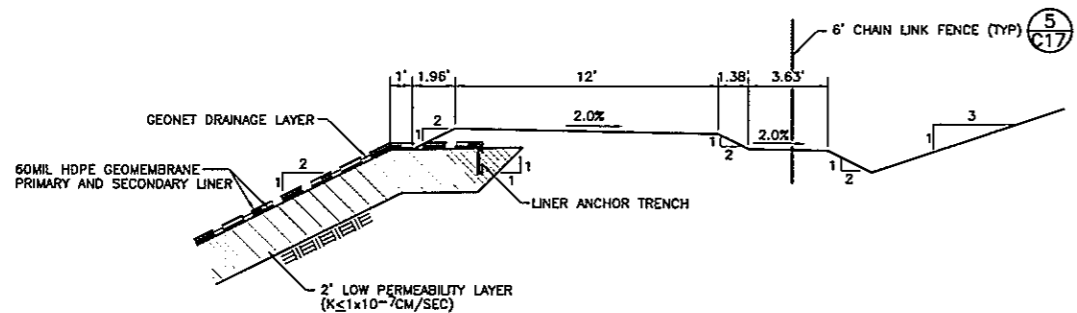
SECTION C  
SCALE: HORIZ: 1"=40'  
VERT: 1"=20'



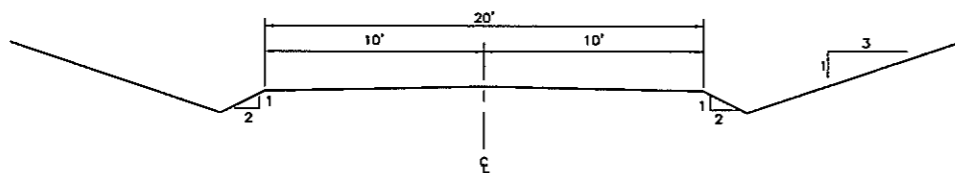
SECTION D  
SCALE: HORIZ: 1"=40'  
VERT: 1"=20'



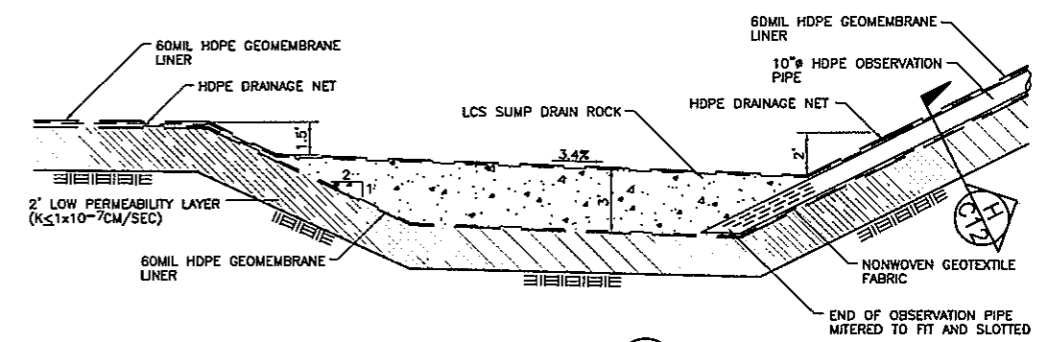
PLAN  
SCALE: 1"=4'



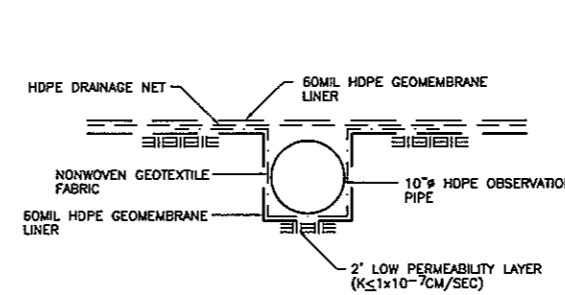
PERIMETER ACCESS ROAD E  
SCALE: 1"=4'



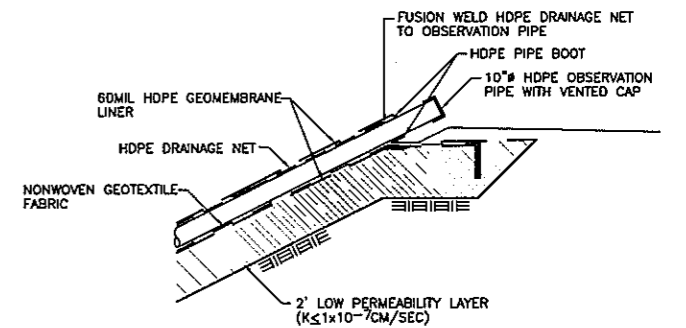
ACCESS ROAD F  
SCALE: 1"=4'



SECTION G  
SCALE: 1"=4'



SECTION H  
SCALE: 1"=1'



SECTION J  
SCALE: 1"=4'

LCS SUMP K  
SCALE: 1"=4'

ND.	DATE	REVISIONS	BY	CHK

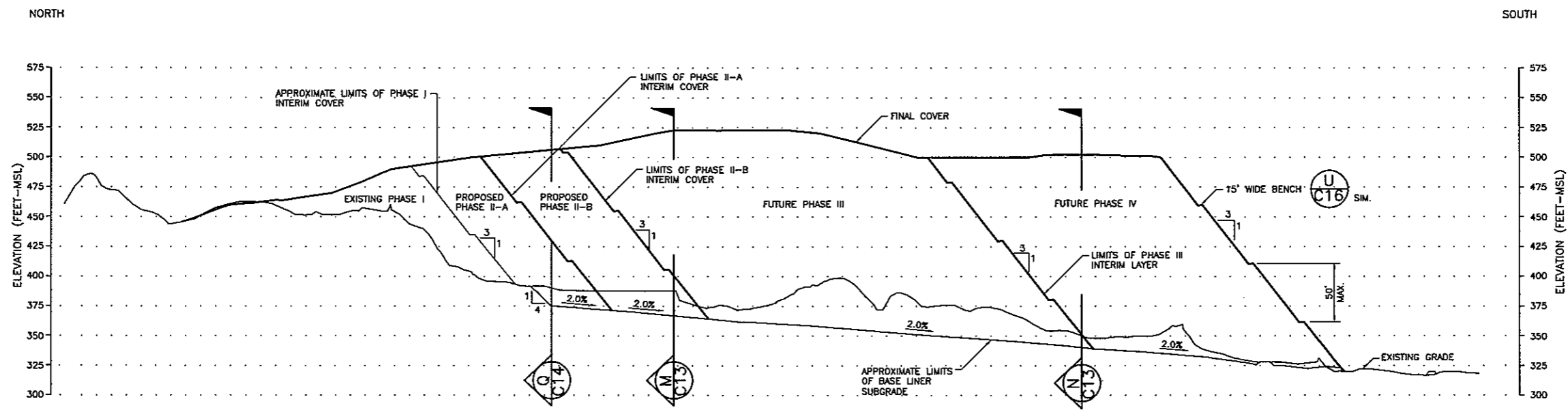
DRAWN: MAE PROJECT NO.: 28018.2 FILE NAME: PONDSEC.DWG  
 ENGINEER: RAW SCALE: AS SHOWN  
 CHECKED: GSL APPROVED:  
 DATE: 03-10-95 DATE:

Harding Lawson Associates  
 Engineering and Environmental Services  
 3247 Roma Circle  
 Sacramento, California 95827  
 (916) 364-0793

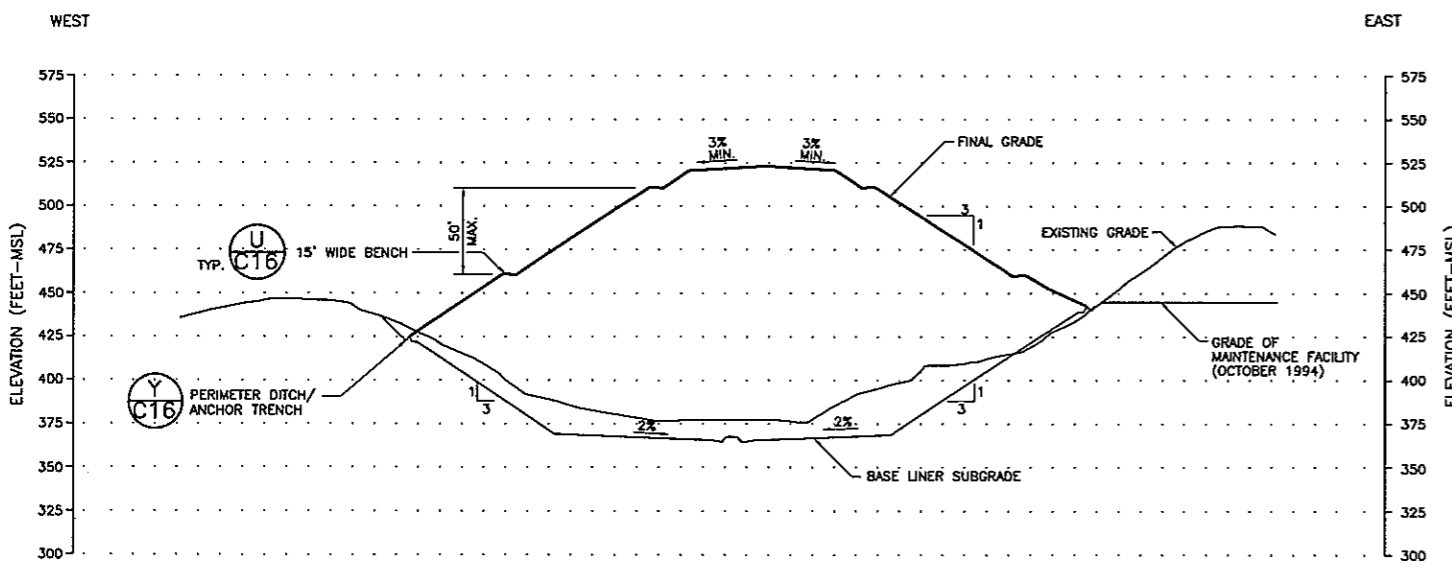
ROCK CREEK SOLID WASTE FACILITY  
 1994 FACILITY DEVELOPMENT PLAN  
 CALAVERAS COUNTY  
 DEPARTMENT OF PUBLIC WORKS  
 B91 MOUNTAIN RANCH ROAD  
 SAN ANDREAS, CALIFORNIA 95249

DRAWING: C12  
 SHEET: 12 OF 17  
 REVISION NUMBER:  
 DATE:

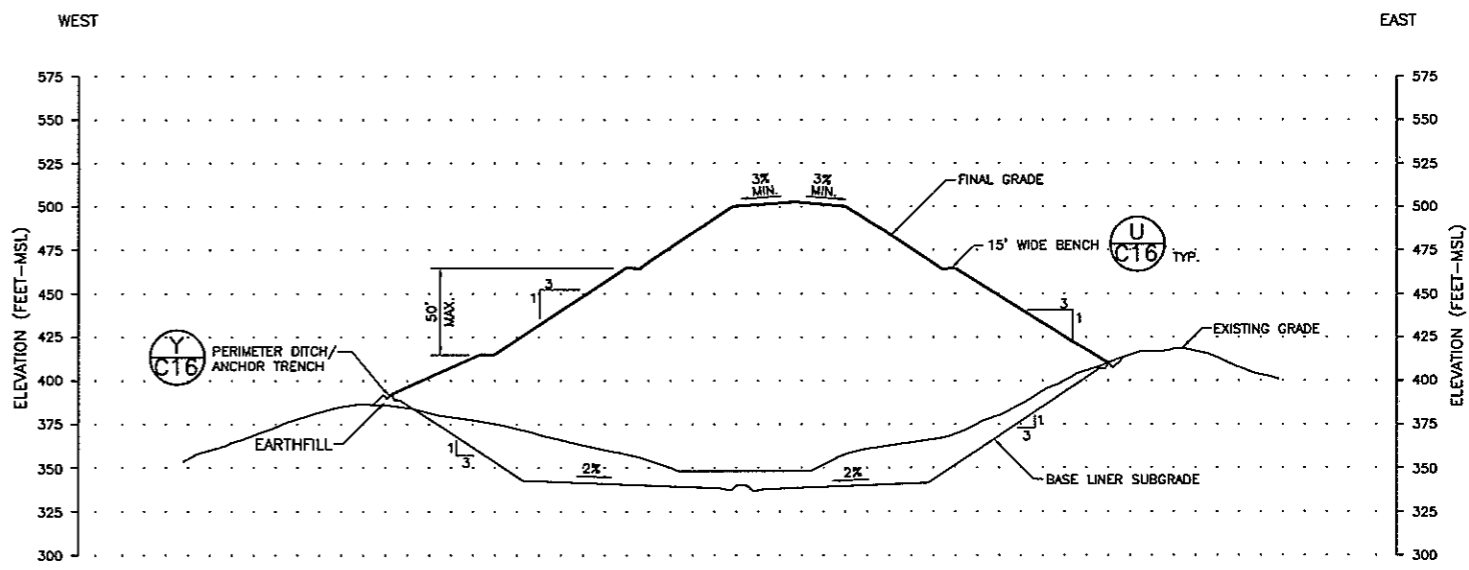
CLASS II IMPOUNDMENT  
 SECTIONS AND DETAILS



SECTION L  
SCALE: HORIZONTAL 1"=200'  
VERTICAL 1"=50'



SECTION N17670.00 M  
SCALE: HORIZONTAL 1"=100'  
VERTICAL 1"=50'

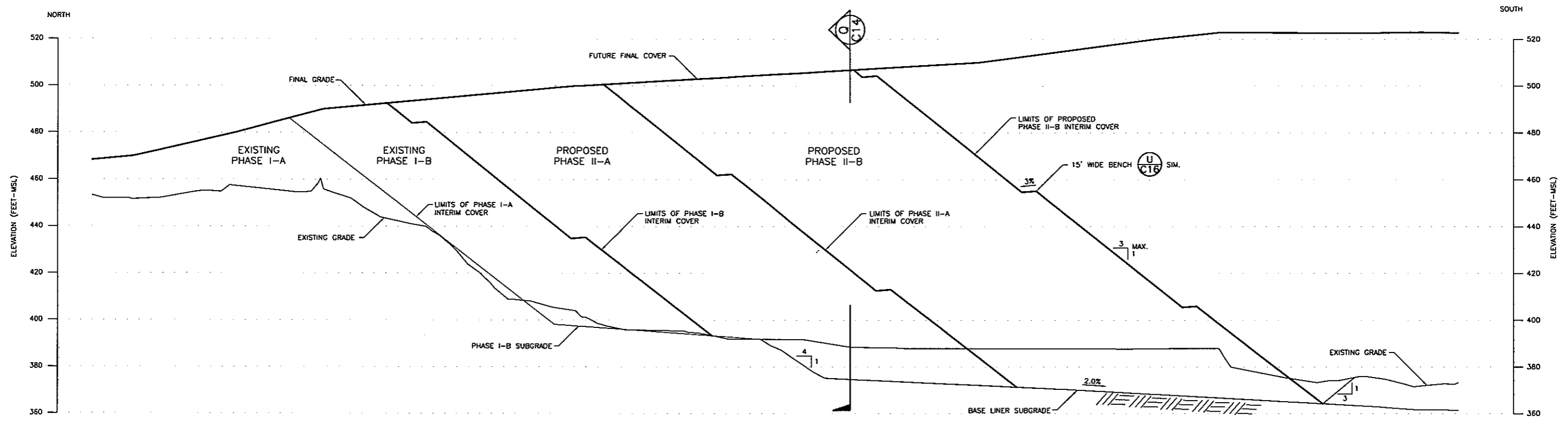


SECTION N16300.00 N  
SCALE: HORIZONTAL 1"=100'  
VERTICAL 1"=50'

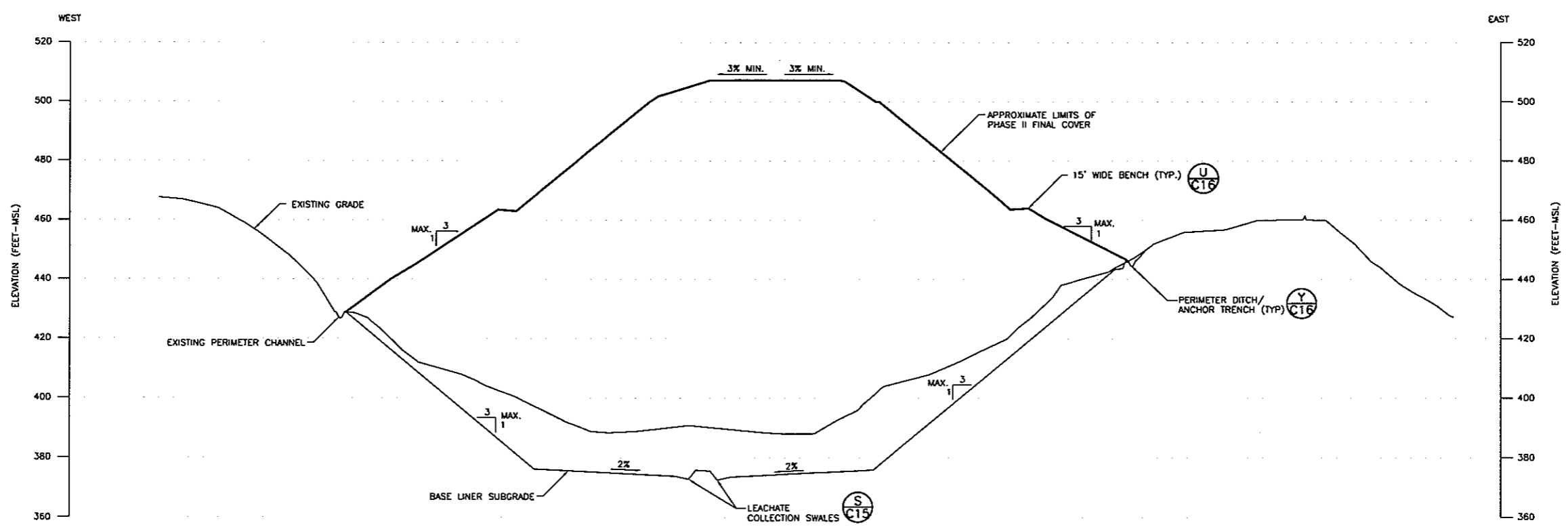
95 PERCENT SUBMITTAL  
NOT FOR CONSTRUCTION  
DATE: 03-10-95

NO.		DATE		REVISIONS		BY	CHK	DRAWN: RLH ENGINEER: RAW CHECKED: GSL DATE: 03-10-95	PROJECT NO.: 28018.2 SCALE: AS SHOWN APPROVED: DATE:	FILE NAME: ROCKXSEC.DWG HARDING LAWSON ASSOCIATES Engineering and Environmental Services 3247 Ramos Circle Sacramento, California 95827 (916) 364-0793	ROCK CREEK SOLID WASTE FACILITY FACILITY DEVELOPMENT PLAN CALAVERAS COUNTY DEPARTMENT OF PUBLIC WORKS 891 MOUNTAIN RANCH ROAD SAN ANDREAS, CALIFORNIA 95249	DRAWING: C13 SHEET: 13 OF 17 REVISION NUMBER: DATE:
-----	--	------	--	-----------	--	----	-----	---	---	---	--	--

CROSS SECTIONS



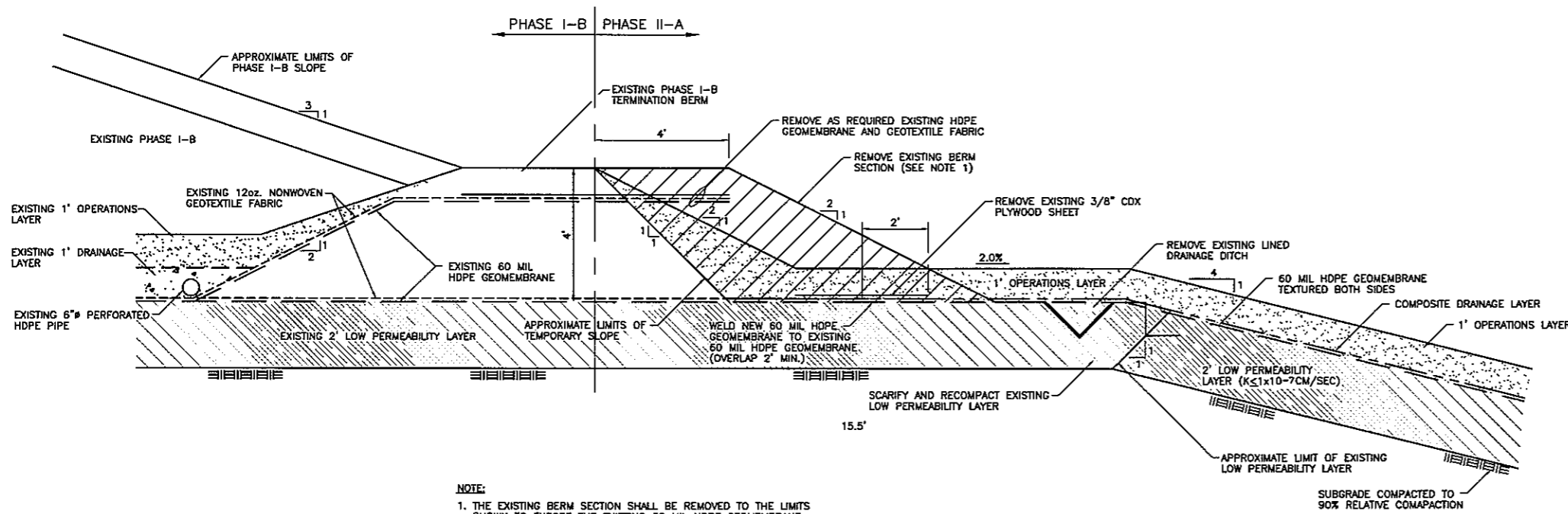
SECTION P  
 SCALE: HORIZONTAL 1"=50'  
 VERTICAL 1"=20'



SECTION N 18080.00  
 SCALE: HORIZONTAL 1"=50'  
 VERTICAL 1"=20'

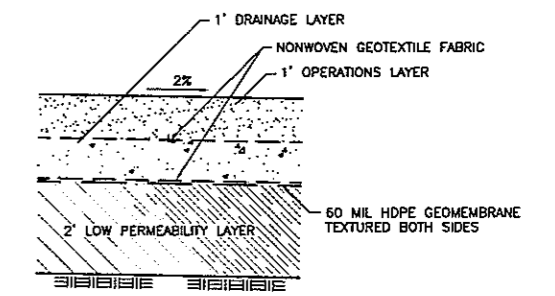
95 PERCENT SUBMITTAL  
 NOT FOR CONSTRUCTION  
 DATE: 03-10-95

NO.		DATE		REVISIONS		BY	CHK	DATE	03-10-95		
DRAWN:		MAE.RLH		PROJECT NO.:		2801B.2		FILE NAME:		PH2XSEC.DWG	
ENGINEER:		RAW		SCALE:		AS SHOWN		HARDING LAWSON ASSOCIATES		Engineering and Environmental Services	
CHECKED:		GSL		APPROVED:				3247 Ramos Circle		Sacramento, California 95827	
DATE:		03-10-95		DATE:				(916) 364-0793		ROCK CREEK SOLID WASTE FACILITY FACILITY DEVELOPMENT PLAN	
						CALAVERAS COUNTY DEPARTMENT OF PUBLIC WORKS 891 MOUNTAIN RANCH ROAD SAN ANDREAS, CALIFORNIA 95249					
						CROSS SECTIONS PHASE II					
						DRAWING: C14					
						SHEET: 14 of 17					
						REVISION NUMBER:					
						DATE:					

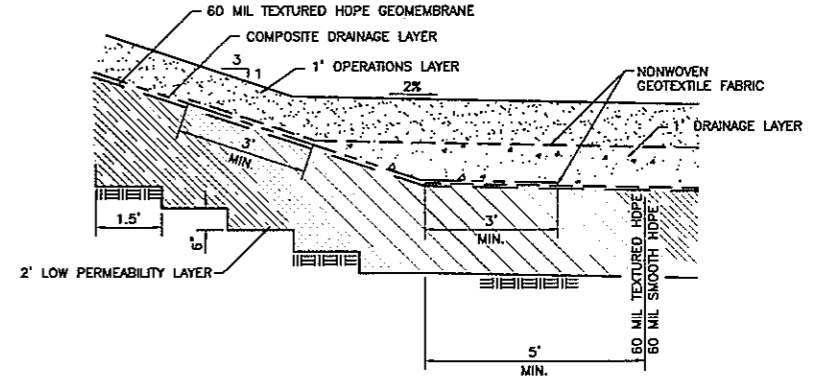


NOTE:  
1. THE EXISTING BERM SECTION SHALL BE REMOVED TO THE LIMITS SHOWN TO EXPOSE THE EXISTING 60 MIL HDPE GEOMEMBRANE.

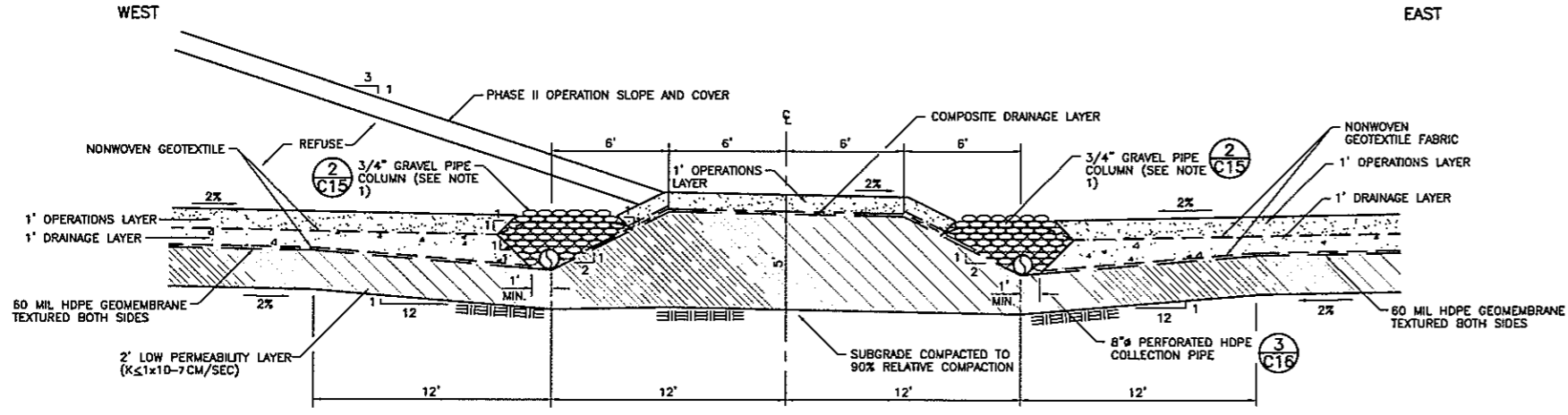
**BASE LINER TIE-IN (R)**  
SCALE: 1" = 2' (C15)



**BASE SLOPE LINER (1)**  
SCALE: 1" = 2' (C15)

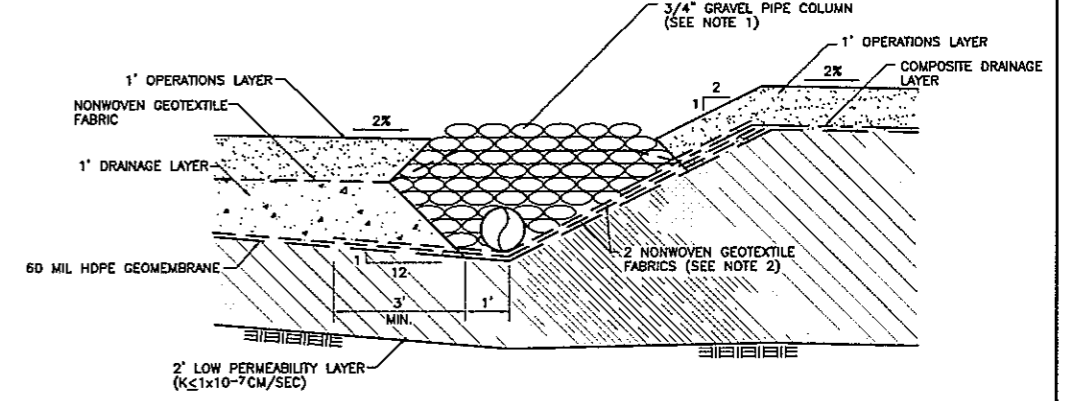


**SIDE SLOPES LINER (T)**  
SCALE: 1" = 5' (C15)



NOTE:  
1. SEE DETAIL 2/C13 FOR LINER PLACEMENT AND GRAVEL PIPE COLUMN.

**TYPICAL LEACHATE COLLECTION SWALE (S)**  
SCALE: 1" = 4' (C15)

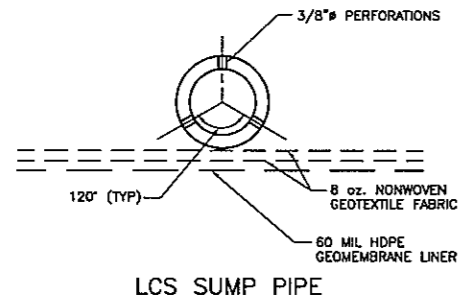


NOTES:  
1. THE GRAVEL PIPE COLUMN SHALL EXTEND ABOVE THE OPERATIONS LAYER A MINIMUM OF ONE INCH.  
2. EXTEND THE 2 NONWOVEN GEOTEXTILE FABRIC A MINIMUM OF THREE FEET BEYOND GRAVEL PIPE COLUMN.

**PIPE COLUMN/COLLECTION SWALE (2)**  
SCALE: 1" = 2' (C15)

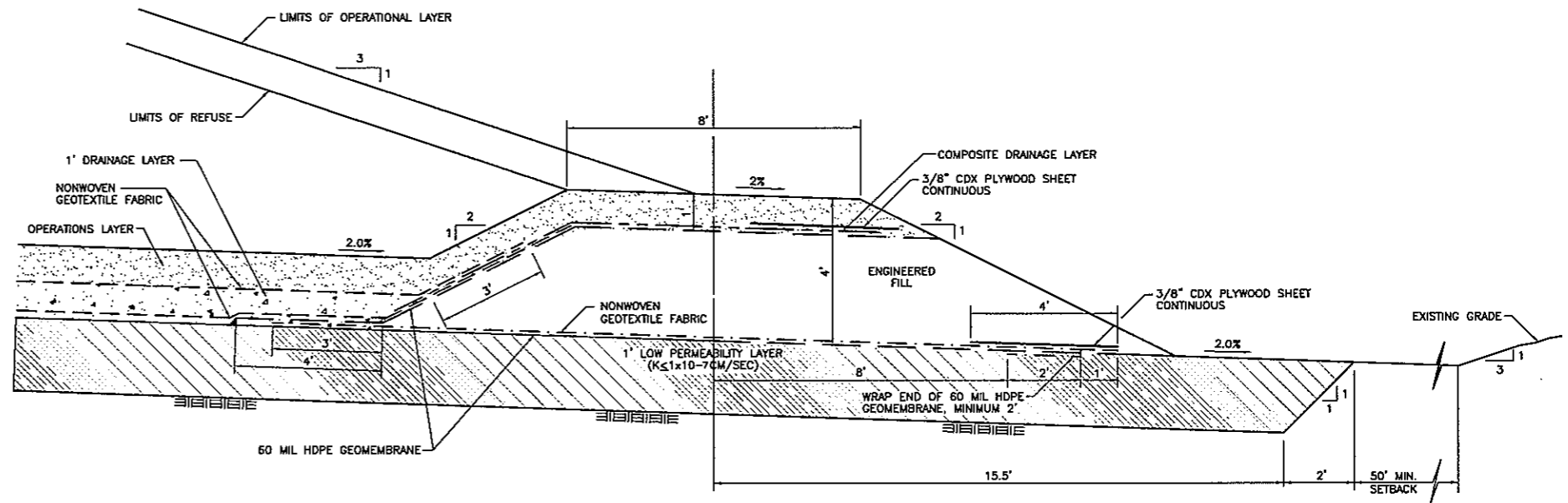
**95 PERCENT SUBMITTAL  
NOT FOR CONSTRUCTION  
DATE: 03-10-95**

DRAWN: RLH		PROJECT NO.: 28018.2	FILE NAME: ROCKDET1.DWG	<p>Harding Lawson Associates Engineering and Environmental Services 3247 Ramona Circle Sacramento, California 95827 (916) 364-0793</p>	<p><b>ROCK CREEK SOLID WASTE FACILITY FACILITY DEVELOPMENT PLAN</b></p> <p>CALAVERAS COUNTY DEPARTMENT OF PUBLIC WORKS 891 MOUNTAIN RANCH ROAD SAN ANDREAS, CALIFORNIA 95249</p>	<p><b>SECTIONS AND DETAILS</b></p>	DRAWING: C15
ENGINEER: RAW		SCALE: AS SHOWN					SHEET: 15 OF 17
CHECKED: GSL		APPROVED:					REVISION NUMBER:
NO.	DATE	REVISIONS	BY				CHK

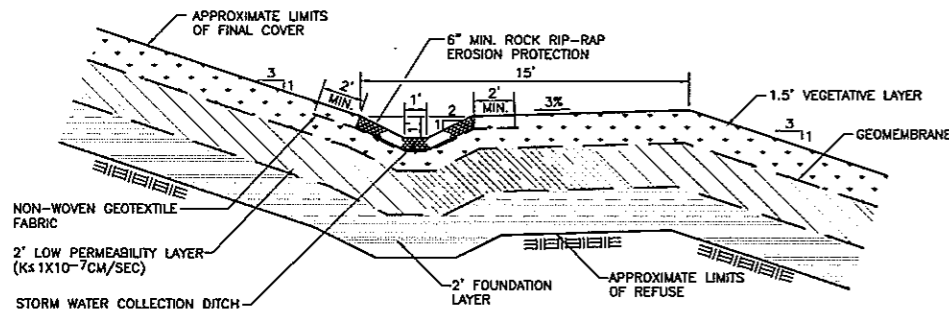


1. LCS SUMP PIPE SHALL HAVE 3/8" PERFORATIONS AT 1/3 POINTS SPACED AT 5' CENTER TO CENTER.

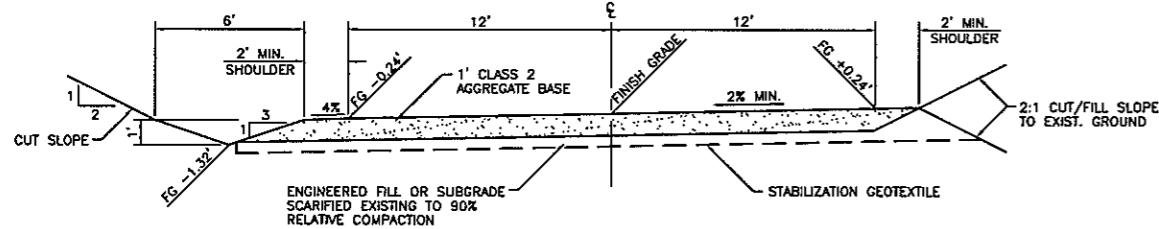
PIPE PERFORATION DETAIL **3**  
N.T.S. **C16**



BASE LINER TERMINATION SECTION **W**  
SCALE: 1"=2' **C16**



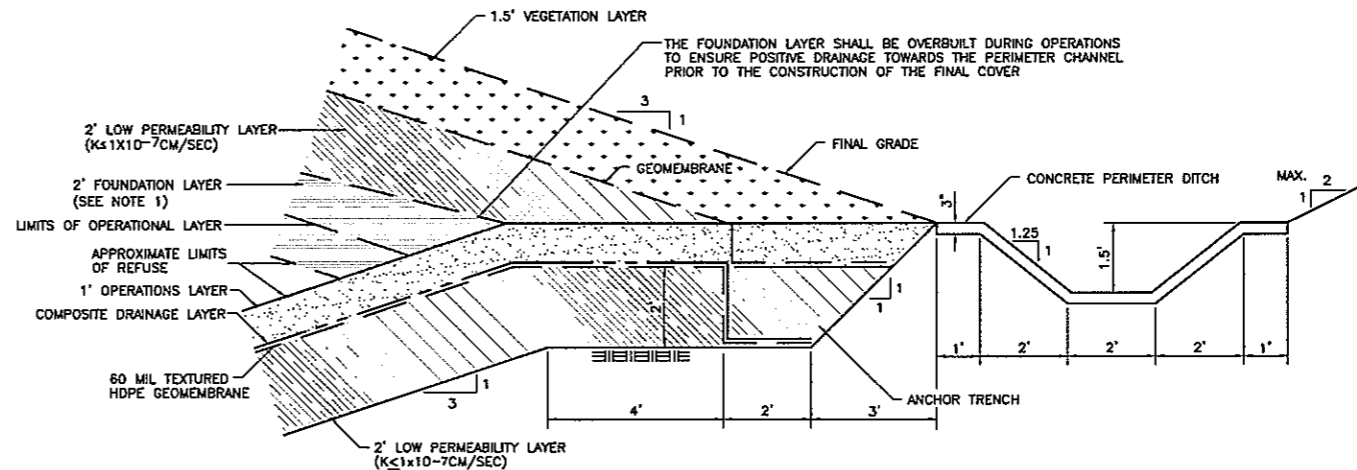
BENCH SECTION **U**  
SCALE: 1"=4' **C16**



NOTES:

1. MAXIMUM GRADE FOR THE ACCESS ROAD SHALL NOT EXCEED 10%.
2. THE MINIMUM GRADE FOR THE ACCESS ROAD SHALL NOT BE LESS THAN 0.5%.

ACCESS ROAD PHASE II **V**  
TYPICAL SECTION **C16**  
SCALE: 1"=4'



PERIMETER DITCH/ANCHOR TRENCH SECTION **Y**  
SCALE: 1"=2' **C16**

NOTES:

1. ONE FOOT OF THE FOUNDATION LAYER SHALL BE PLACED AS INTERIM COVER AND THE REMAINING ONE FOOT PLACED AS FINAL COVER.
2. THE FINAL COVER WILL NOT BE CONSTRUCTED AS PART OF THE PHASE II LANDFILL CONSTRUCTION.
3. THE BASE LINER ANCHOR TRENCH SHALL BE PROPERLY MARKED FOR PROTECTION DURING FUTURE CONSTRUCTION.
4. THE FINAL COVER STABILITY TO BE ANALYZED DURING DESIGN FOR FINAL COVER CONSTRUCTION. A DRAINAGE LAYER MAY BE REQUIRED OVER THE GEOMEMBRANE OR WITHIN THE VEGETATION LAYER.

95 PERCENT SUBMITTAL  
NOT FOR CONSTRUCTION  
DATE: 03-10-95

NO.	DATE	REVISIONS	BY	CHK

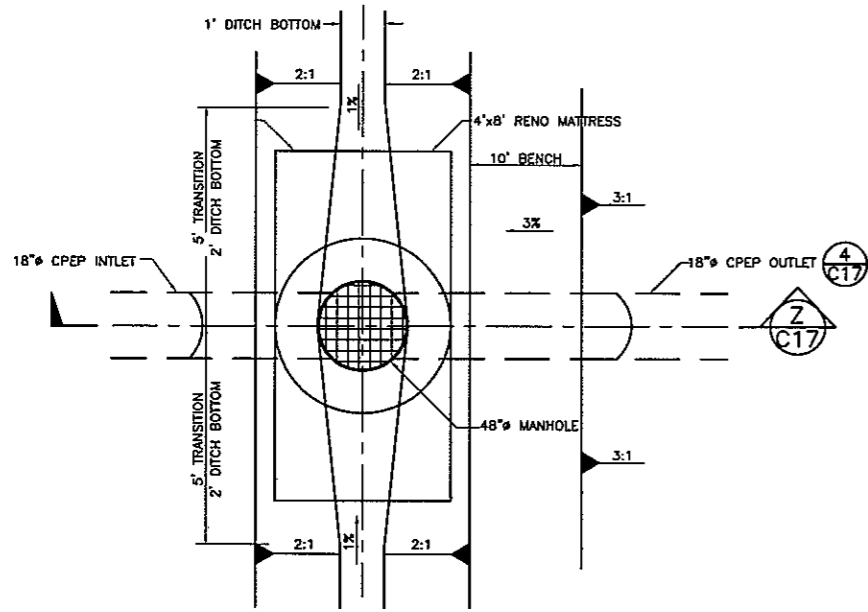
DRAWN: RLH	PROJECT NO.: 28018.2	FILE NAME: ROCKDET2.DWG
ENGINEER: RAW	SCALE: AS SHOWN	
CHECKED: GSL	APPROVED:	
DATE: 03-10-95	DATE:	

Harding Lawson Associates  
Engineering and Environmental Services  
3247 Ramos Circle  
Sacramento, California 95827  
(916) 354-0793

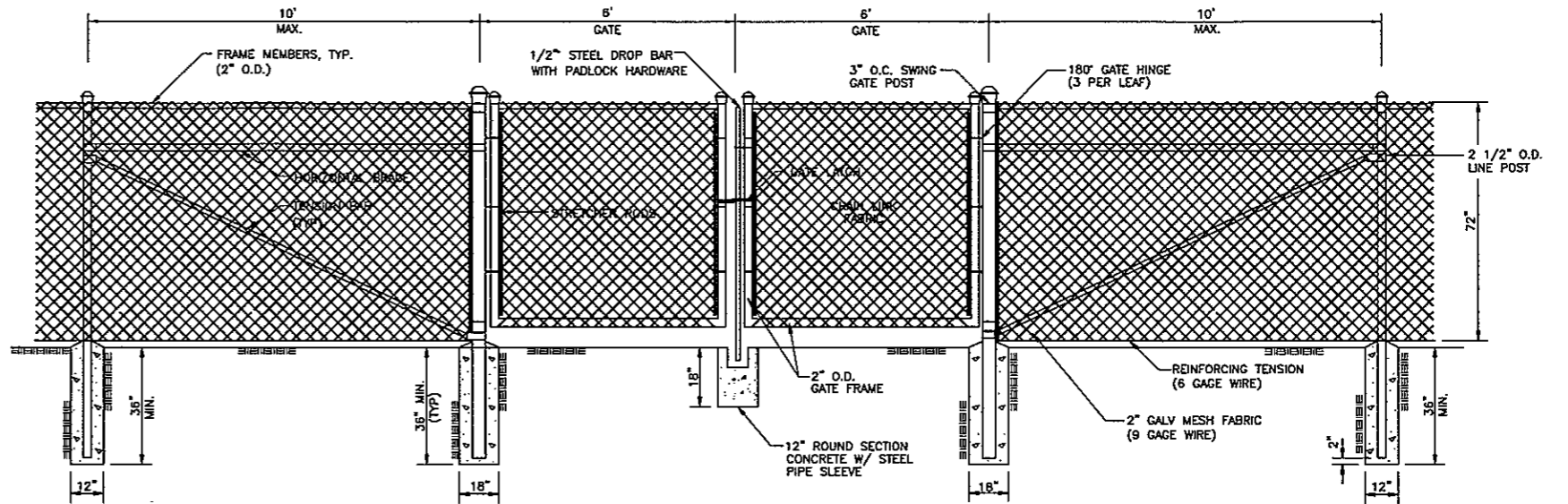
ROCK CREEK SOLID WASTE FACILITY  
FACILITY DEVELOPMENT PLAN  
CALAVERAS COUNTY  
DEPARTMENT OF PUBLIC WORKS  
891 MOUNTAIN RANCH ROAD  
SAN ANDREAS, CALIFORNIA 95249

SECTIONS AND DETAILS

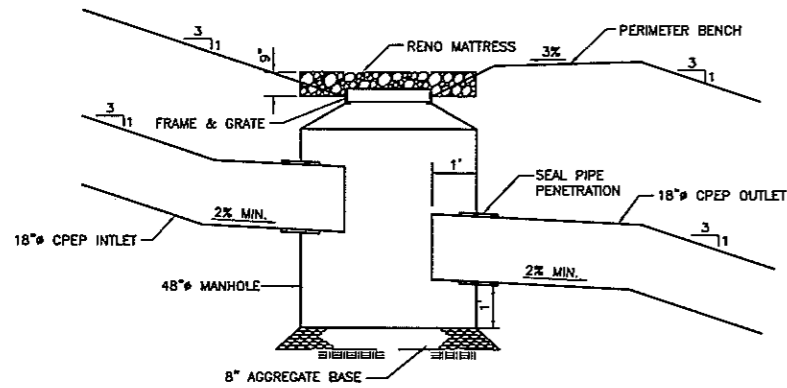
DRAWING: C16
SHEET: 16 OF 17
REVISION NUMBER:
DATE:



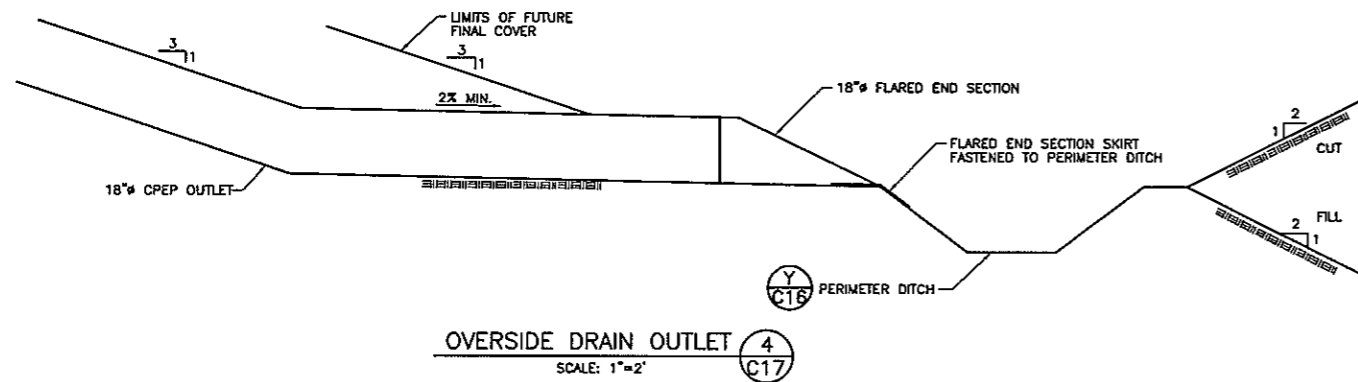
PLAN VIEW



FENCE AND GATE DETAIL 5  
SCALE: 1"=2' C17



OVERSIDE DRAIN INLET 2  
SCALE: 1"=2' C17



OVERSIDE DRAIN OUTLET 4  
SCALE: 1"=2' C17

XX PERCENT SUBMITTAL  
NOT FOR CONSTRUCTION  
DATE: 03-10-95

NO.	DATE	REVISIONS	BY	CHK	DATE	DATE
					03-10-95	

DRAWN:	MAE	PROJECT NO.:	28018.2	FILE NAME:	ROCKDET3.DWG
ENGINEER:	RAW	SCALE:		AS SHOWN	
CHECKED:	GSL	APPROVED:			



Harding Lawson Associates  
Engineering and Environmental Services  
3247 Ramon Circle  
Sacramento, California 95827  
(916) 364-0793

ROCK CREEK SOLID WASTE FACILITY  
1994 FACILITY DEVELOPMENT PLAN  
CALAVERAS COUNTY  
DEPARTMENT OF PUBLIC WORKS  
891 MOUNTAIN RANCH ROAD  
SAN ANDREAS, CALIFORNIA 95249

SECTIONS AND DETAILS

DRAWING:	C17
SHEET:	17 OF 17
REVISION NUMBER:	
DATE:	