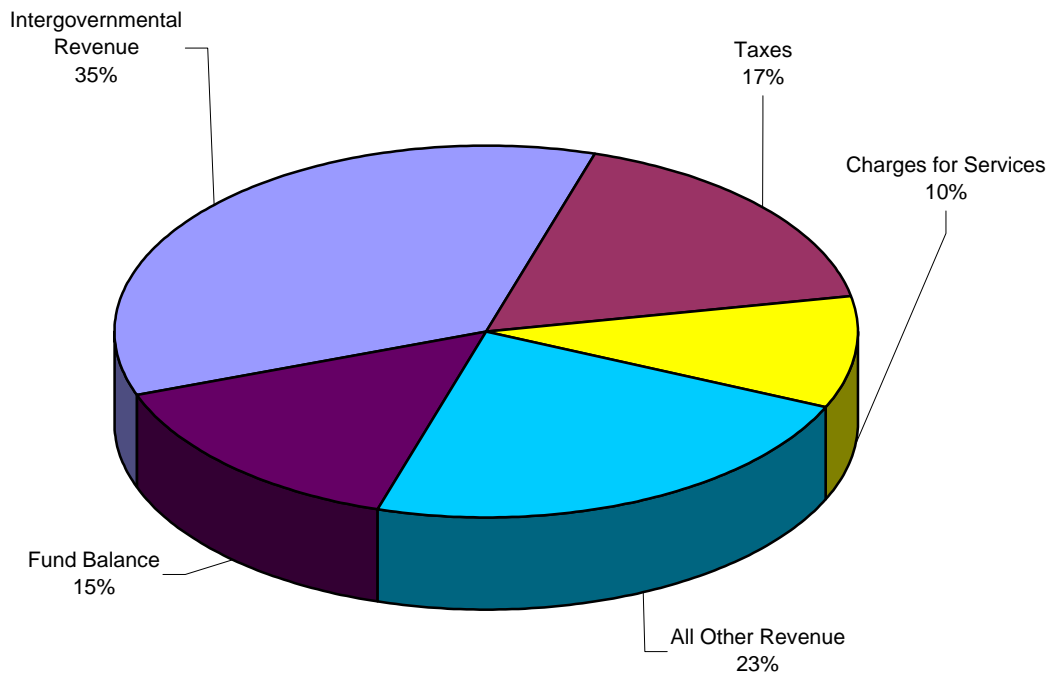
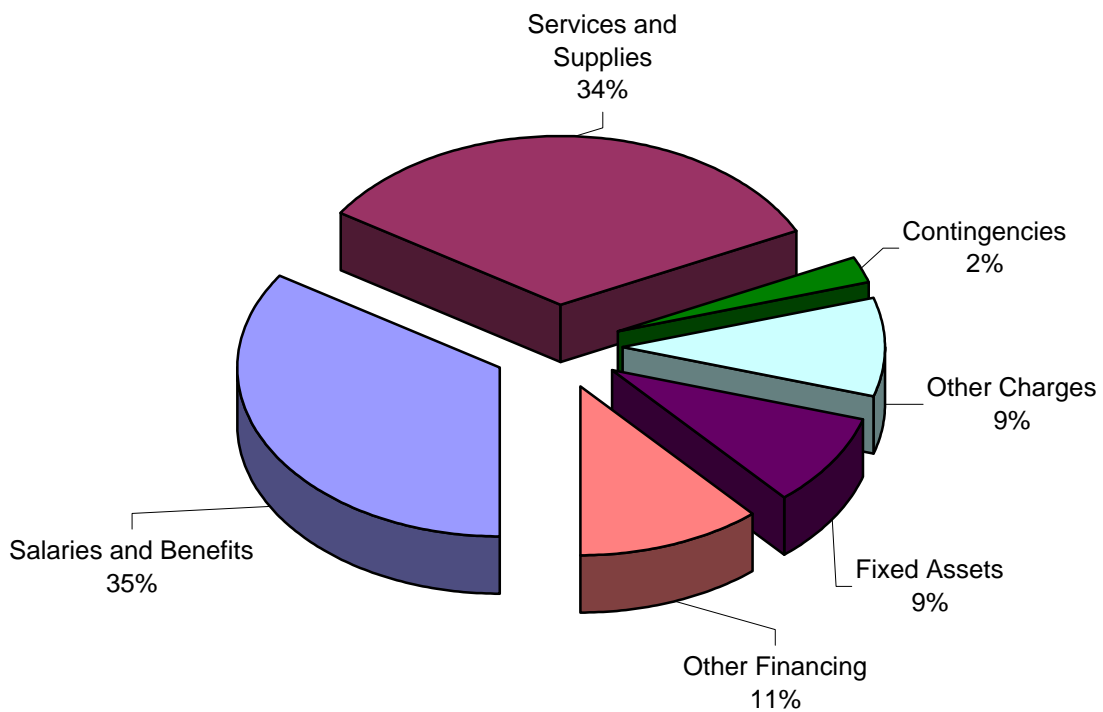


**COUNTY OF CALAVERAS**  
**Summary of Available Financing**  
**Fiscal Year 2005-06**  
**\$96,526,195**



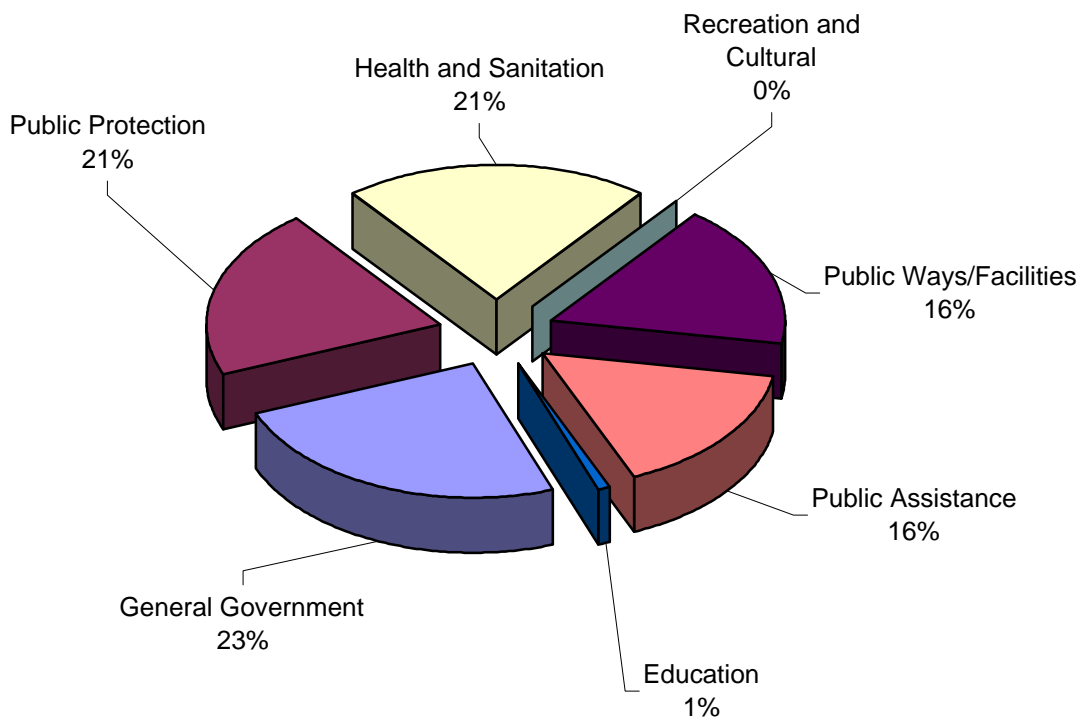
Includes governmental funds only.

**COUNTY OF CALAVERAS**  
**Summary of Budget Requirements**  
**Fiscal Year 2005-06**  
**\$96,526,195**



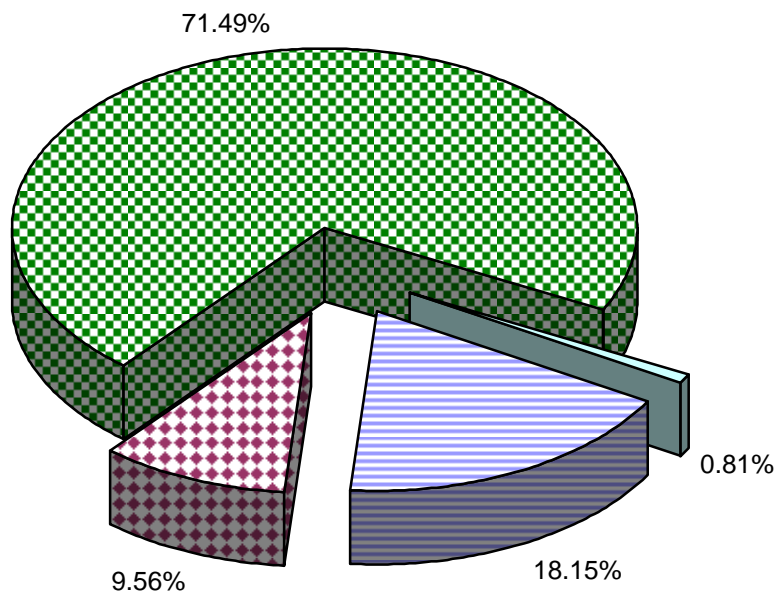
Includes governmental funds only.

# COUNTY OF CALAVERAS Appropriations by Function Fiscal Year 2005-06



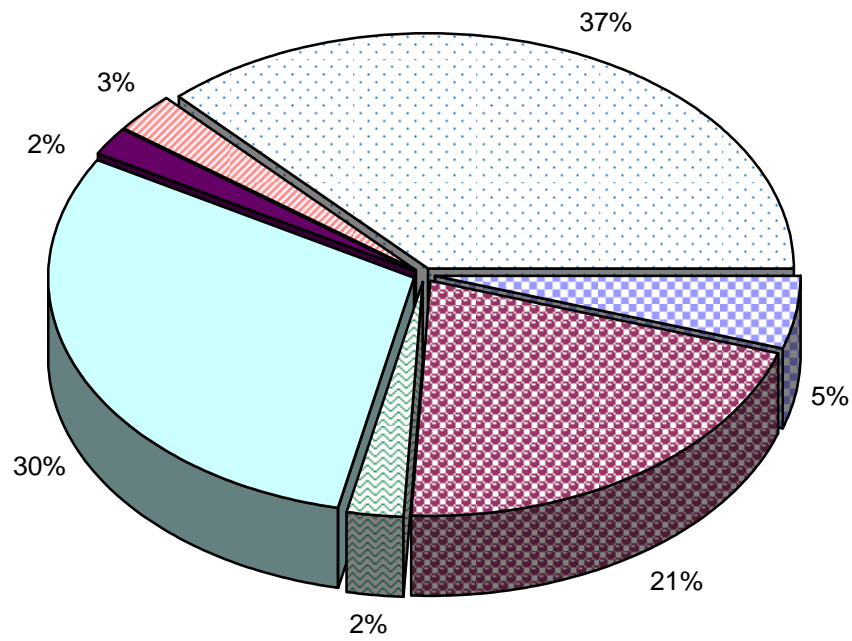
Includes governmental funds only.

**COUNTY OF CALAVERAS**  
**Distribution of Estimated Property Tax**  
**Revenue**  
**Fiscal Year 2005-06**



- County (General, Road, Airport, and County Fire Funds)
- Special Districts
- Schools
- City

# COUNTY OF CALAVERAS General Government Function by Activity Fiscal Year 2005-06

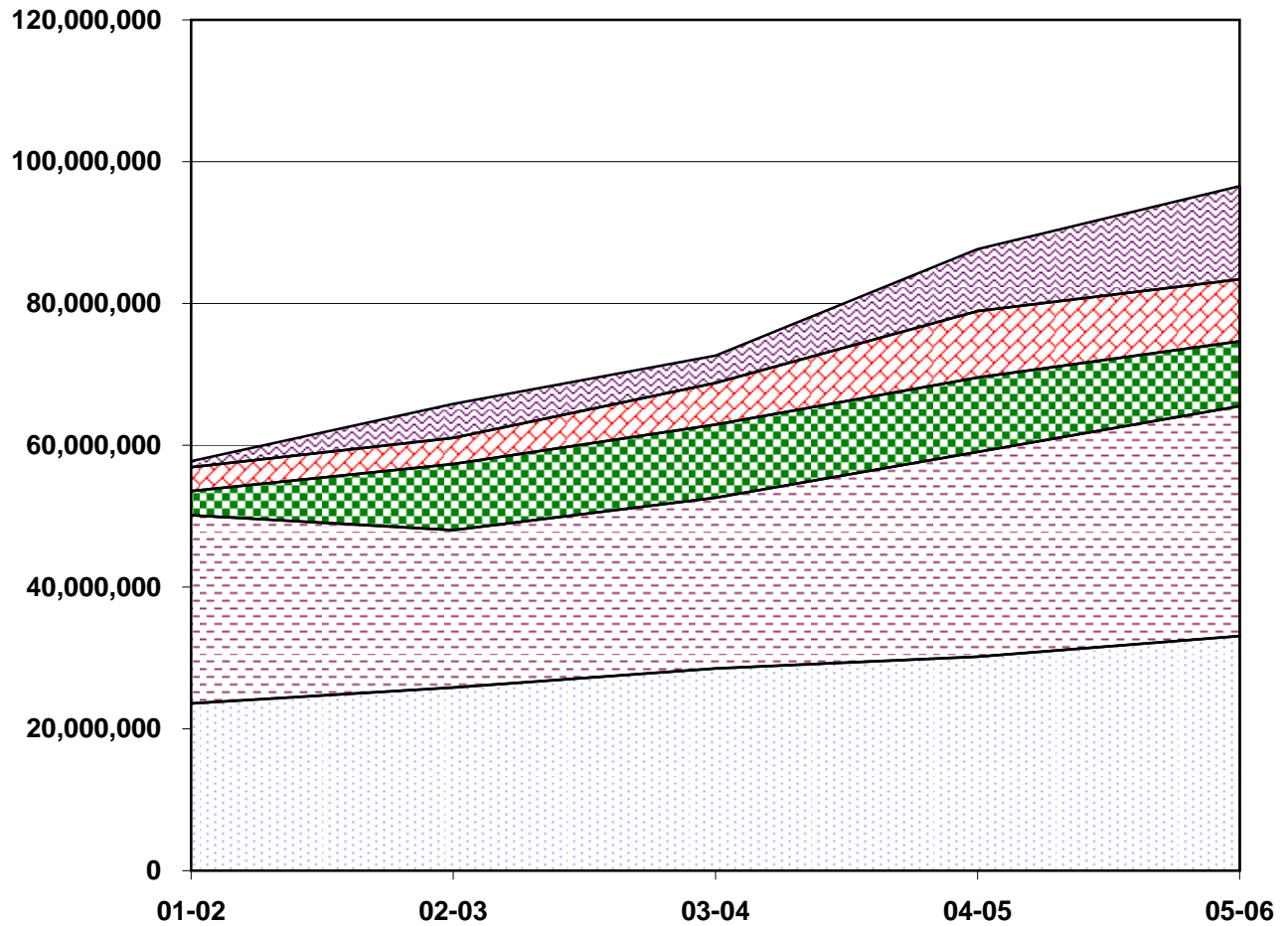


- |                            |                     |
|----------------------------|---------------------|
| Legislative/Administrative | Finance             |
| Counsel                    | Plant Acquisition   |
| Elections                  | Property Management |
| Other General              |                     |

Includes governmental funds only.

1k

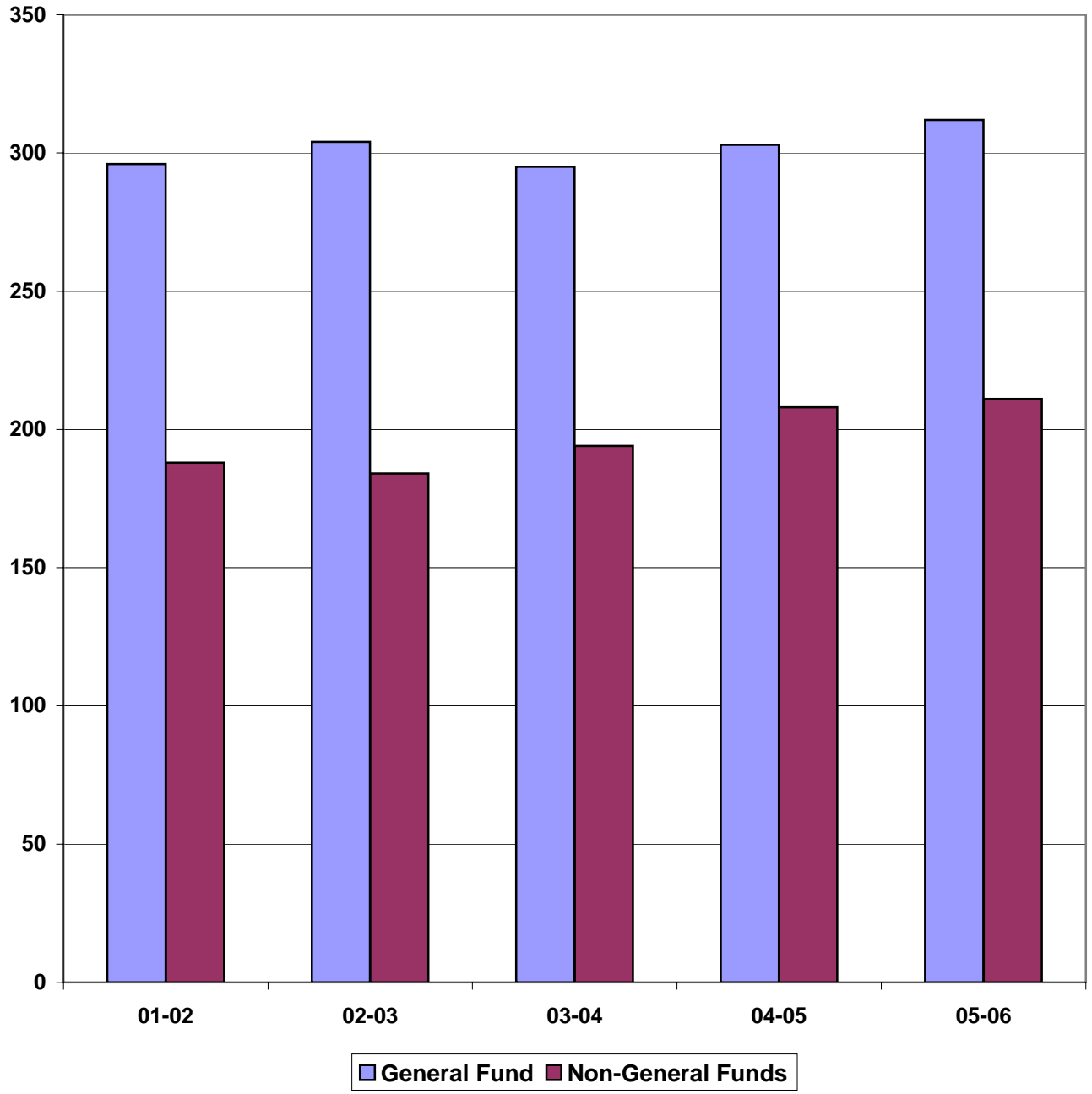
# COUNTY OF CALAVERAS Comparison of Adopted Budget By Class Five Fiscal Years



- Salaries/Benefits
- Services/Supplies
- Other Charges
- Fixed Assets
- Other Financing Uses

Includes governmental funds only.

**COUNTY OF CALAVERAS  
Number of Budgeted County Employees  
(FTEs)  
Five Fiscal Years**



Includes governmental funds only.

1m